

PIELSA[®]

PIELSA[®]

Selene
TEXTILE COLLECTION

Selene
TEXTILE COLLECTION

MADE IN SPAIN

Selene

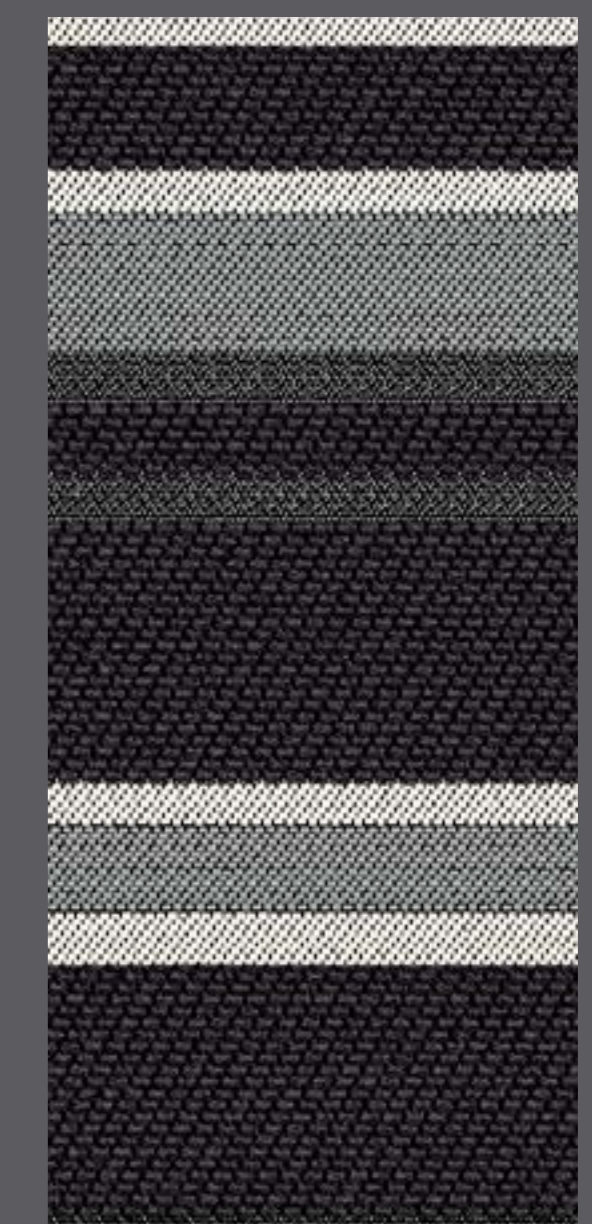




SONOE C 70



ERSA C 72



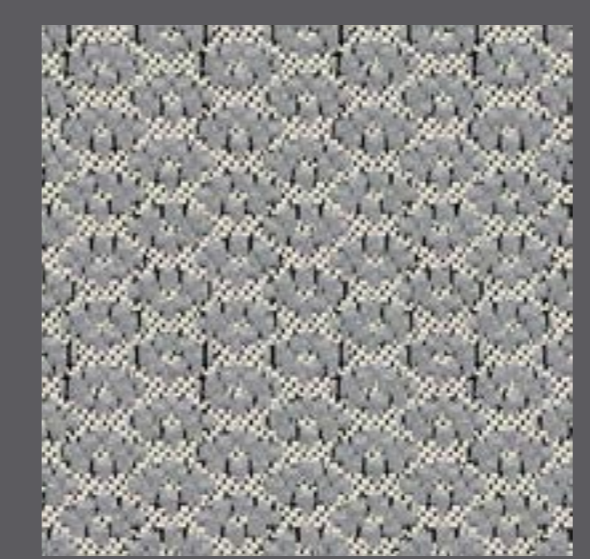
SINOPE C 72



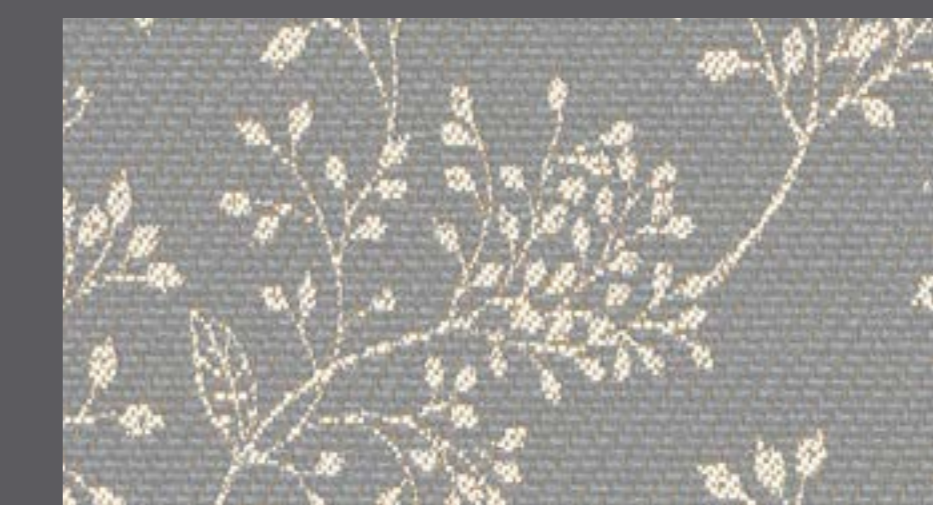
JANO C 70



TIONE C 70



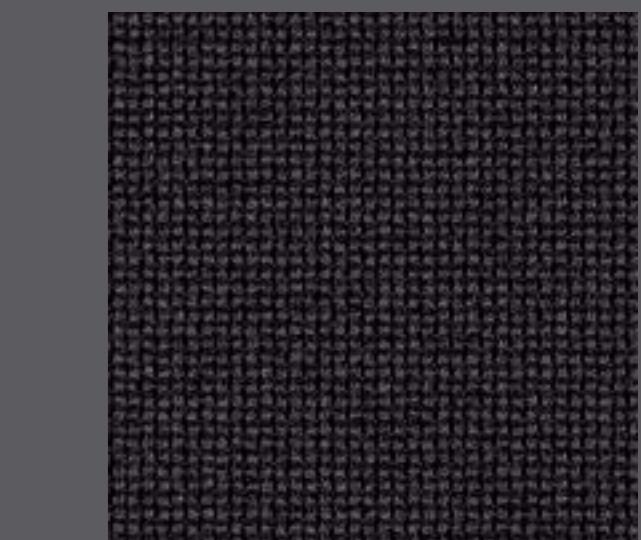
METIS C 70



TEMISTO C 70



ELARA C 70



JANO C 72



ERSA C 70



SINOPE C 70



SONOE C 72



TEMISTO C 72



TIONE C 72



ELARA C 72



METIS C 72



ELARA C 20



TEMISTO C 20



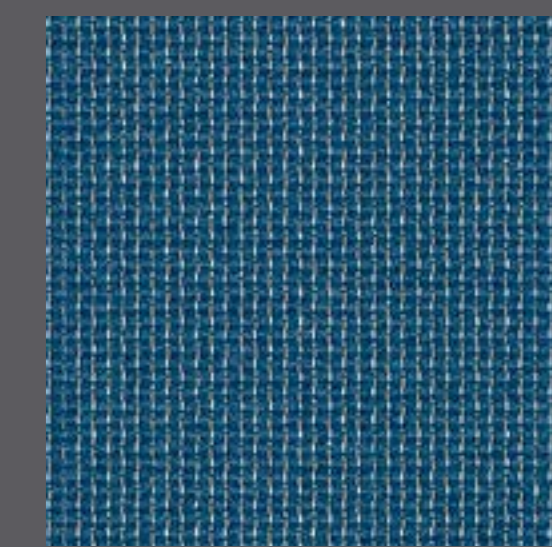
ERSA C 20



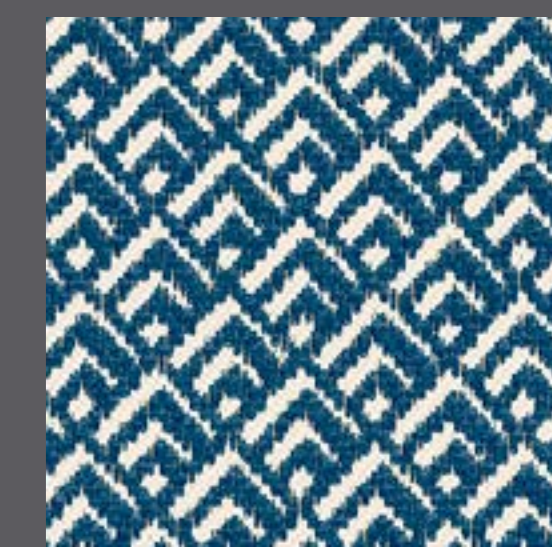
SONOE C 60



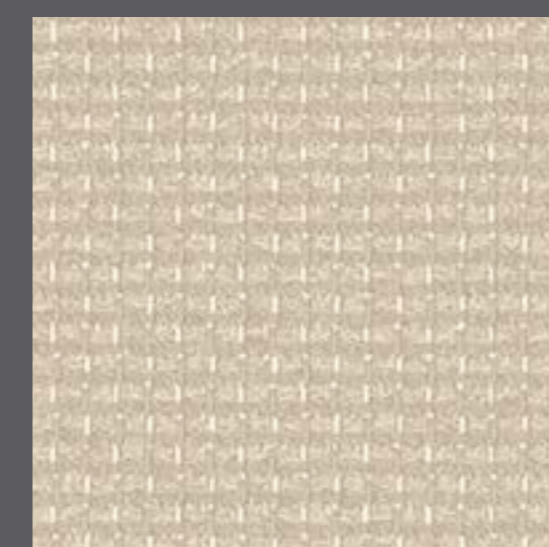
SINOPE C 60



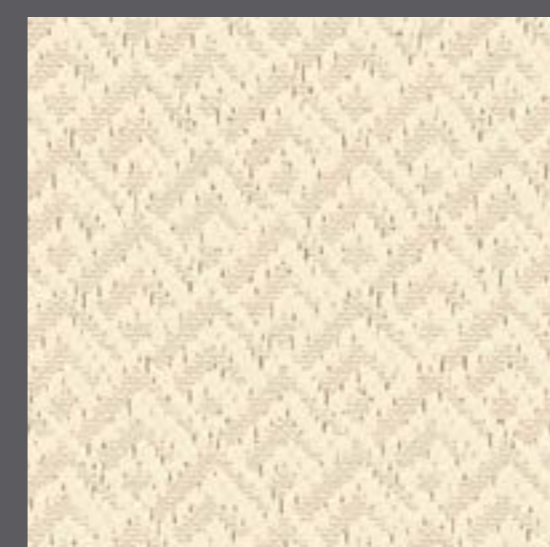
JANO C 60



TIONE C 60



JANO C 20



TIONE C 20



METIS C 20



TEMISTO C 60



ELARA C 60



METIS C 60



SINOPE C 20



SONOE C 20



ERSA C 60





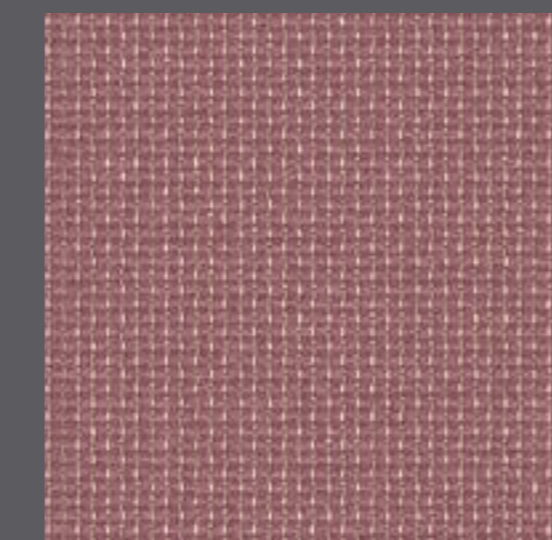
TEMISTO C 35



ELARA C 35



SONOE C 35



JANO C 35



TIONE C 35



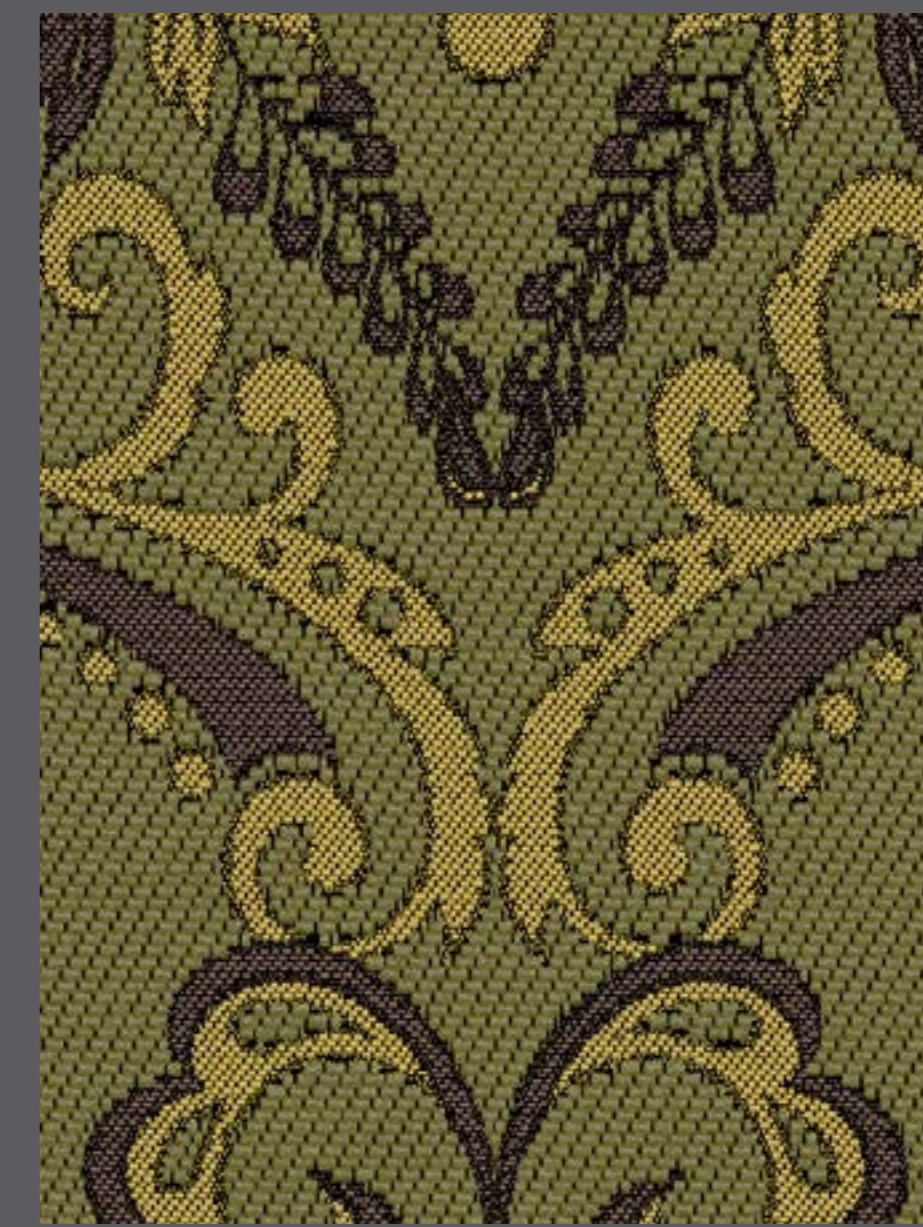
METIS C 35



SINOPE C 35



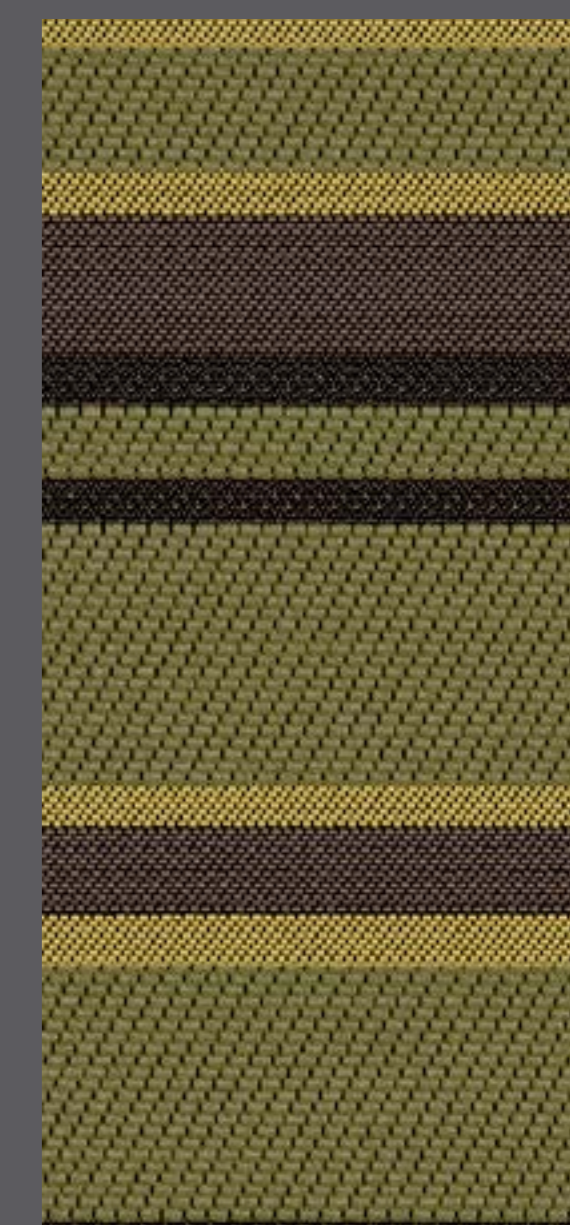
ERSA C 35



ERSA C 55



SONOE C 55



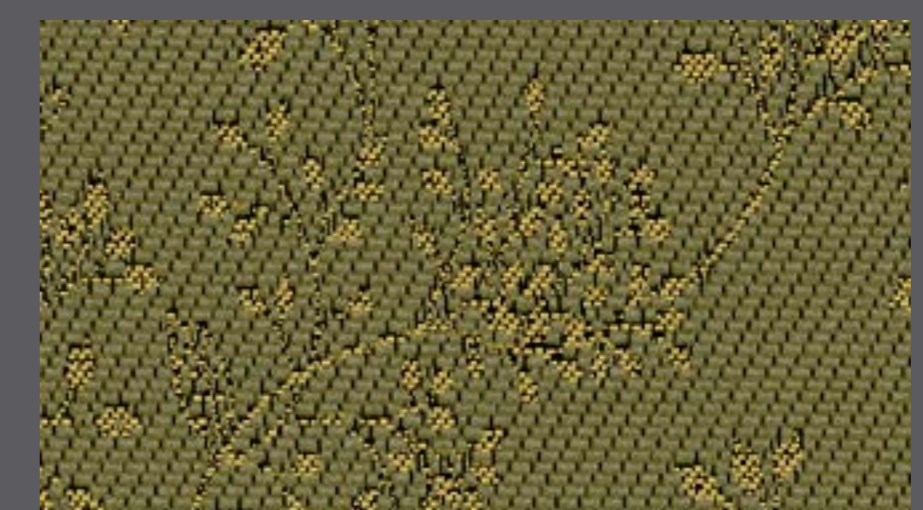
SINOPE C 55



JANO C 55



TIONE C 55



TEMISTO C 55



ELARA C 55



METIS C 55



JANO C 23



TIONE C 23



METIS C 23



TEMISTO C 23



ELARA C 23



ERS A C 23



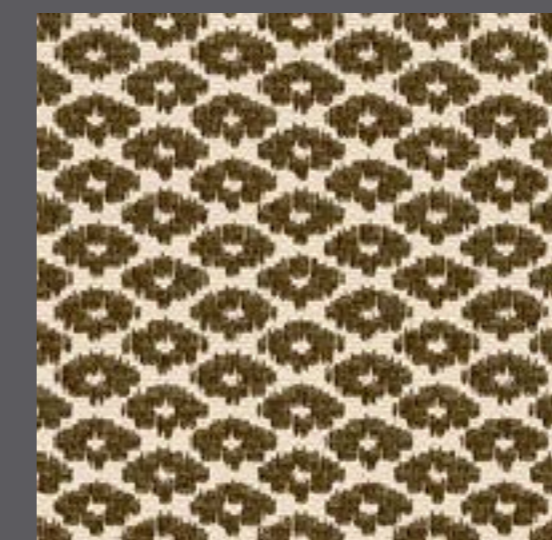
SONOE C 42



JANO C 12



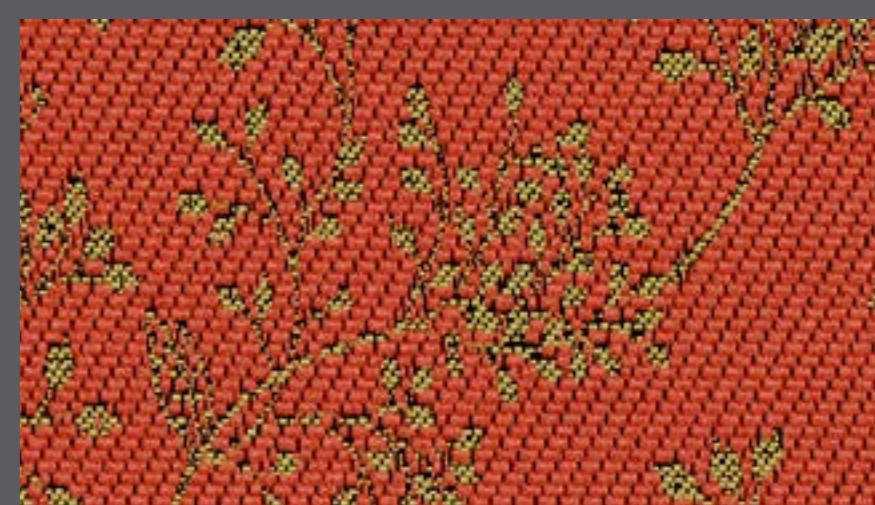
TIONE C 12



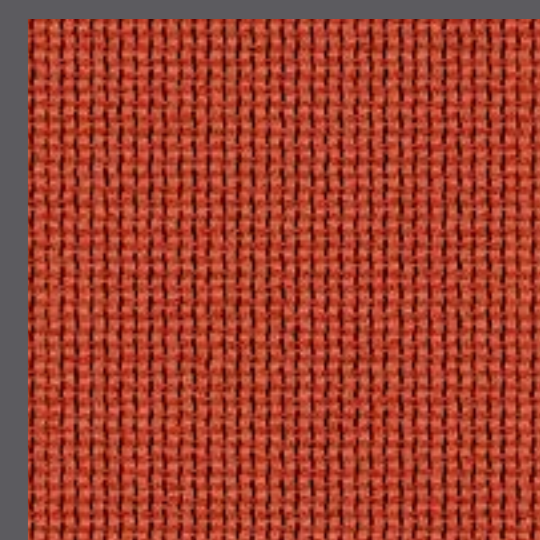
METIS C 12



ELARA C 42



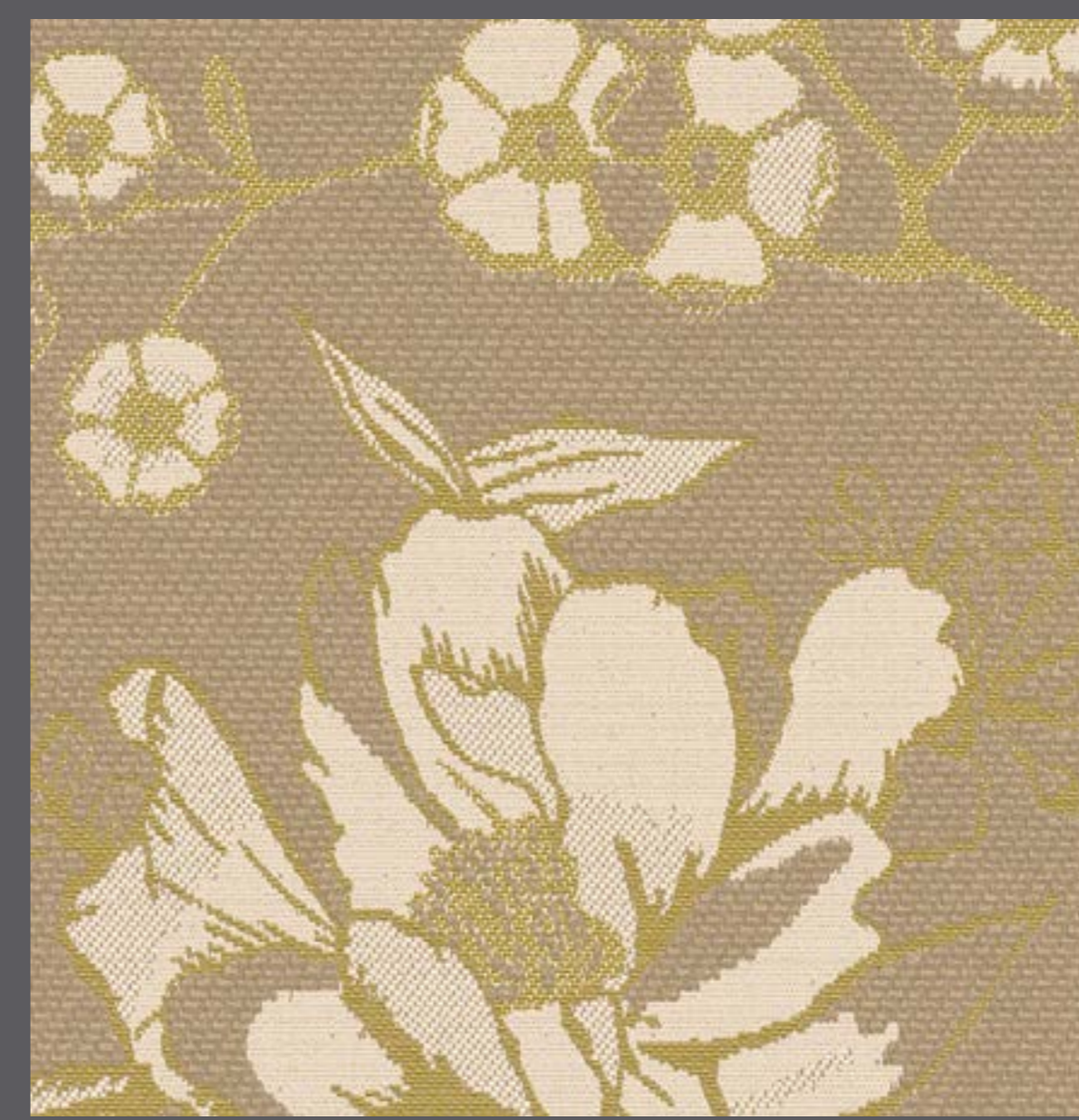
TEMISTO C 42



JANO C 42



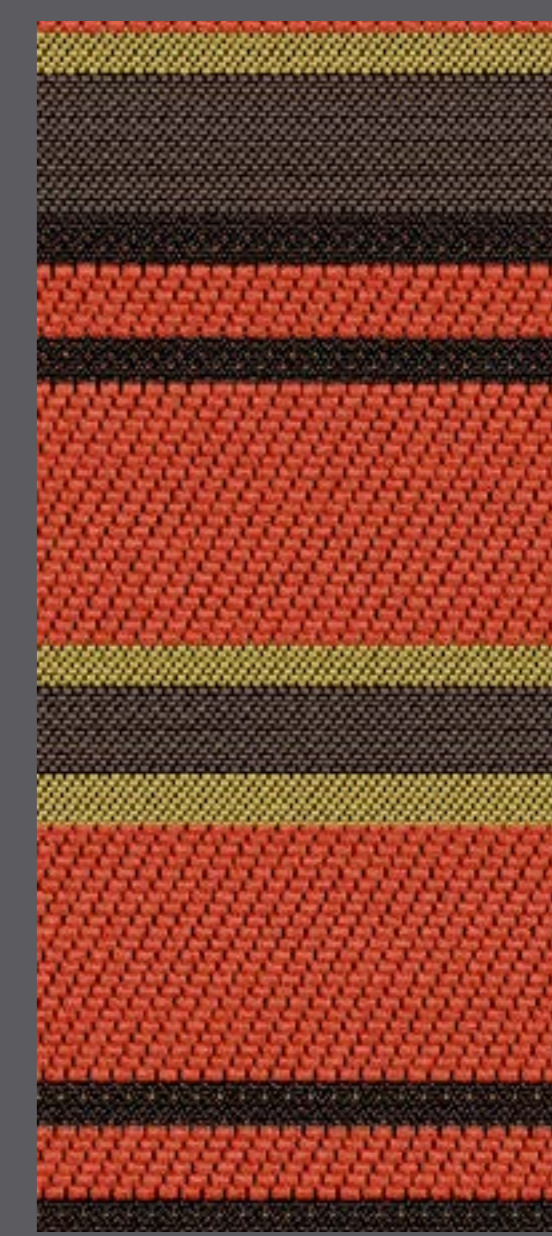
SINOPE C 23



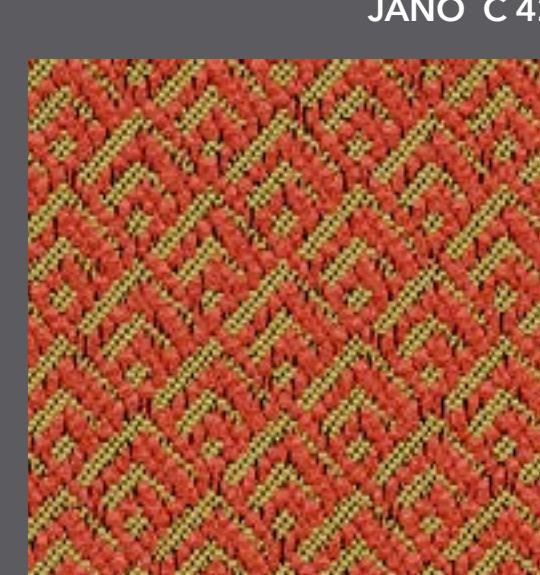
SONOE C 23



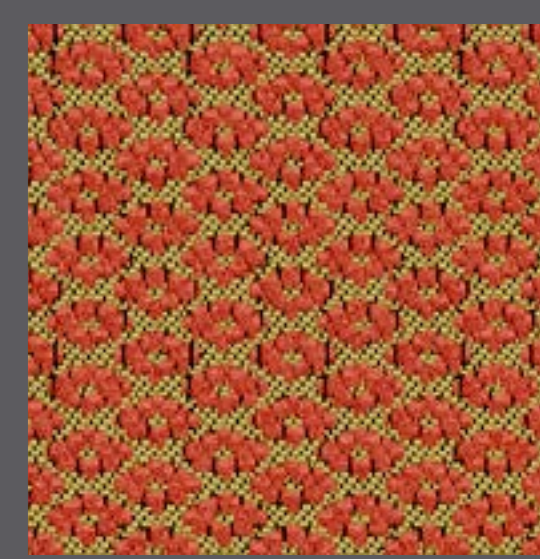
ERS A C 42



SINOPE C 42



TIONE C 42



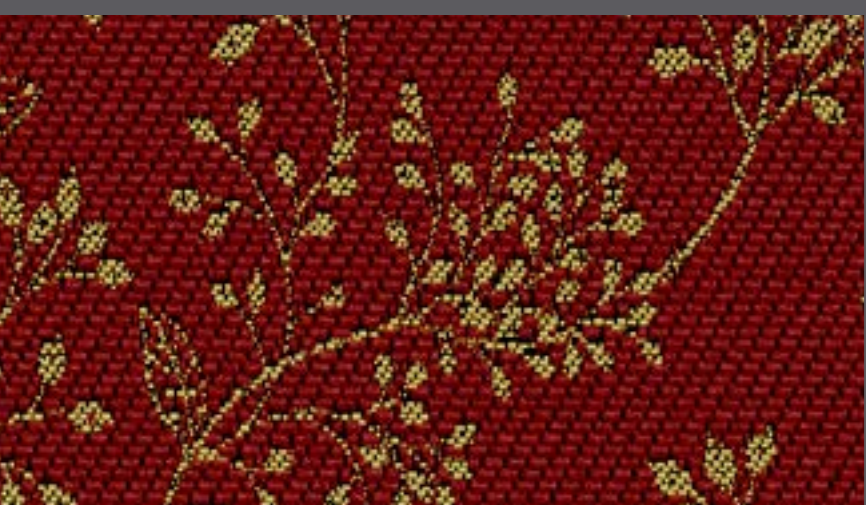
METIS C 42



ELARA C 40



ELARA C 80



TEMISTO C 40



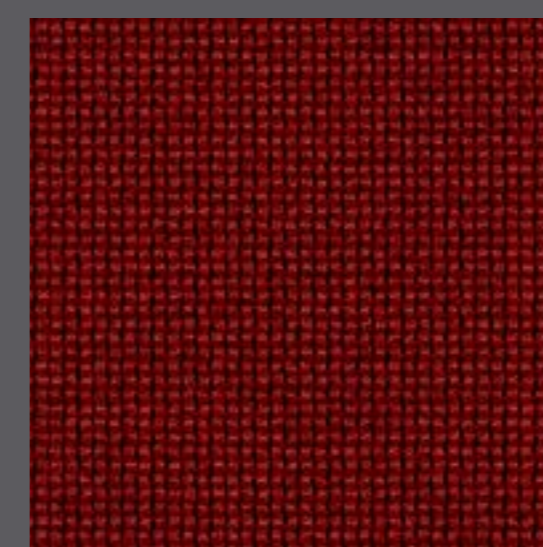
ELARA C 80



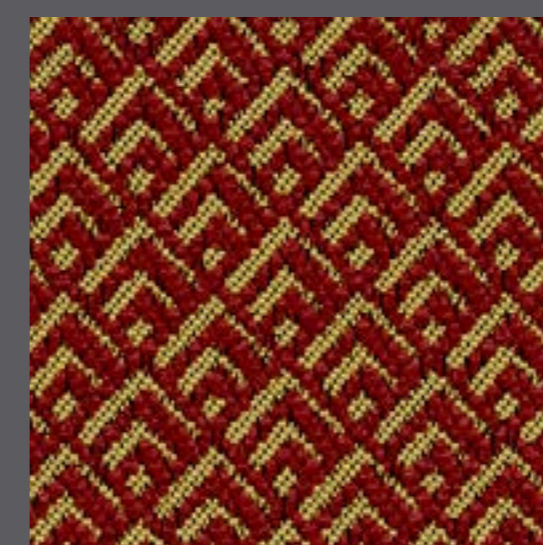
ERSA C 40



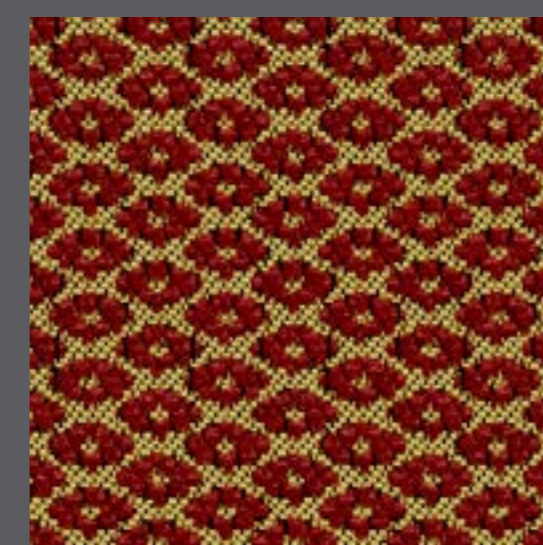
SINOPE C 40



JANO C 40



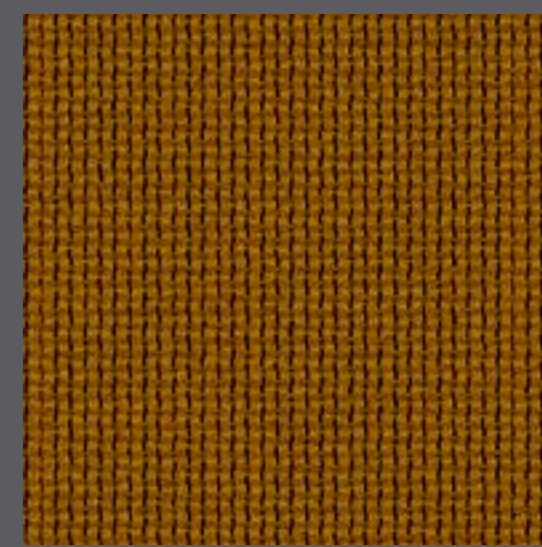
TIONE C 40



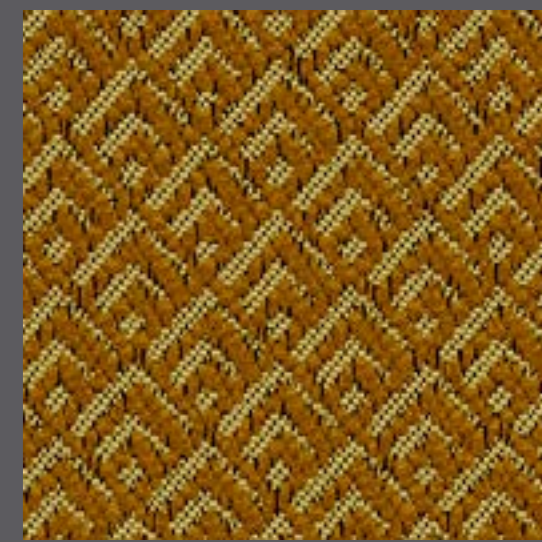
METIS C 40



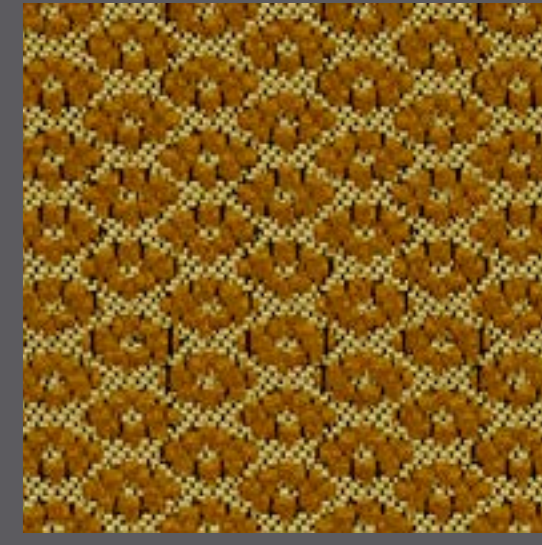
SONOE C 40



JANO C 80



TIONE C 80



METIS C 80



Selene

TEXTILE COLLECTION



ERSA. Rapport 35x35 cm



EUPORIA. Rapport 70x40 cm

CARACTERÍSTICAS TÉCNICAS TECHNICAL CHARACTERISTICS CARACTÉRISTIQUES TECHNIQUES

| NOMBRE NAME NOM | COMPOSICIÓN COMPOSITION COMPOSITION | ANCHO (cm) WIDTH (cm) LARGEUR (cm) | GRAMAJE (g/m ²) WEIGHT (g/m ²) GRAMMAGE (g/m ²) | ABRASIÓN (ciclos) ABRASION TEST (cycles) TEST D'ABRASION (cycles) | PILLING PILLING PILLING | COSTURAS (u/t) SEAM STRENGTH (warp/weft) RESISTANCE DES COUTURES (c/t) |
|-----------------------|---|--|---|---|-------------------------------|--|
| ERSA | 45%PAN-55%PES | 140 | 400 | 35.000 | 5 | 4,2/2,5 |
| SONOE | 45%PAN-55%PES | 140 | 407 | 35.000 | 5 | 4,3/2,5 |
| SINOPE | 45%PAN-55%PES | 140 | 407 | 35.000 | 5 | 4,8/4,7 |
| ELARA | 45%PAN-55%PES | 140 | 404 | 35.000 | 5 | 3,5/2,3 |
| TEMISTO | 50%PAN-50%PES | 140 | 390 | 25.000 | 5 | 5/3,2 |
| METIS | 50%PAN-50%PES | 140 | 355 | 25.000 | 5 | 5,3/3 |
| TIONE | 50%PAN-50%PES | 140 | 365 | 25.000 | 5 | 4,8/2,2 |
| JANO | 46%PAN-20%CO-34%PES | 140 | 348 | 25.000 | 5 | 2,8/3 |

ABRASION TEST: UNE-EN ISO 12947-2 PILLING: UNE-EN ISO 12945-2 SEAM STRENGTH: UNE-EN ISO 13936-2



MADE IN SPAIN



PIEL, S.A.
Avda. Del Cordell de Múrcia, 6
46890 AGULLENT - SPAIN
+34 962 907 400
www.piel.es