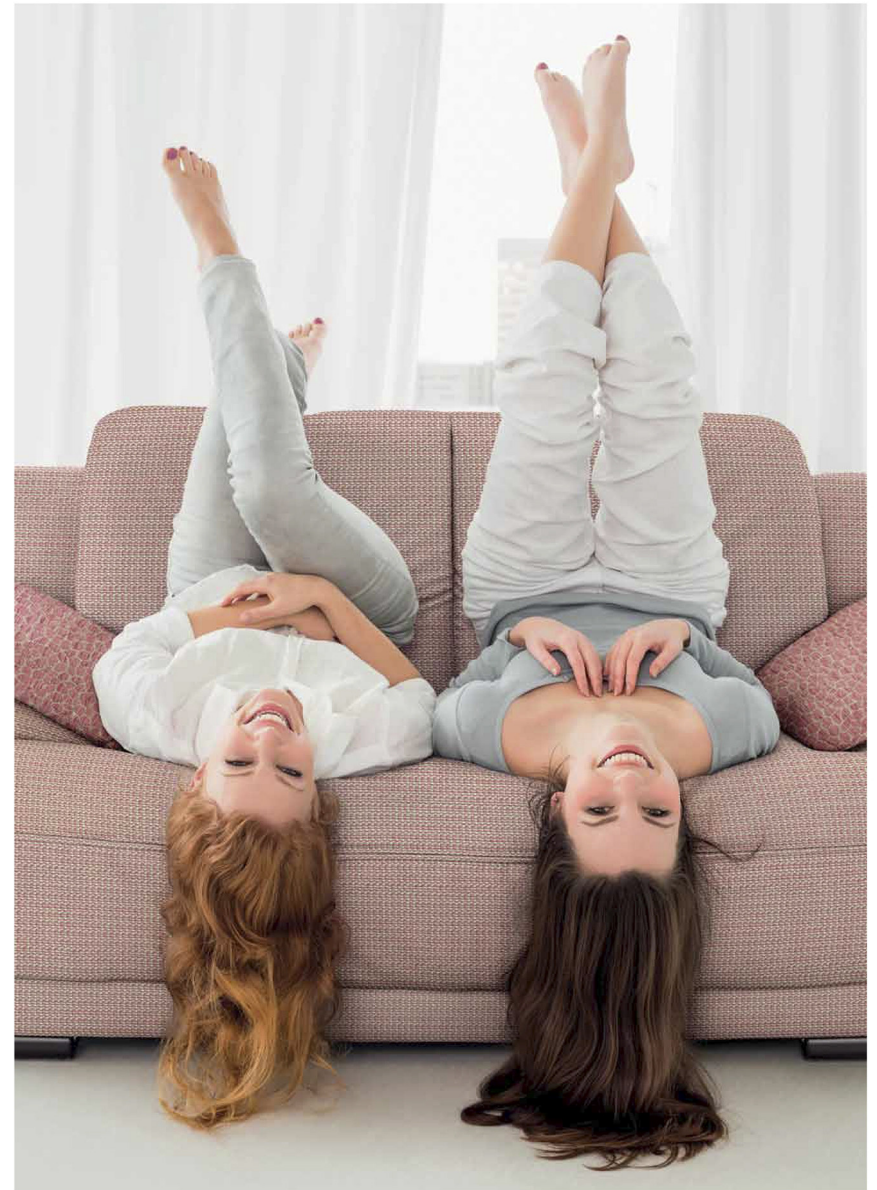


Topographic Collection

PRODUCTO FABRICADO EN ESPAÑA | PRODUCT MADE IN SPAIN | PRODUIT FABRIQUÉ EN ESPAGNE

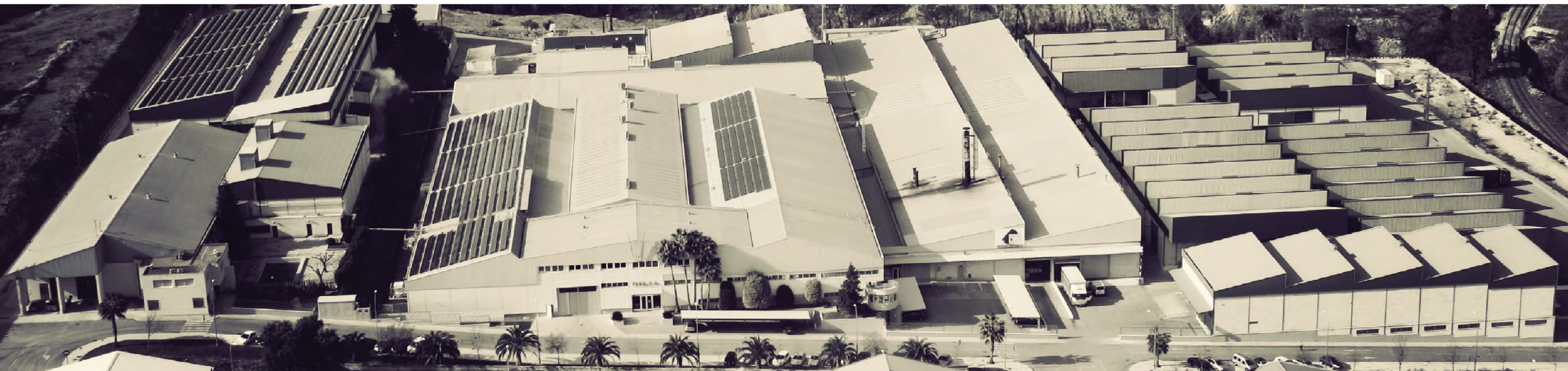


PIEL S.A. - Avda. Del Cordell de Múrcia, 6 - 46880 ASLLENT - SPAIN
+34 969 907 420
info@piel.es



Topographic Collection





Piel SA, fundada en 1976, es una empresa textil con una área de producción de más de 70.000m², certificada por SGS para la Norma de Calidad y Satisfacción del Cliente ISO 9001: 2008. Todos nuestros tejidos se someten a rigurosos ensayos de calidad antes de su envío para asegurar un excelente rendimiento, llegando a su superar los estándares de las normas establecidas por organismos internacionales.

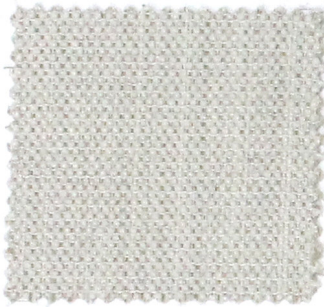
Piel SA, founded in 1976, is a textile company with 70.000m² production area, certified by SGS for the Quality and Customer Satisfaction Standard ISO 9001:2008. All of our fabrics are put through a rigorous test criteria before dispatch to ensure excellent performance and exceeding the regulatory standards



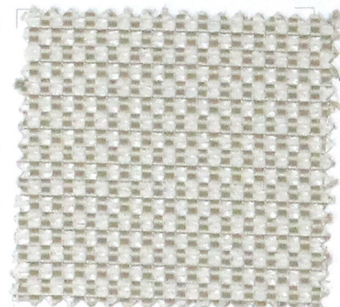
KERAN C/26



CERSEI C/26



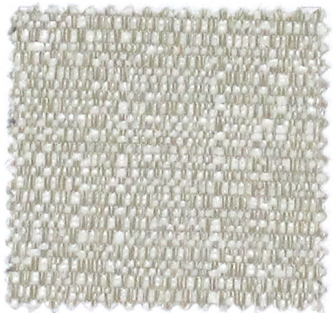
TYREK C/26



ARENISCA C/26



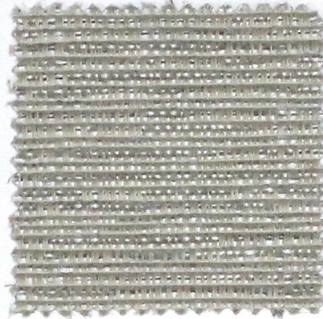
TYRION C/26



MORTERO C/26



LANCEL C/26



MORTERO C/70



LANCEL C/70



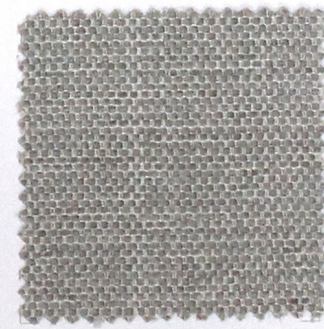
KERAN C/70



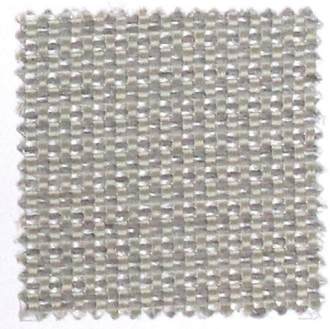
CERSEI C/70



TYRION C/70



TYREK C/70

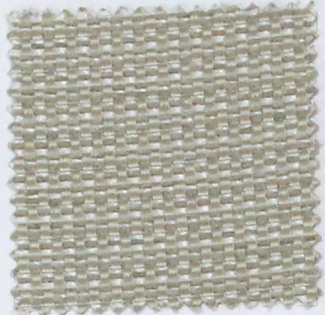


ARENISCA C/70

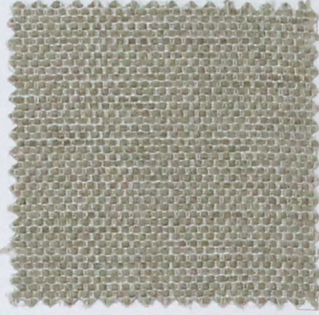




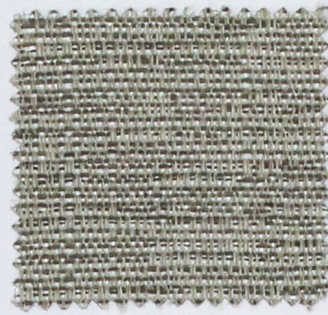
KERAN C/20



ARENISCA C/20



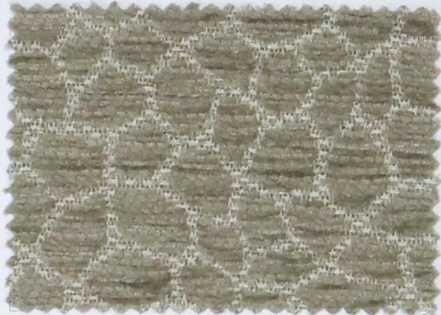
TYREK C/20



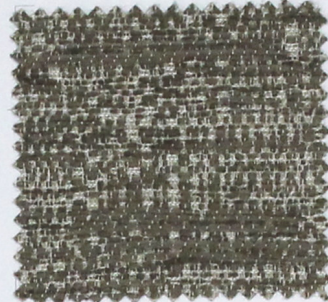
MORTERO C/10



CERSEI C/20



TYRION C/20



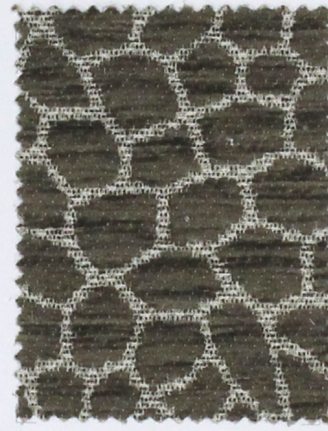
LANCEL C/10



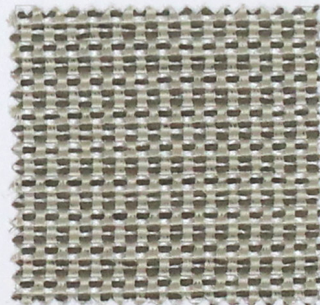
LANCEL C/20



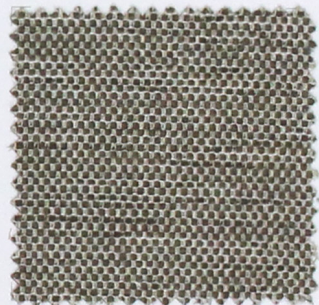
MORTERO C/20



TYRION C/10



ARENISCA C/10



TYREK C/10



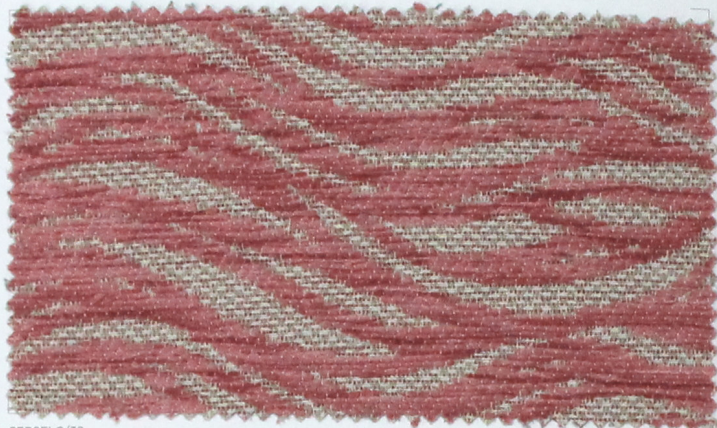
CERSEI C/10



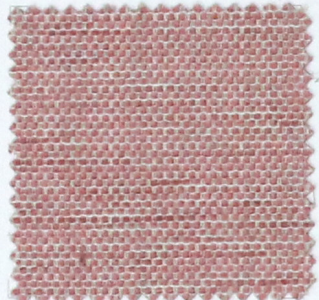
KERAN C/10



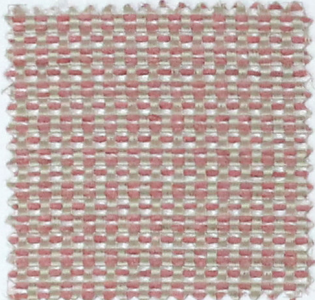
KERAN C/32



CERSEI C/32



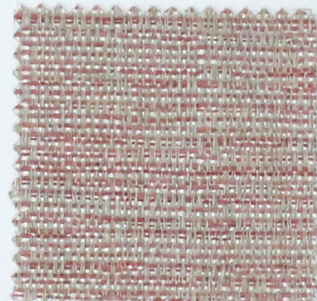
TYREK C/32



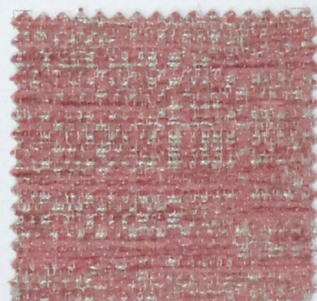
ARENISCA C/32



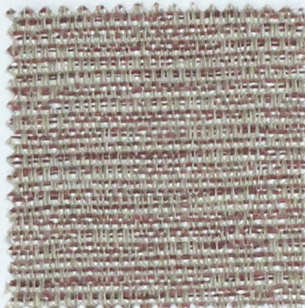
TYRION C/32



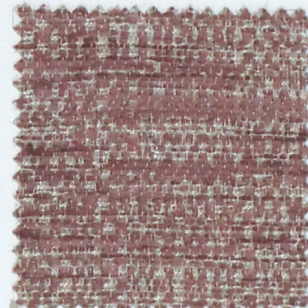
MORTERO C/32



LANCEL C/32



MORTERO C/30



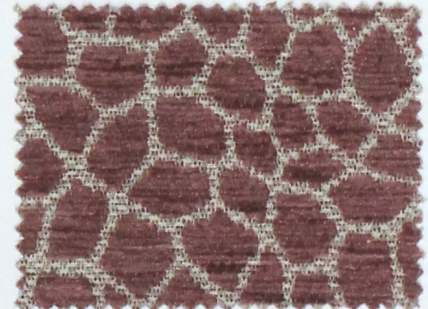
LANCEL C/30



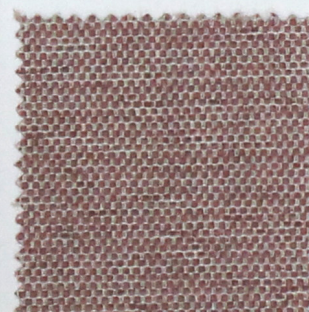
KERAN C/30



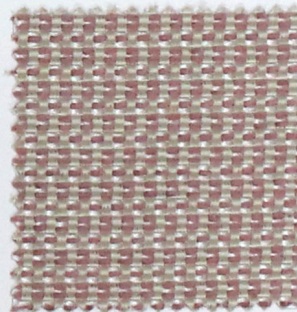
CERSEI C/30



TYRION C/30

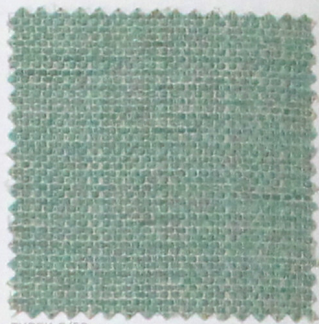
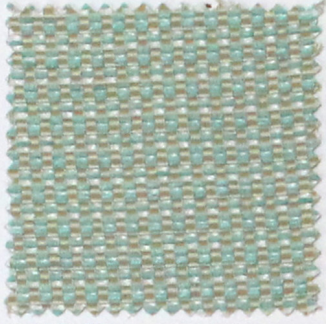


TYREK C/30



ARENISCA C/30





KERAN C/50

ARENISCA C/50

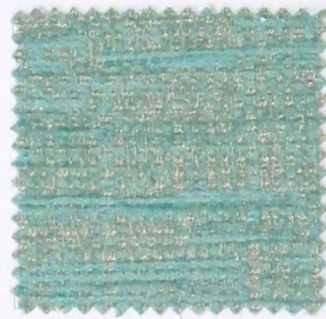
TYREK C/50



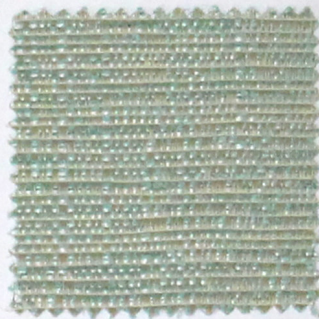
CERSEI C/50



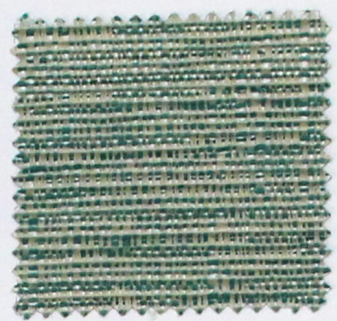
TYRION C/50



LANCEL C/50



MORTERO C/50



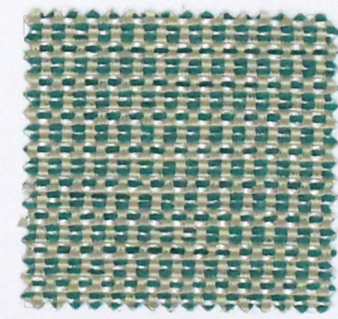
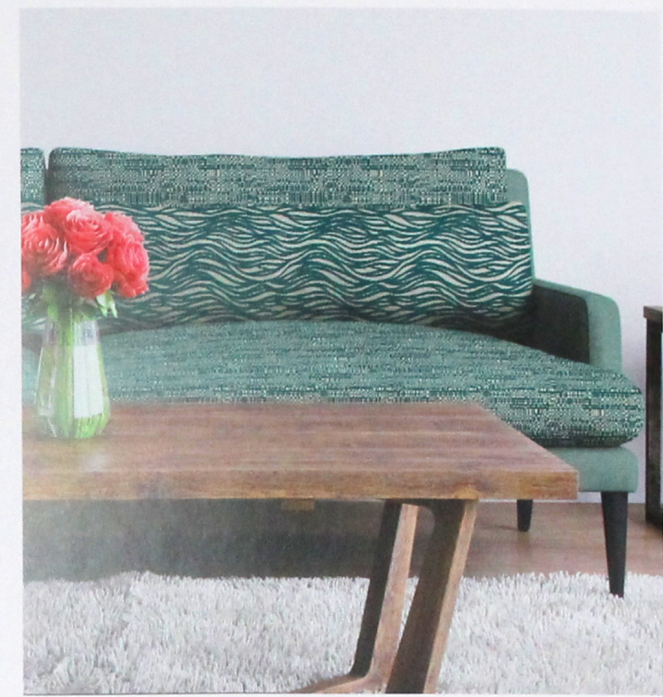
MORTERO C/52



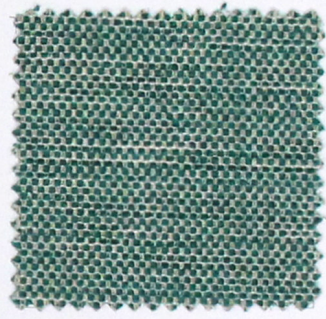
LANCEL C/52



TYRION C/52



ARENISCA C/52



TYREK C/52



CERSEI C/52



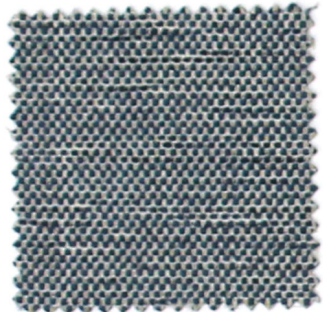
KERAN C/52



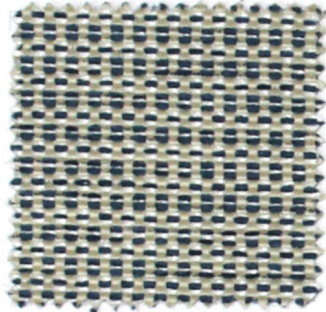
KERAN C/60



CERSEI C/60



TYREK C/60



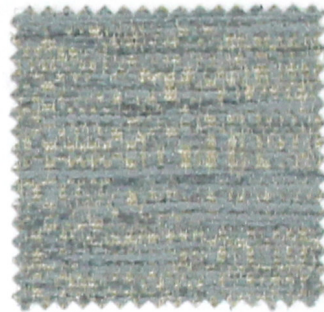
ARENISCA C/60



TYRION C/60



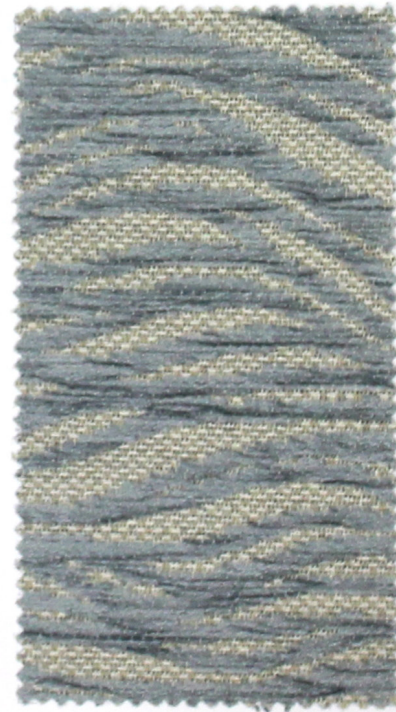
MORTERO C/68



LANCEL C/68



KERAN C/68



CERSEI C/68



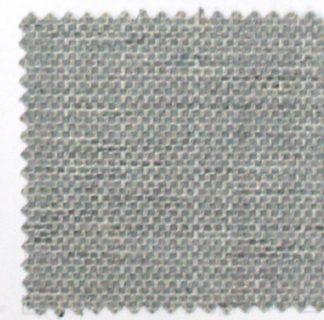
TYRION C/68



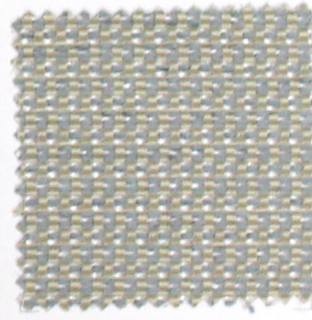
MORTERO C/60



LANCEL C/60

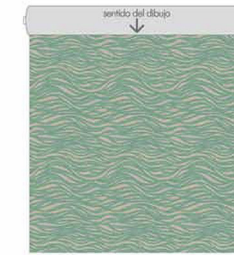


TYREK C/68



ARENISCA C/68

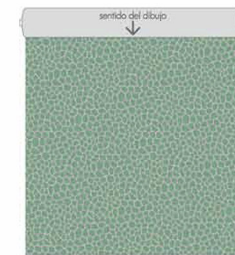
Topographic Collection



CERSEI. Rapport 35x43 cm



KERAN. Rapport 23,6x48,3 cm



TYRION. Rapport 35x36,6 cm

CARACTERÍSTICAS TÉCNICAS TECHNICAL CHARACTERISTICS CARACTÉRISTIQUES TECHNIQUES

NOMBRE NAME NOM	COMPOSICIÓN COMPOSITION COMPOSITION	ANCHO (cm) WIDTH (cm) LARGEUR (cm)	GRAMAJE (g/m ²) WEIGHT (g/m ²) GRAMMAGE (g/m ²)	ABRASIÓN (ciclos) ABRASION TEST (cycles) TEST D'ABRASION (cycles)	PILLING PILLING PILLING	COSTURAS (u/l) SEAM STRENGTH (warp/weft) RES. DES COUTURES (c/v)
CERSEI	51%PES-49%PAN	140	340	28.000	5	3,8/5,5
KERAN	51%PES-49%PAN	140	340	30.000	5	5,5/3,5
TYRION	51%PES-49%PAN	140	340	28.000	4-5	4,6/3,6
LANCEL	51%PES-49%PAN	140	340	45.000	4-5	3,3/2,5
TYREK	54%PES-46%PAN	140	310	35.000	5	6,3/2,5
ARENISCA	48%PES-27%PAN-25%PA	140	330	40.000	4-5	4,8/5,3
MORTERO	37%PES-33%PAN-30%PA	140	400	30.000	4-5	2,8/2

LOS TESTS SE HAN REALIZADO BASÁNDOSE EN DIFERENTES MUESTRAS DE TEJIDO, POR TANTO SON VALORES MEDIOS E INDICATIVOS.
TESTS HAVE BEEN DONE ON DIFFERENT SAMPLES, THEREFORE THEY SHOULD BE CONSIDERED AS MEPELY GUIDELINES.
LES TESTS ONT ÉTÉ RÉALISÉS EN SE BASANT SUR DIFFÉRENTS ÉCHANTILLONS DE TISSU. POUR CELA CE SONT DES VALEURS MOYENNES ET INDICATIVES.

SSS ABRASION TEST: UNE-EN ISO 12947-2 PILLING: UNE-EN ISO 12945-2 SEAM STRENGTH: UNE-EN ISO 13096-2

TOODS LOS TEJIDOS SON LAVABLES EN LAVADORA. ALL THESE FABRICS ARE MACHINE WASHABLE. TOUS LES TISSUS SONT LAVABLES EN MACHINE



Lavado doméstico con jabones neutros a 30°C*
Domestic wash, with neutral soaps and water about 30°C*
Lavage domestique avec des savons neutres à 30°C*



Admite lavado en seco con percloroetileno
Dry cleaning only with perchloroethylene
Lavage à sec avec perchloréthylène seulement



No usar lejía
Don't use bleach
Ne pas utiliser de javel



Planchado al revés a 110°C
Iron by the back side at 110°C
Repassage à l'envers à 110°C



No usar secadora
Do not tumble dry
Ne pas utiliser de sèche-linge

*Para la óptima conservación del tejido, aconsejamos su lavado en un establecimiento especializado.
*For the best maintenance of the fabric, we recommend to use dry cleaning.
*Pour une conservation optimale du tissu, nous vous conseillons un lavage dans un établissement spécialisé.

PRODUCTO FABRICADO EN ESPAÑA PRODUCT MADE IN SPAIN PRODUIT FABRIQUÉ EN ESPAGNE

PIEL SA

PIEL, S.A. - Avda. Del Cordell de Mirca, 6 - 48890 AGUILLENT - SPAIN

+34 902 907 400
www.piel.es