

# NATURAL

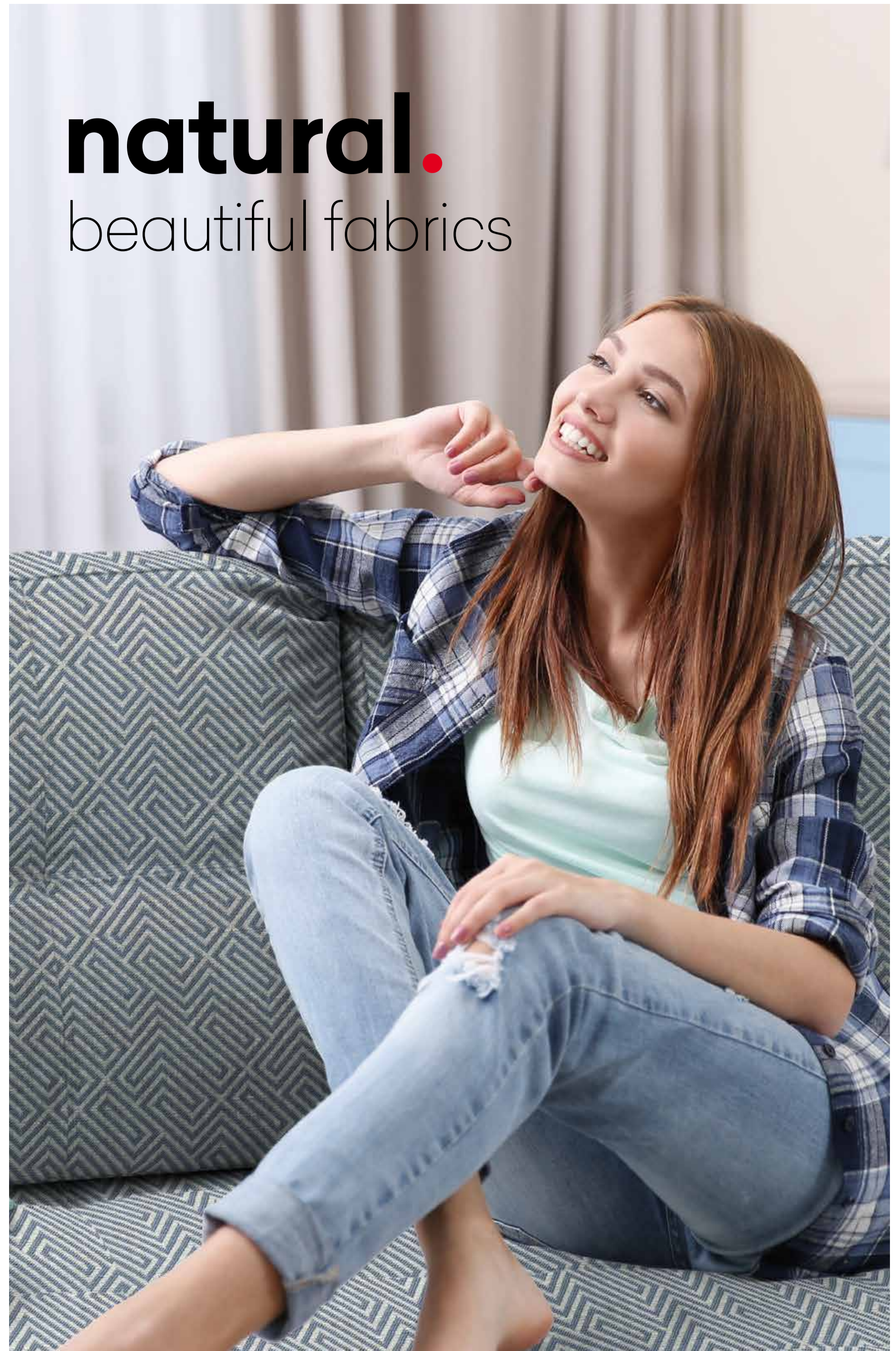
GLORMEB  
GROUP

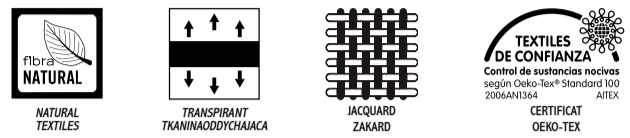


**GLORMEB**  
GROUP



**natural.**  
beautiful fabrics





NOVARA 1



NOVARA 1



TRIESTE 1



PINEDA 2



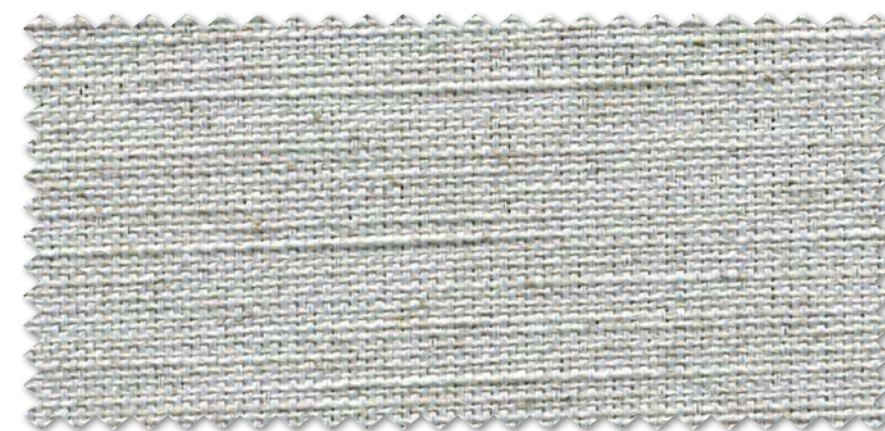
COMO 1



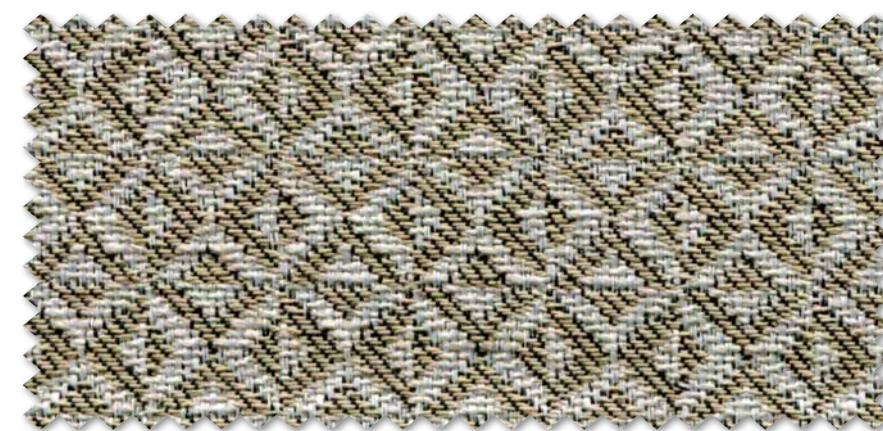
QUEEN VELVET 9



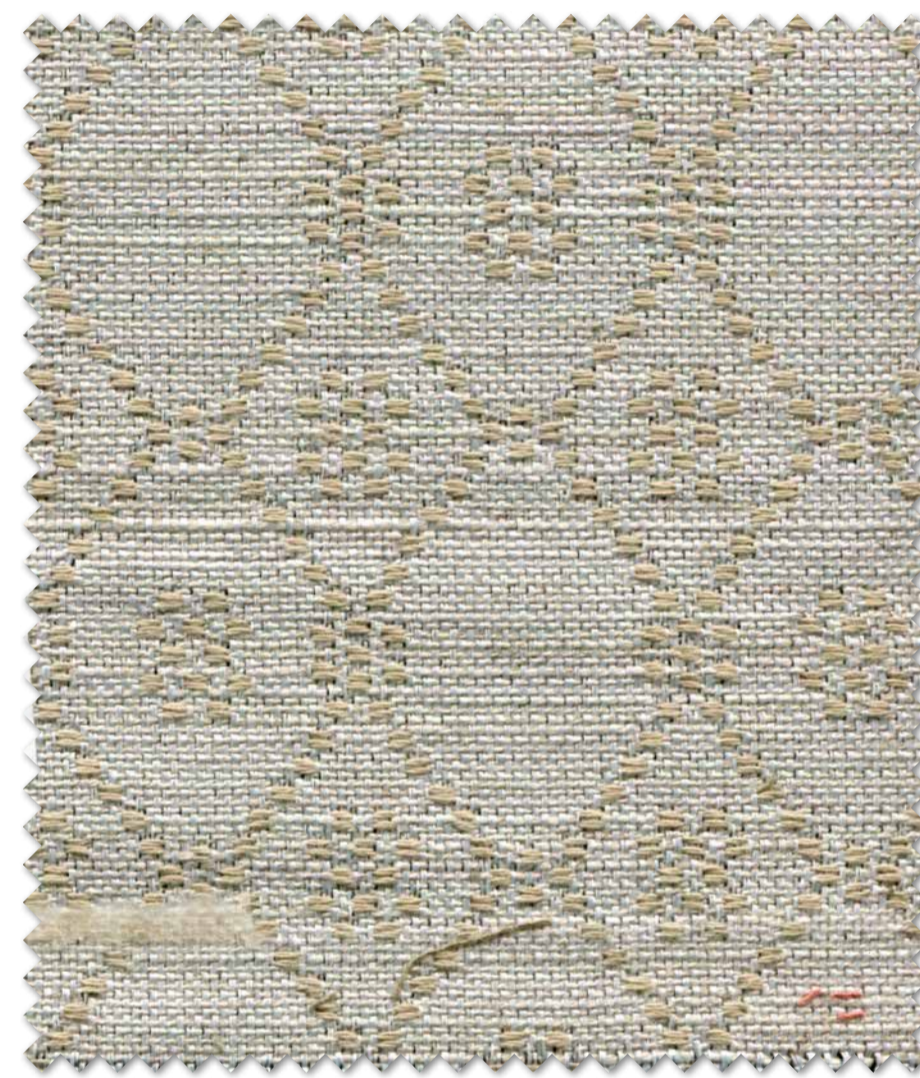
QUEEN VELVET 10



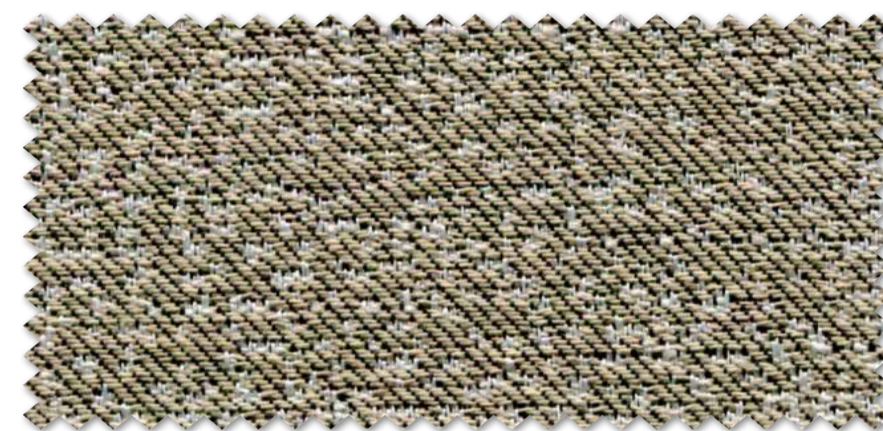
TRIESTE 1



MONTINI 1



SAVONA 1



BARI 1



PIANORD 1



PIANORD 2

PIANORD 2

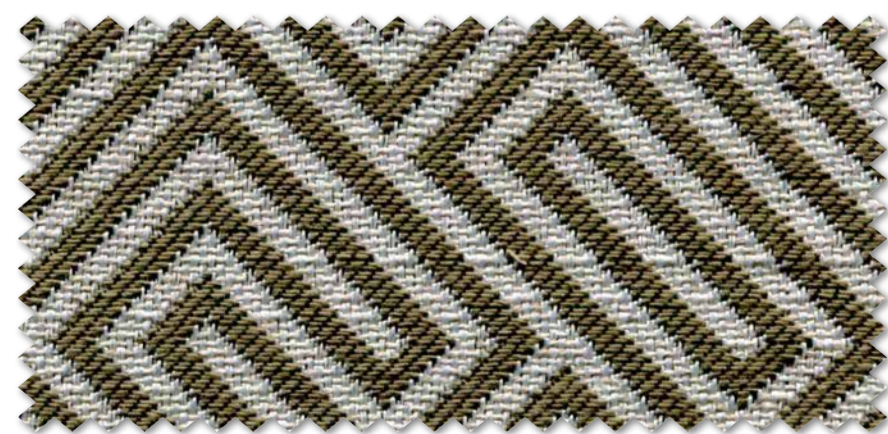




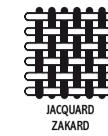
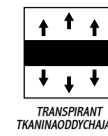
MONTINI 2



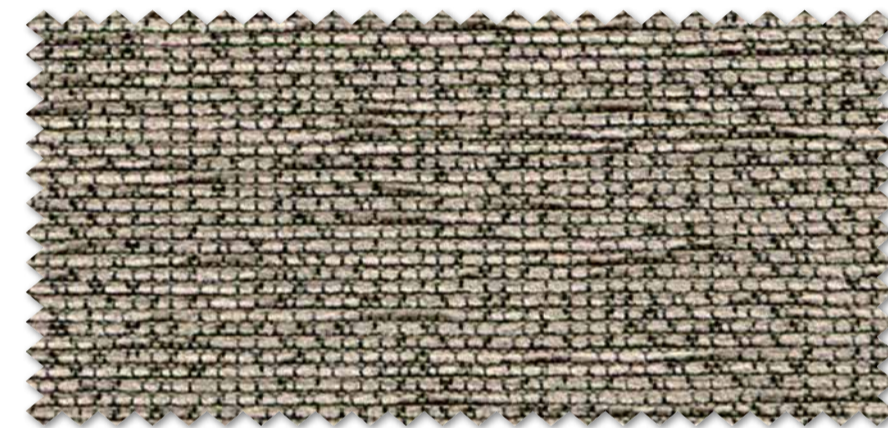
MONTINI 2



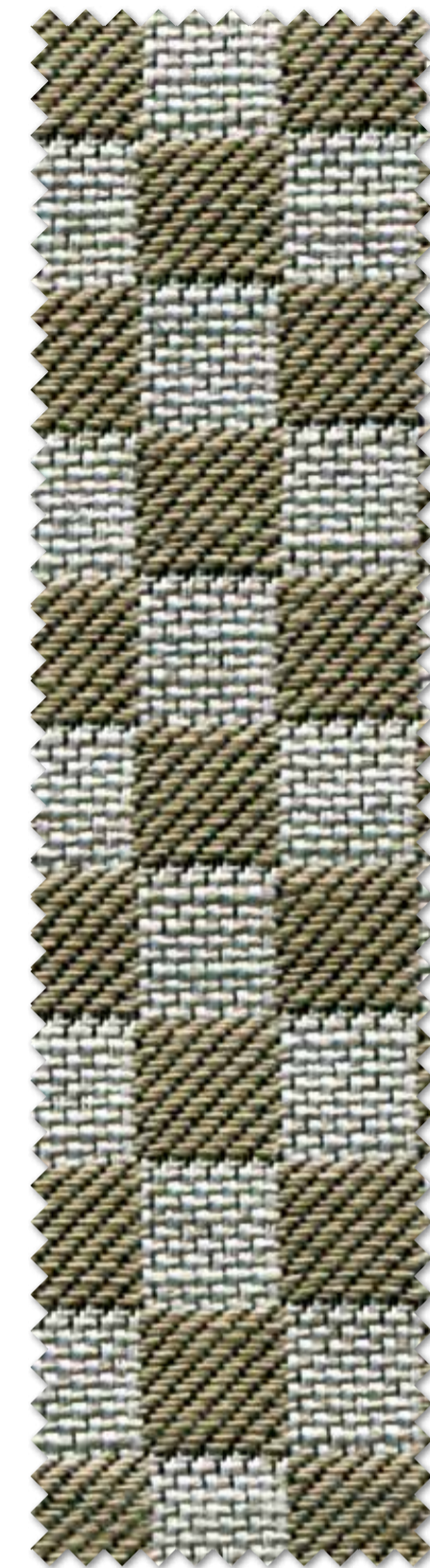
NOVARA 2



COMO 2



PINEDA 3



PIANORD 2



BARI 2



QUEEN VELVET 12



QUEEN VELVET 13



SAVONA 2



QUEEN 12

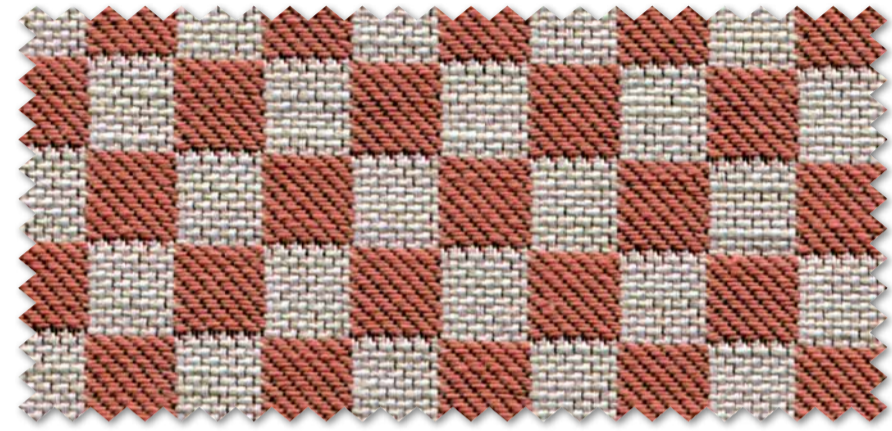
QUEEN 12

PIANORD 2

QUEEN 12



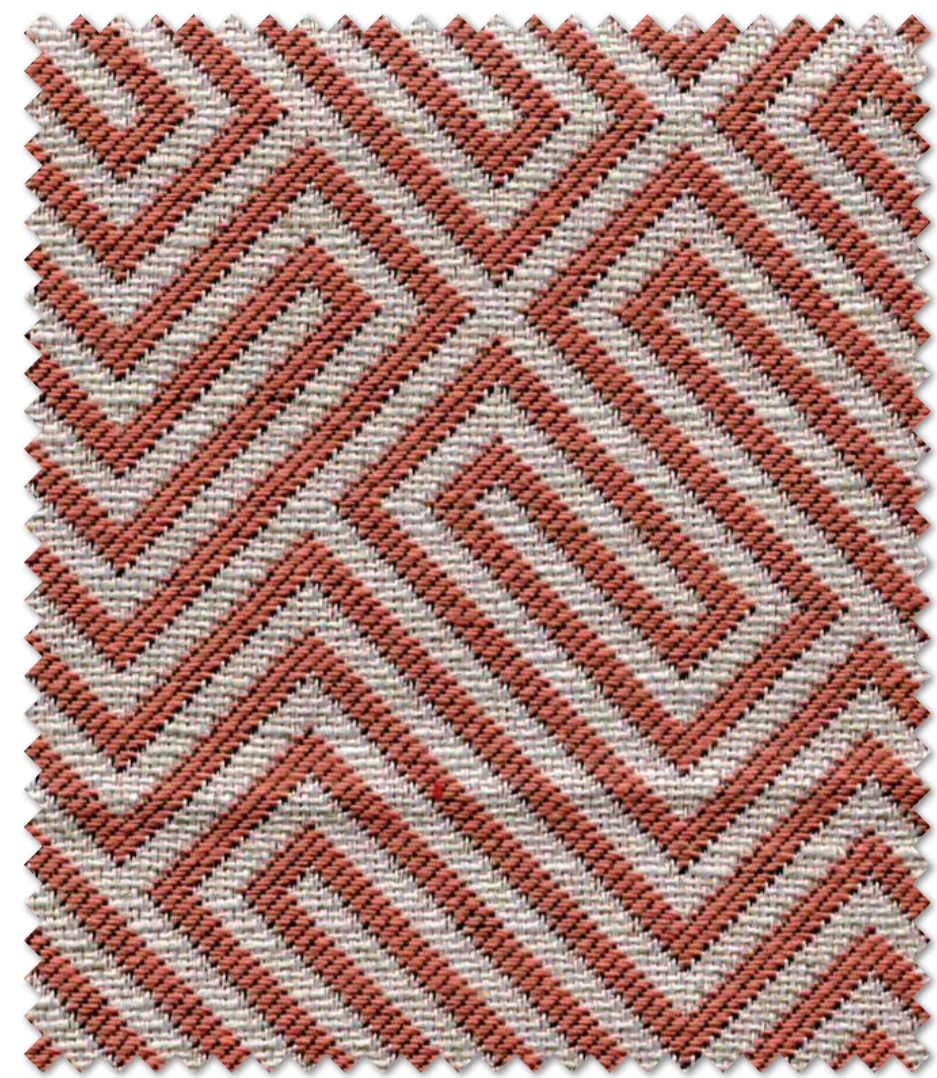
SAVONA 3



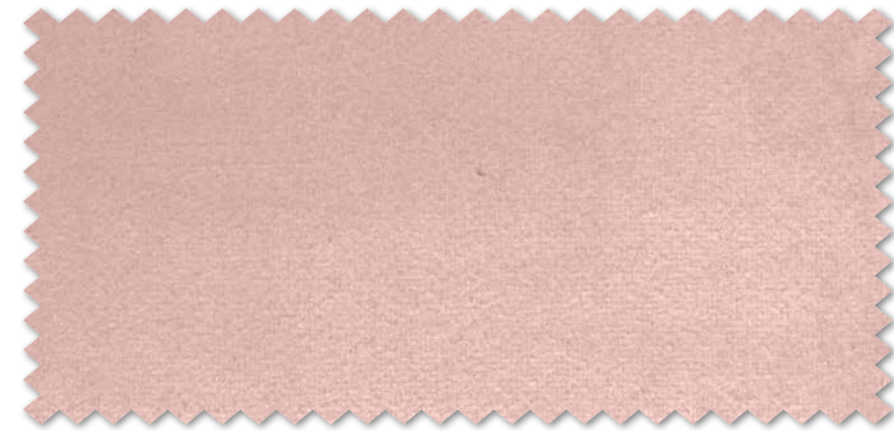
PIANORD 3



COMO 3



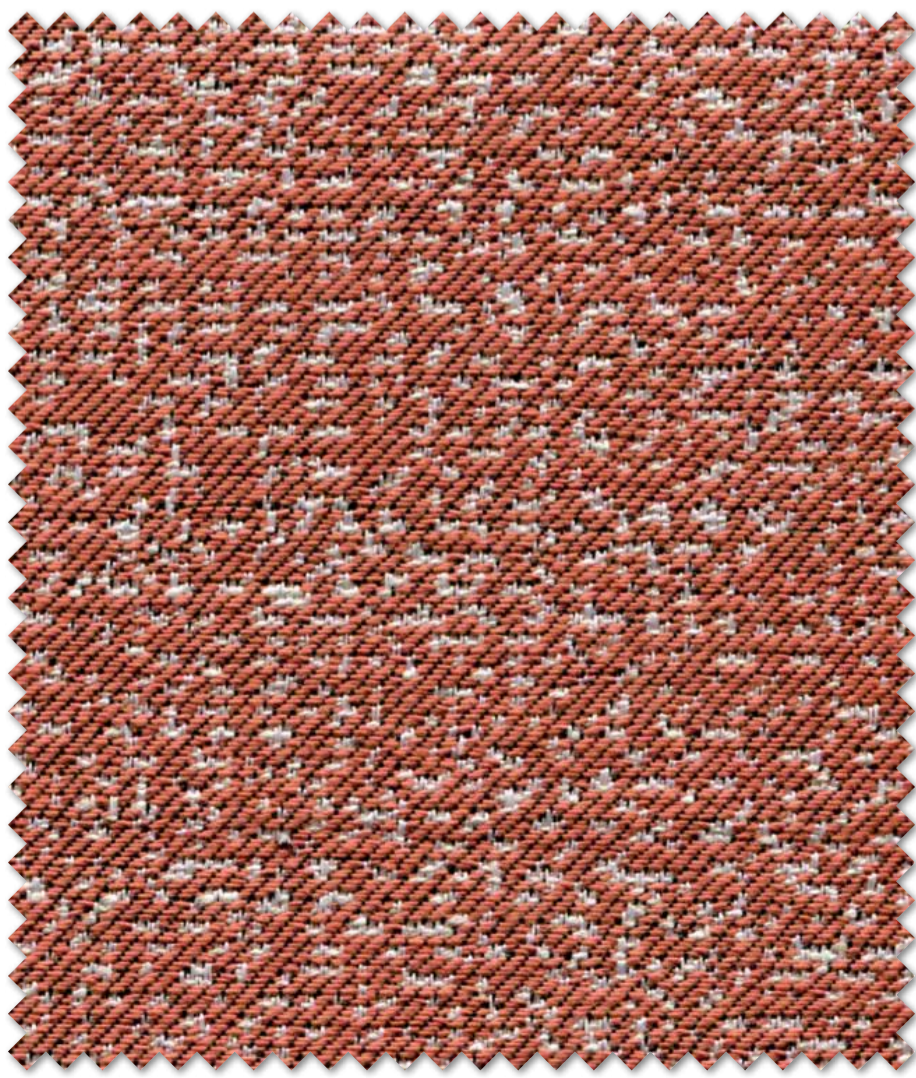
NOVARA 3



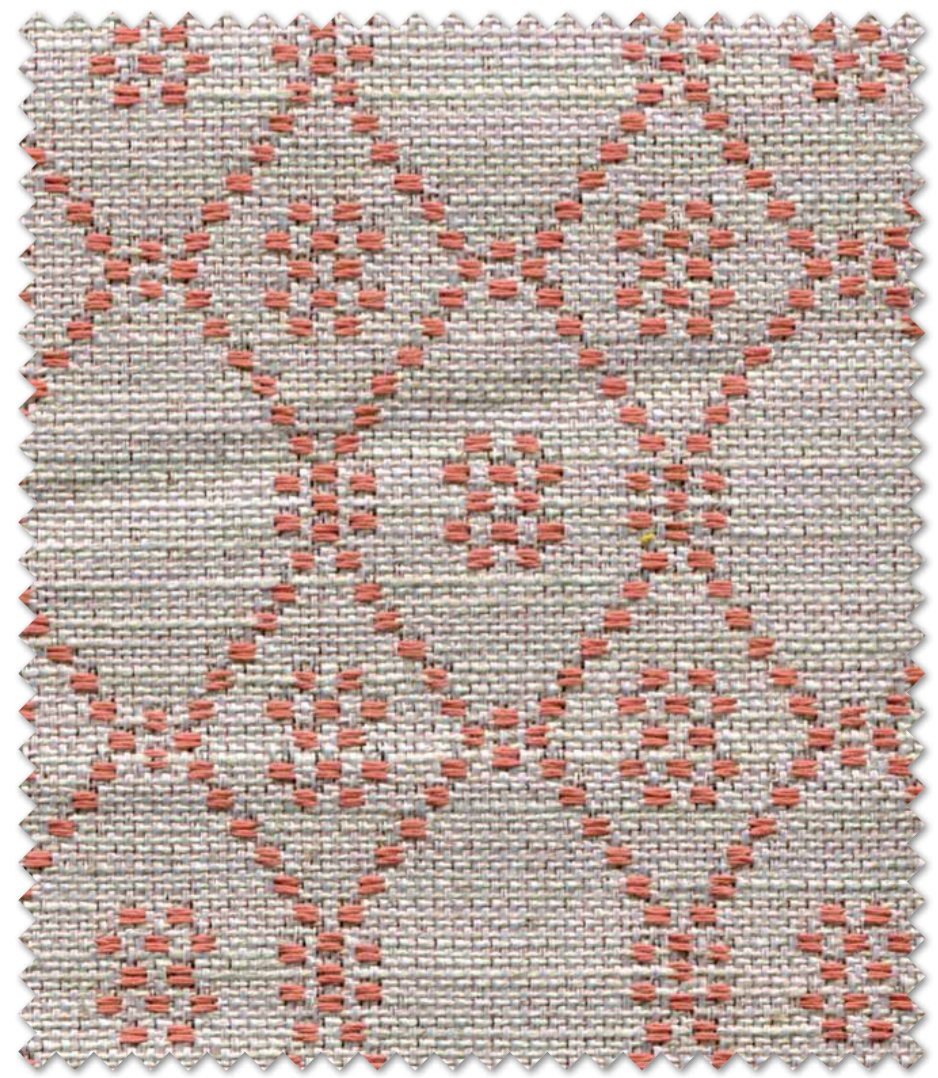
QUEEN VELVET 30



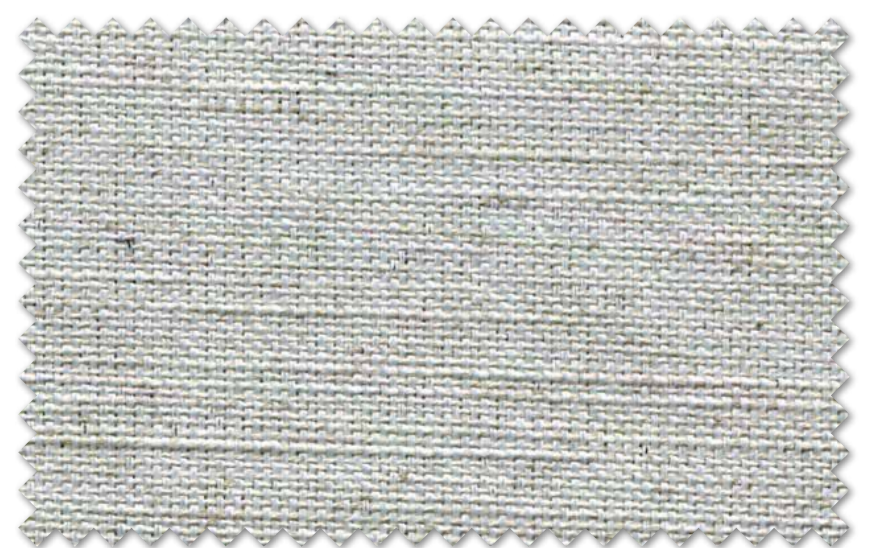
QUEEN VELVET 31



BARI 3



SAVONA 3



TRIESTE 1

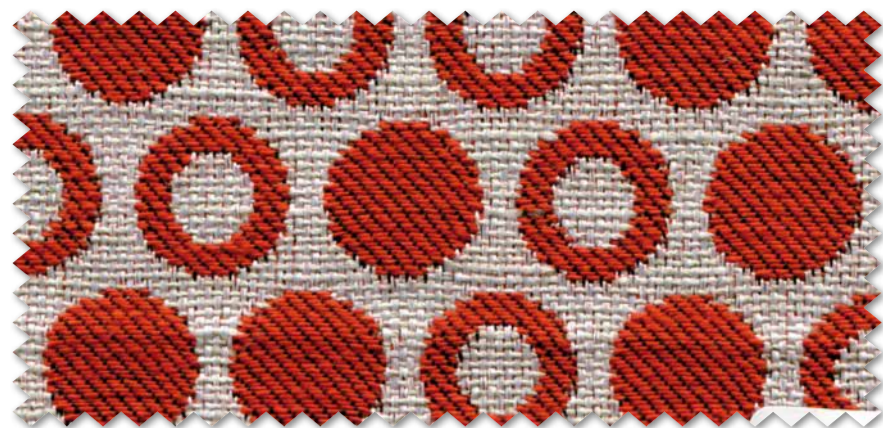


COMO 3

QUEEN 31



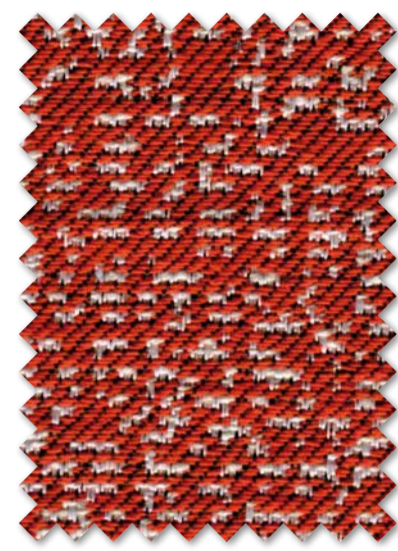
NOVARA 4



COMO 4



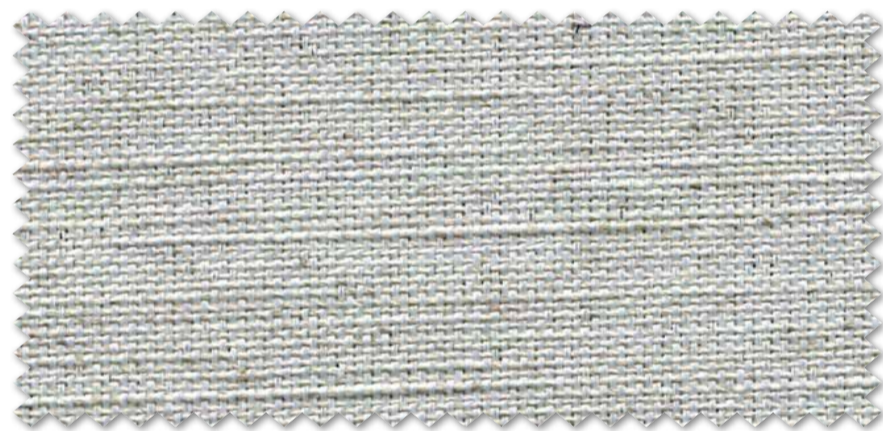
QUEEN VELVET 19



BARI 4



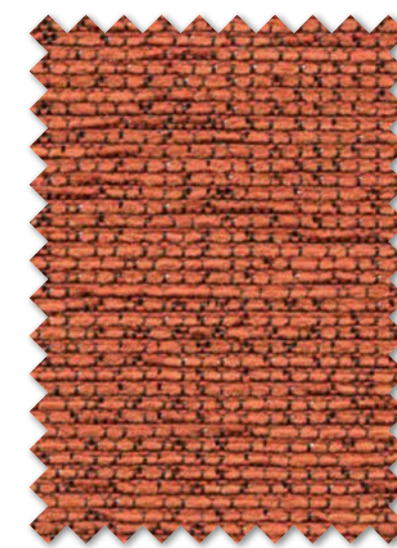
QUEEN VELVET 16



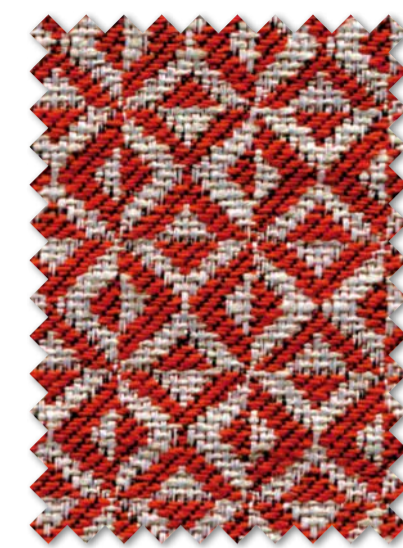
TRIESTE 1



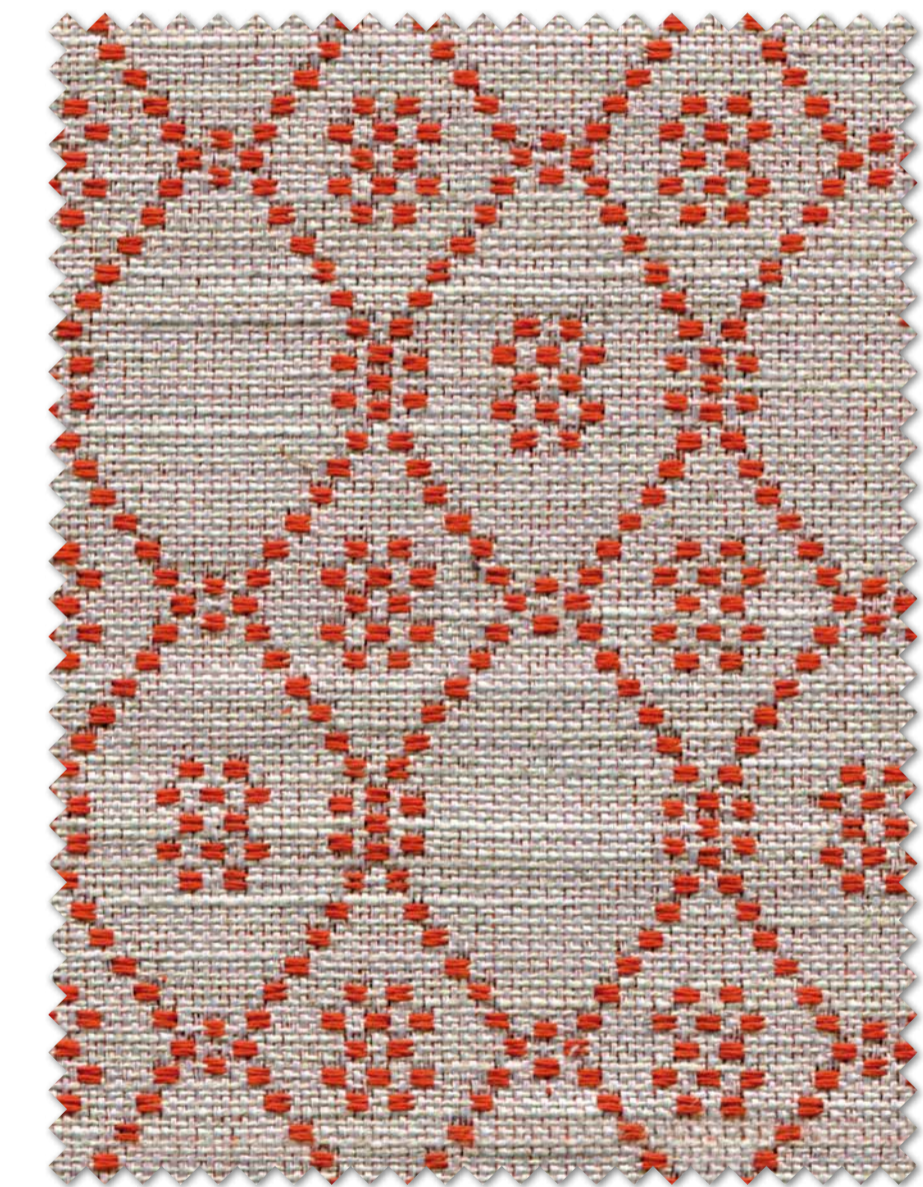
PIANORD 4



PINEDA 7



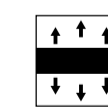
MONTINI 4



SAVONA 4

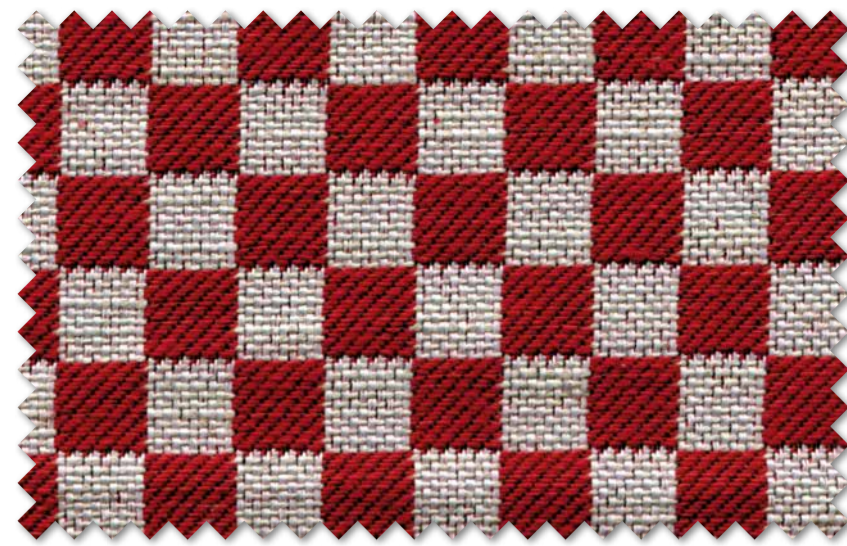


QUEEN VELVET 18

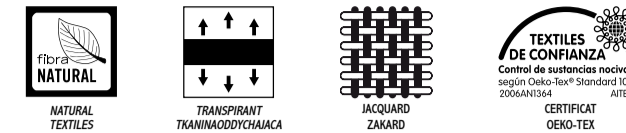




QUEEN VELVET 22



PIANORD 5



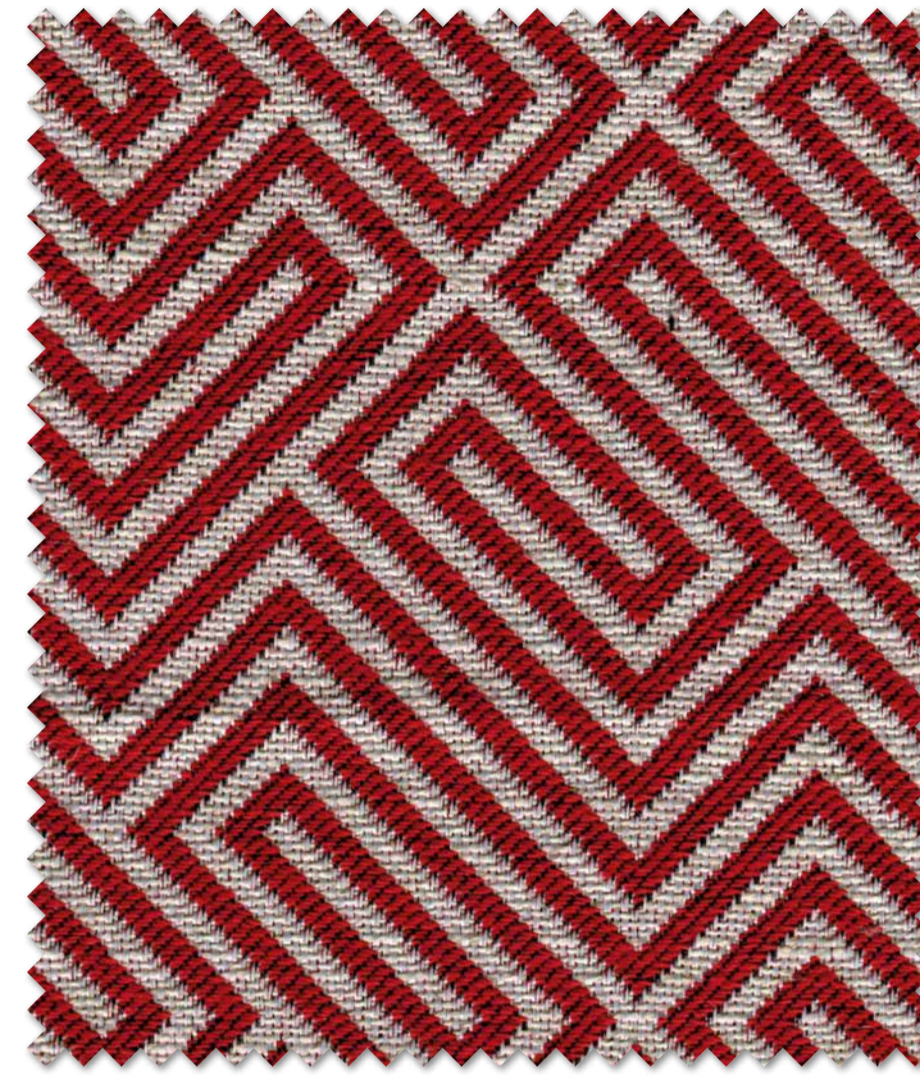
PINEDA 6



MONTINI 5



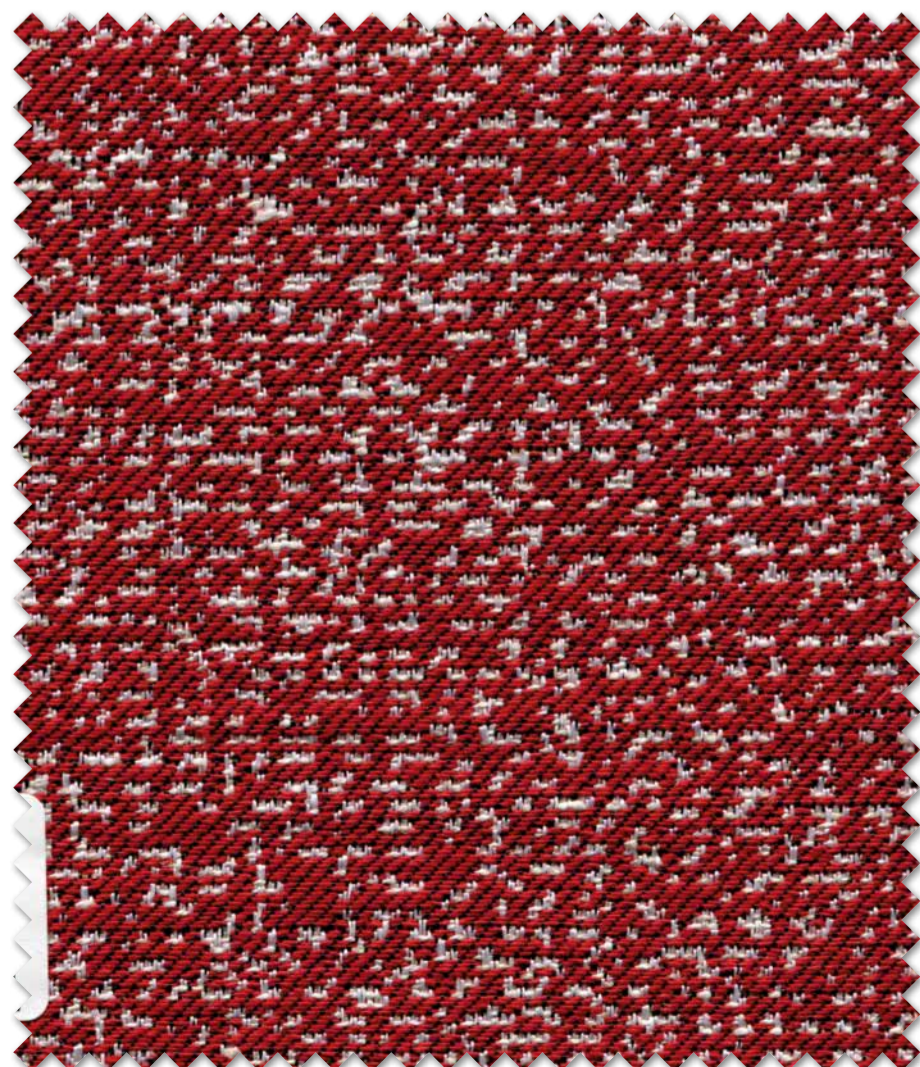
QUEEN VELVET 23



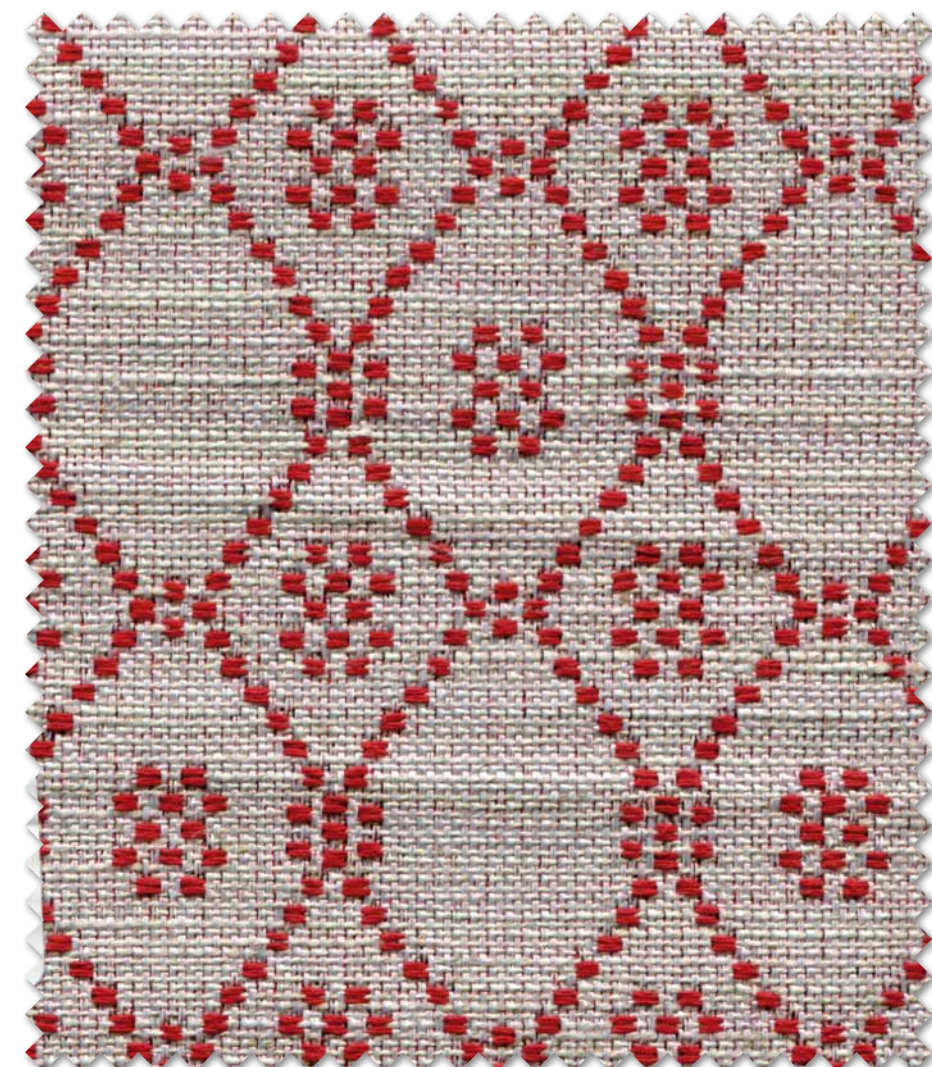
NOVARA 5



COMO 5



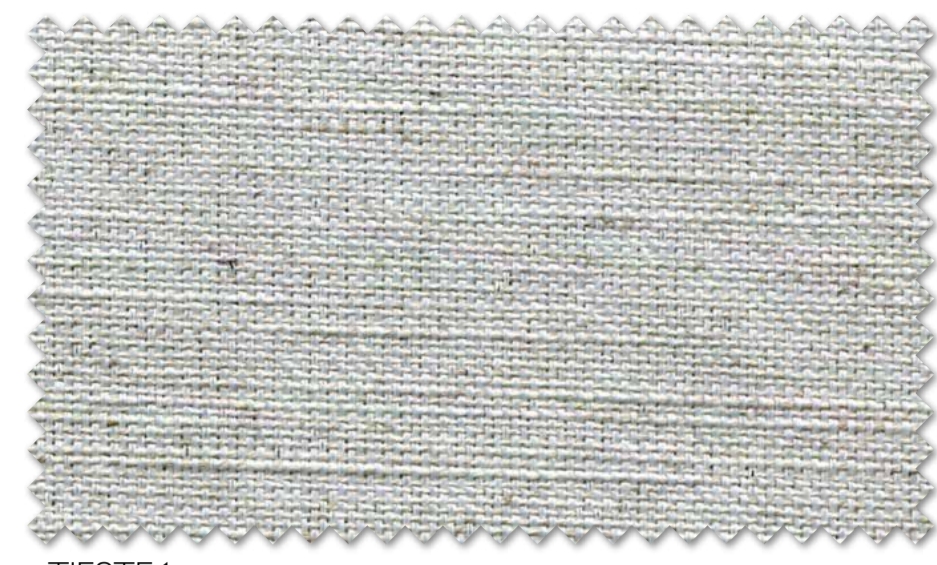
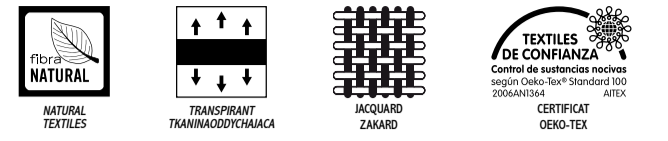
BARI 5



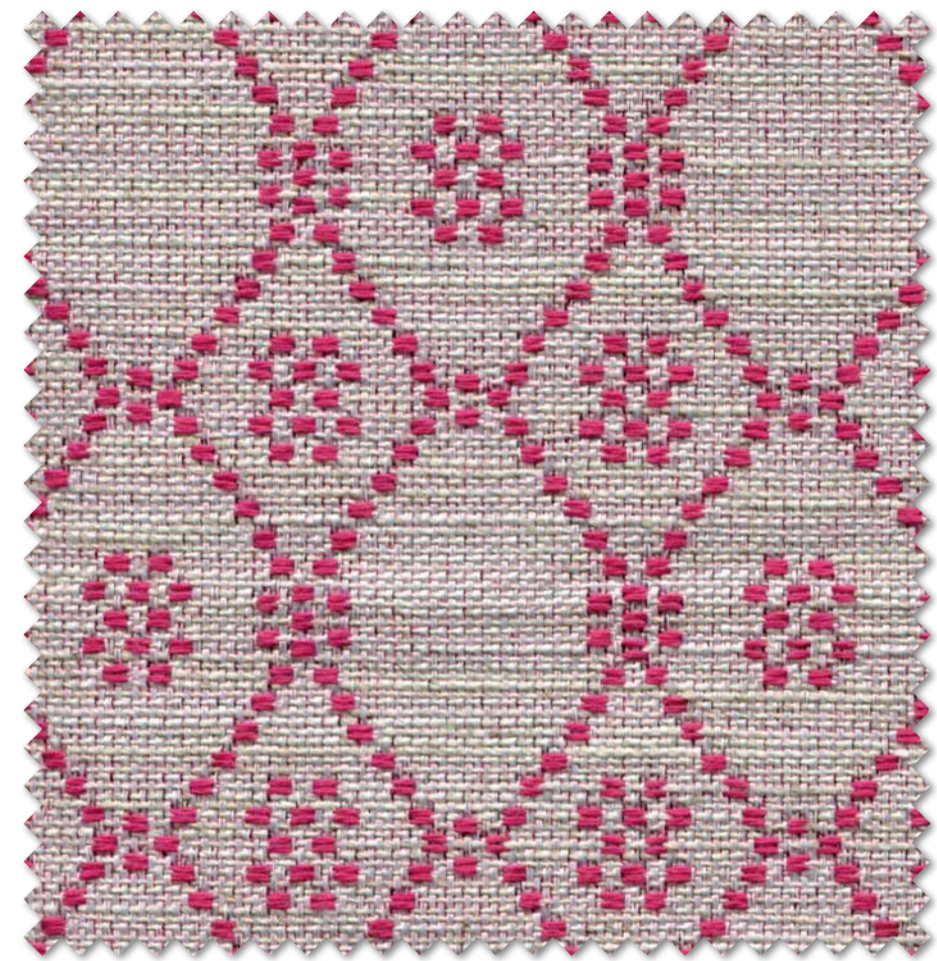
SAVONA 5



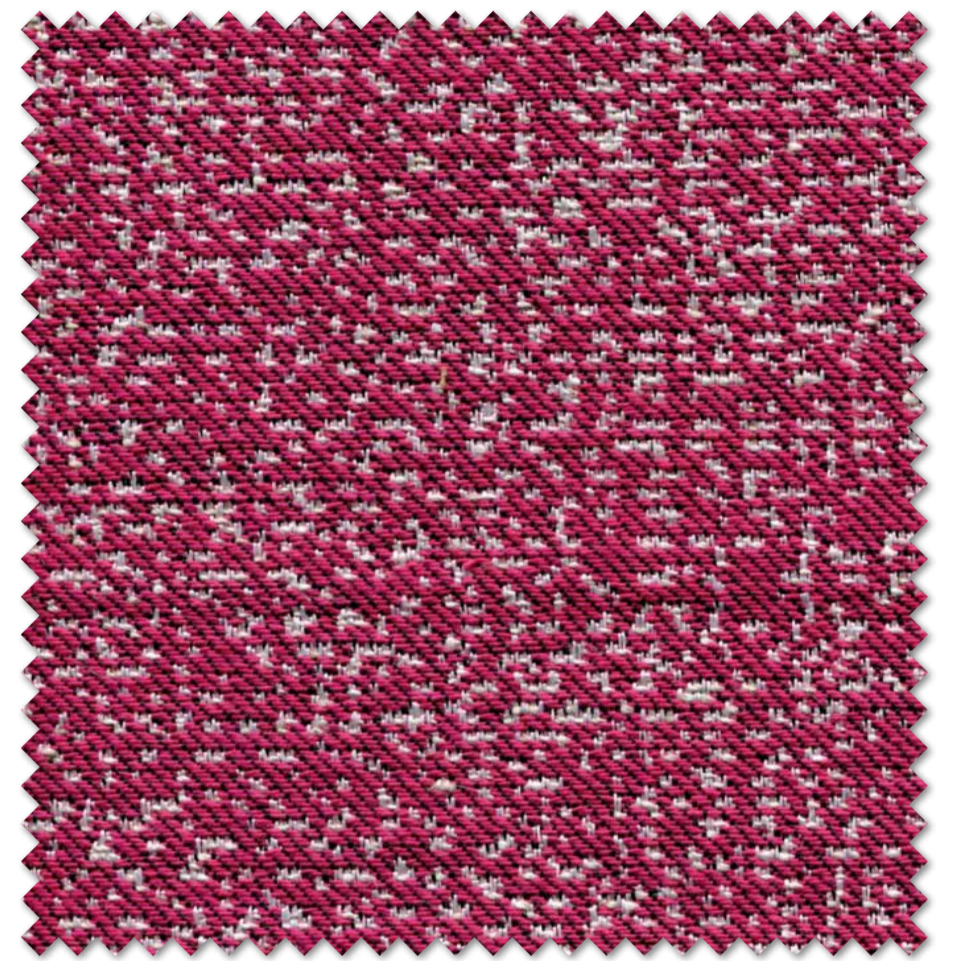
TRIESTE 1



TIESTE 1



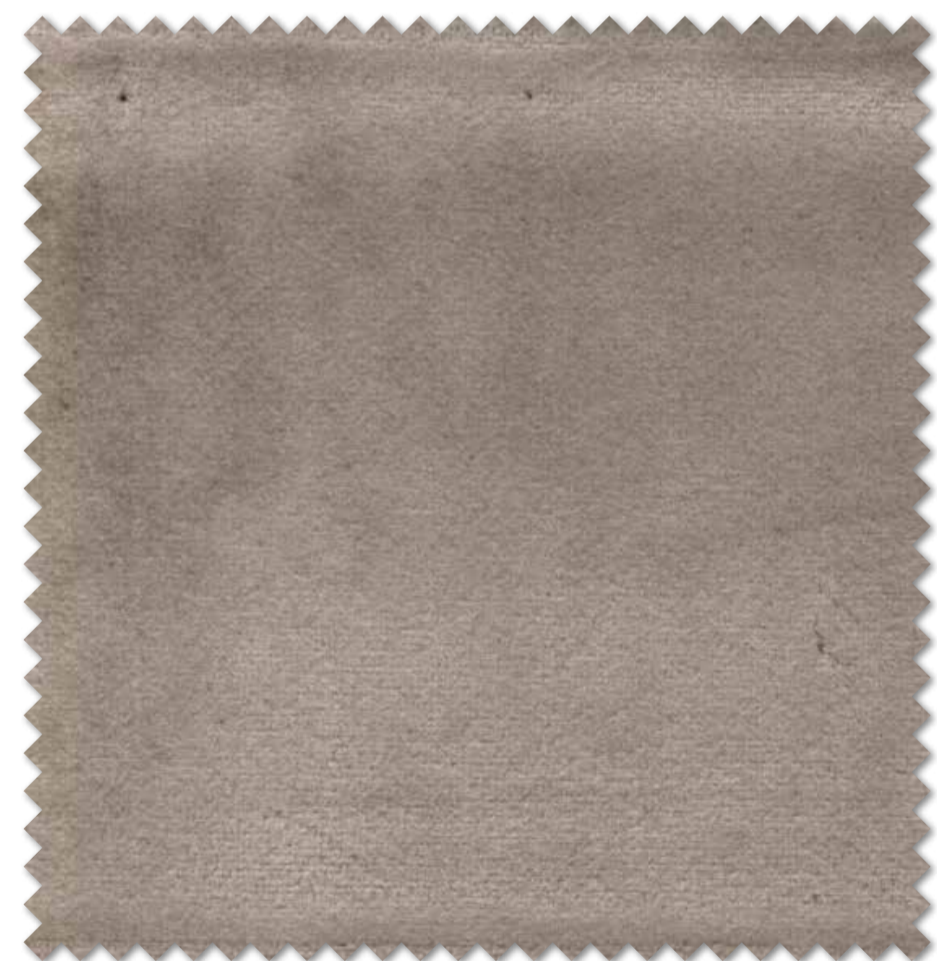
SAVONA 6



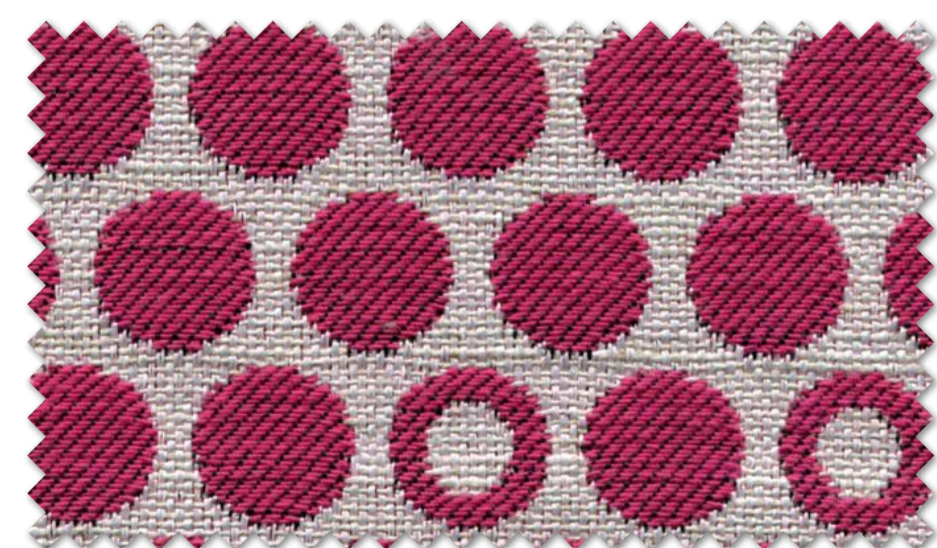
BARI 6



NOVARA 6



QUEEN VELVET 3



COMO 6



PIANORD 6

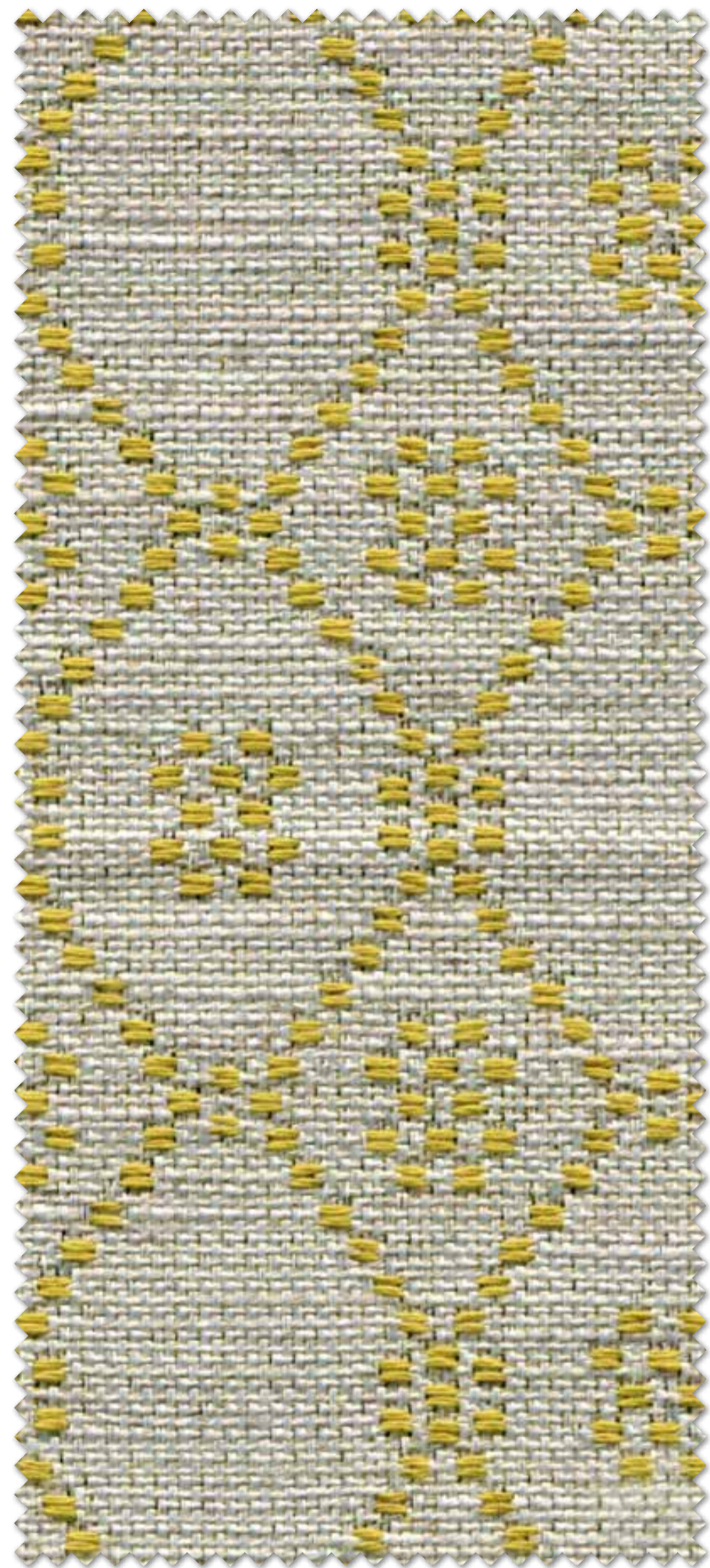
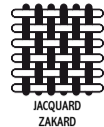
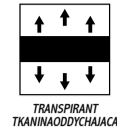


QUEEN VELVET 26



MONTINI 6

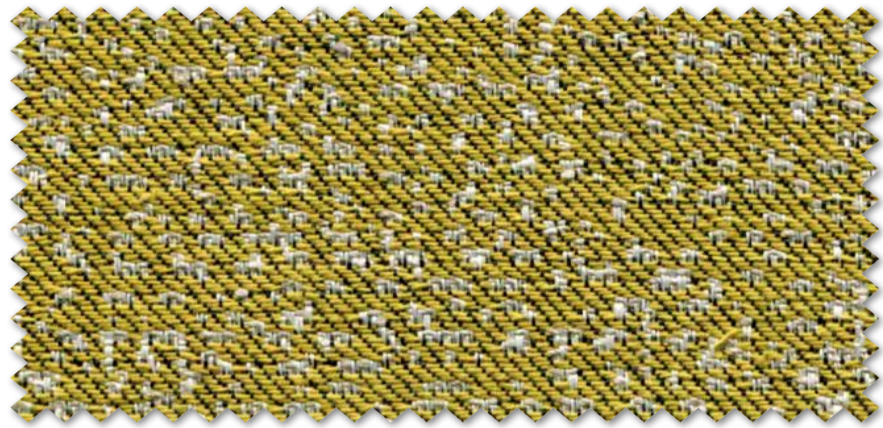




SAVONA 7



QUEEN VELVET 41



BARI 7



PIANORD 7

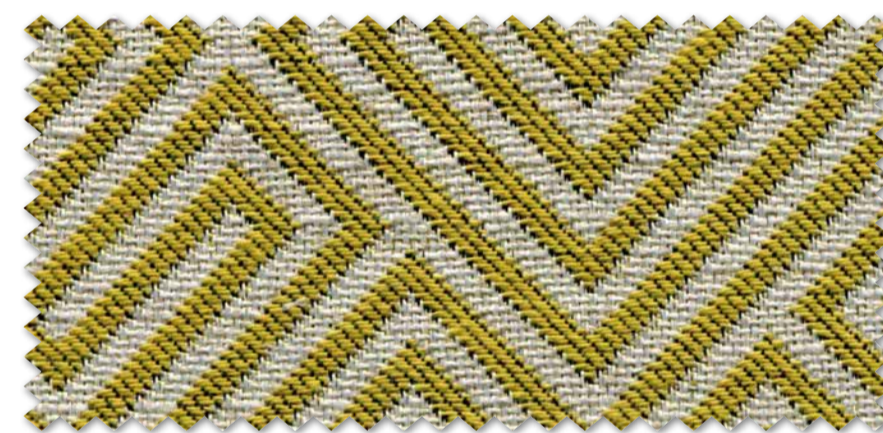


PINEDA 5



COMO 7

QUEEN 2



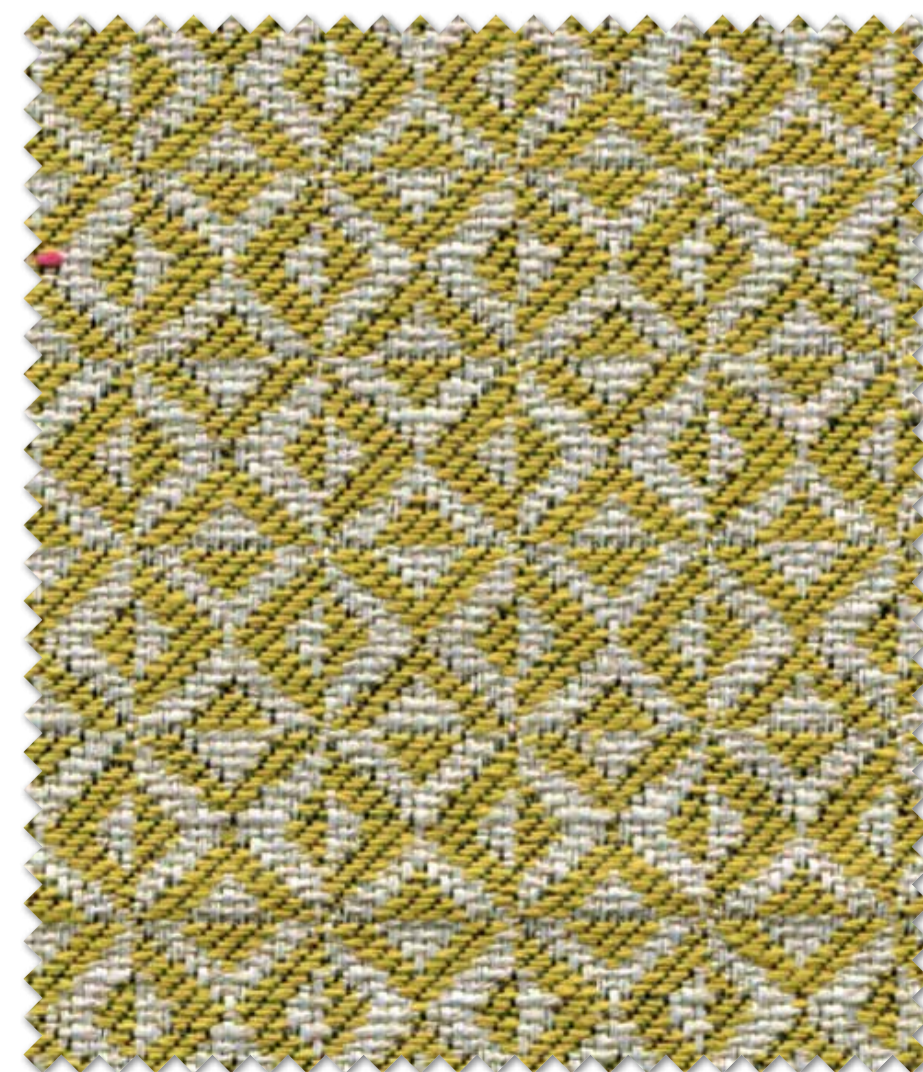
NOVARA 7



QUEEN VELVET 2



COMO 7



MONTINI 7



TRIESTE 1



TRIESTE 1



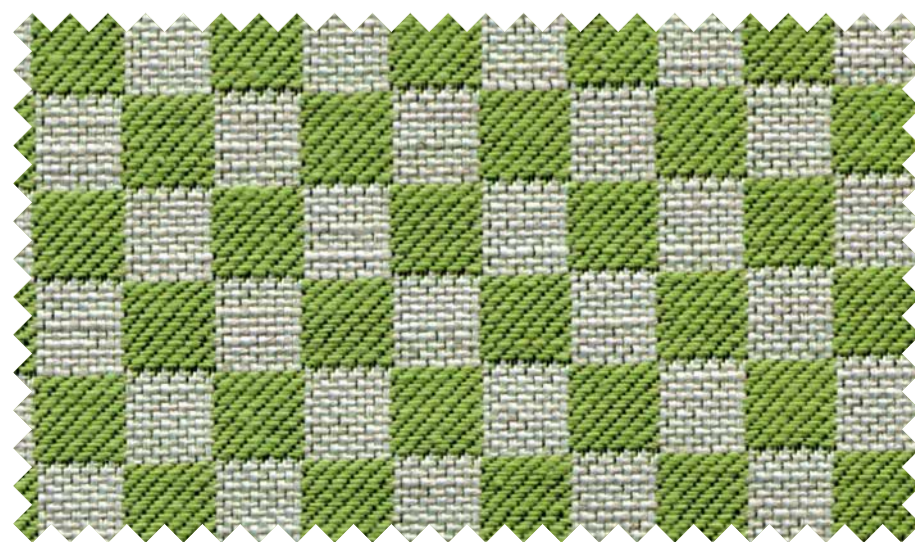
COMO 8



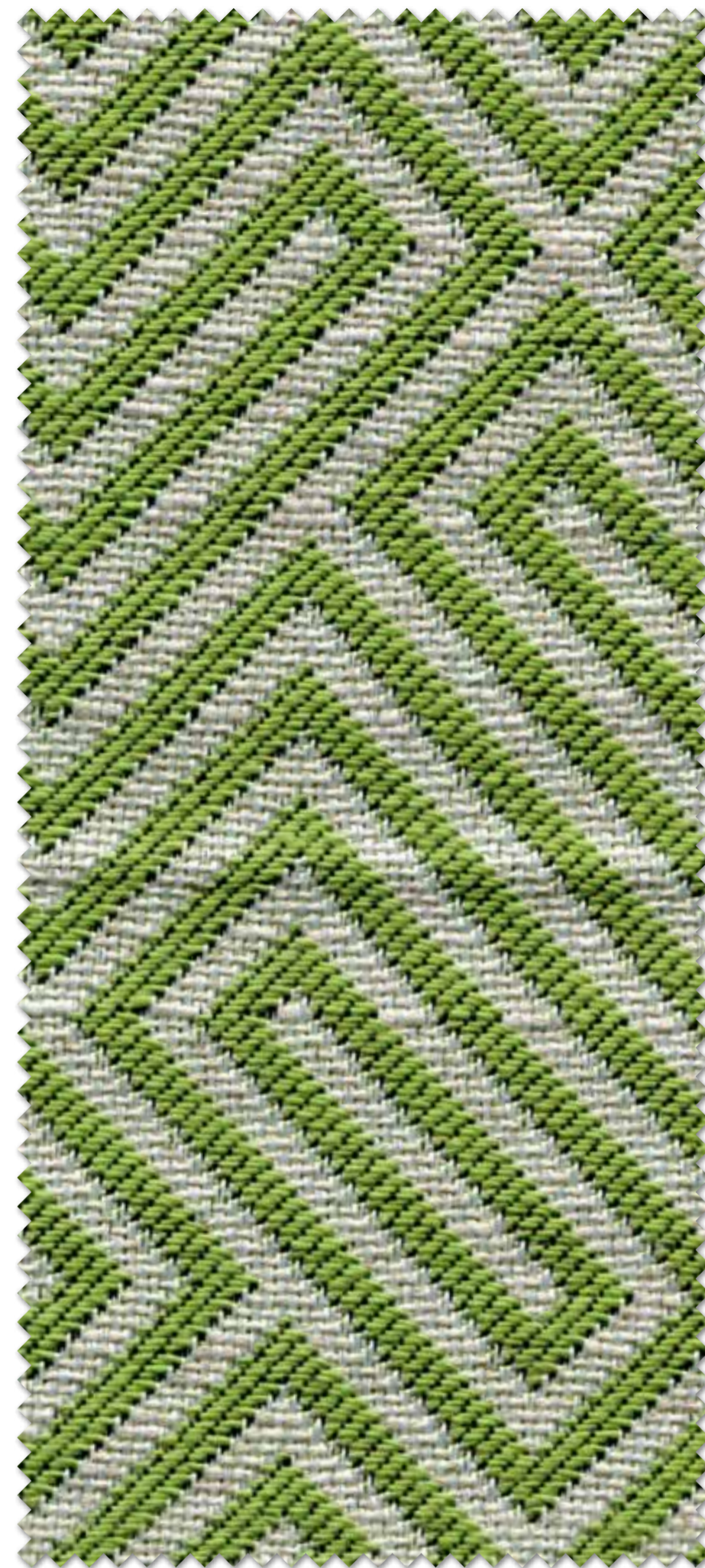
QUEEN VELVET 44



SAVONA 8



PIANORD 8



NOVARA 8



NOVARA 8



QUEEN 43

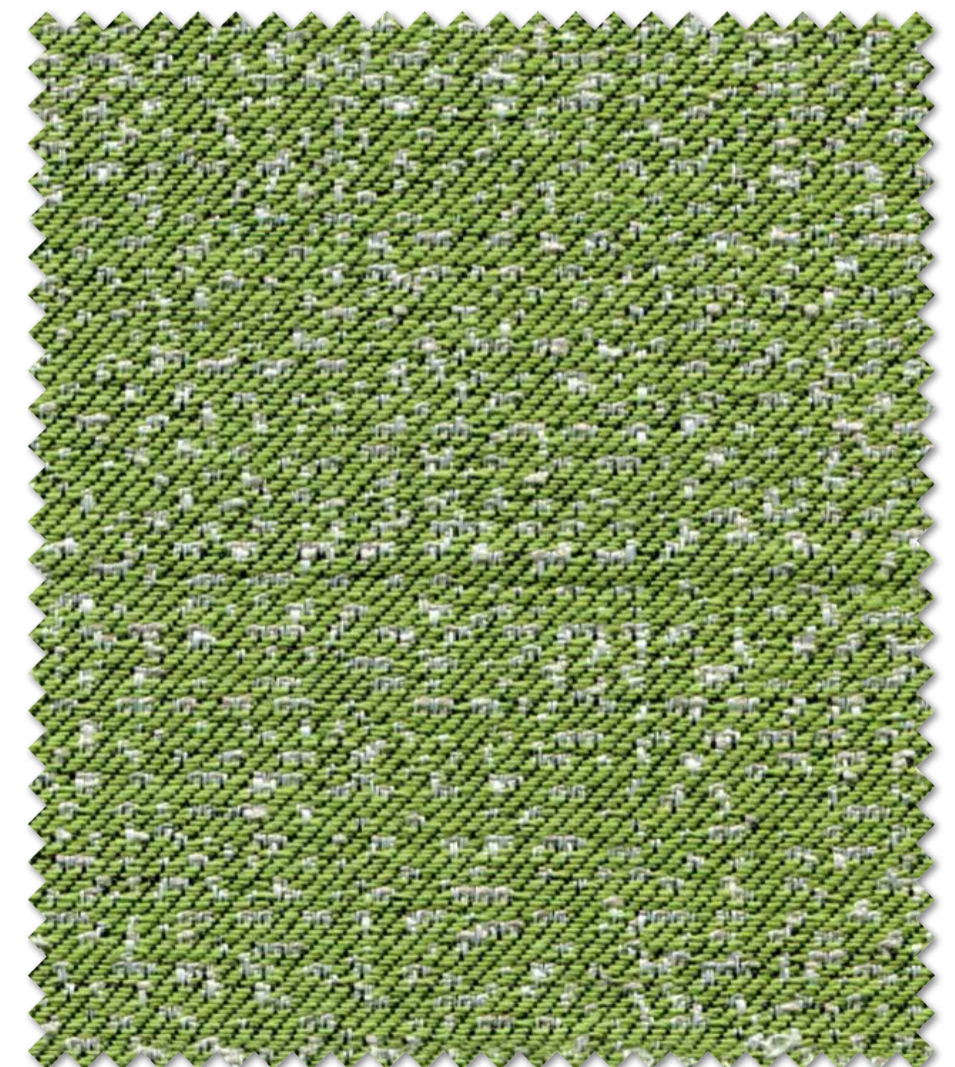
QUEEN 43



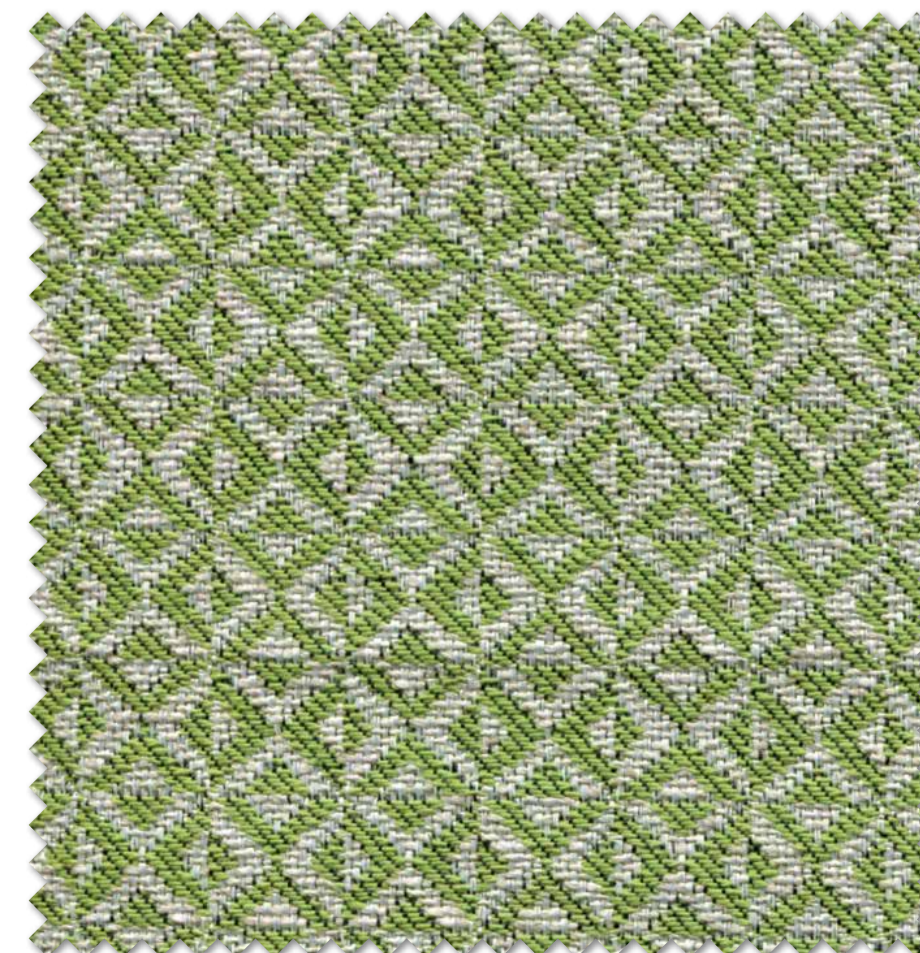
QUEEN VELVET 43



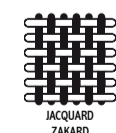
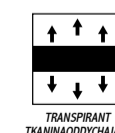
QUEEN VELVET 6



BARI 8



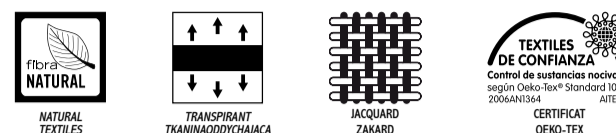
MONTINI 8





SAVONA 9

PINEDA 9



QUEEN VELVET 39



PIANORD 9



COMO 9



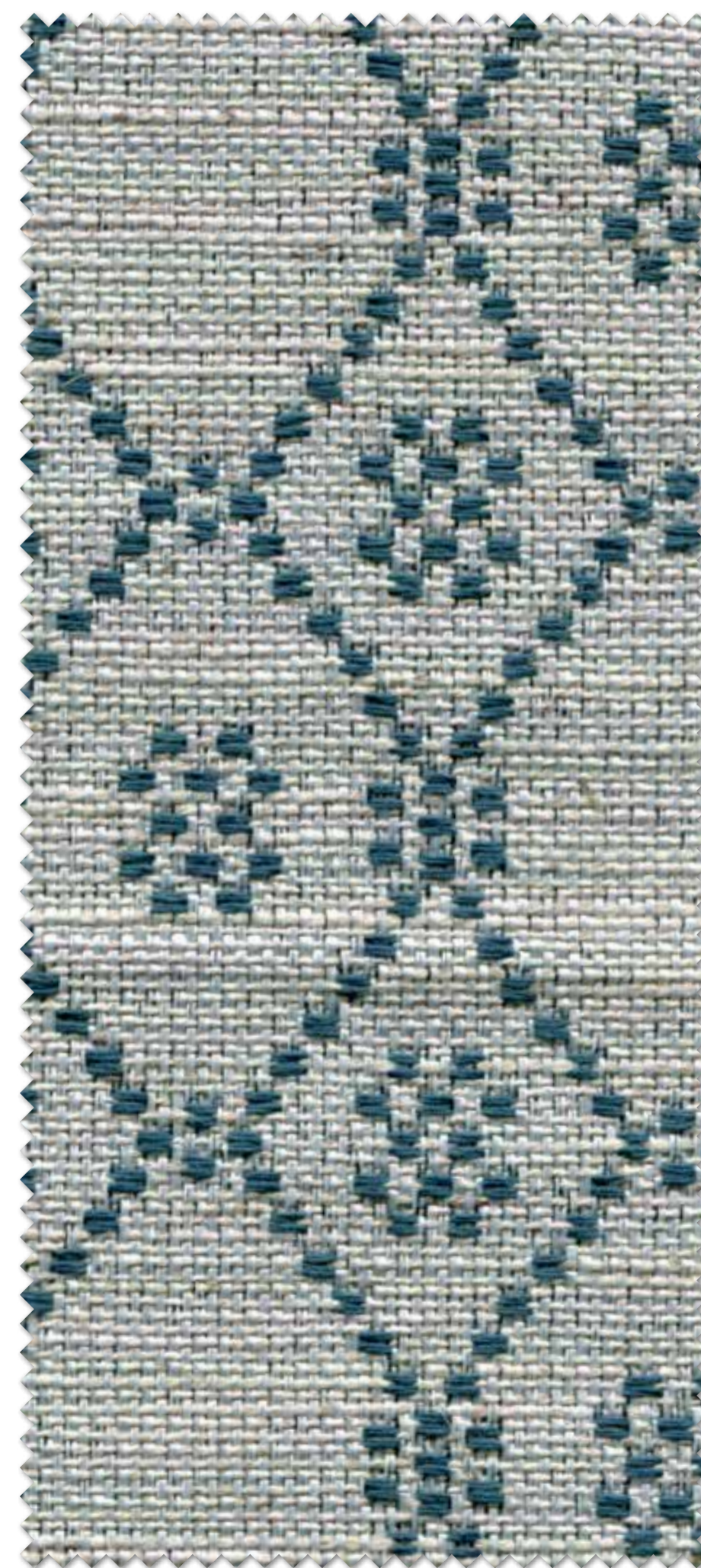
PINEDA 9



NOVARA 9



MONTINI 9



SAVONA 9



COMO 9

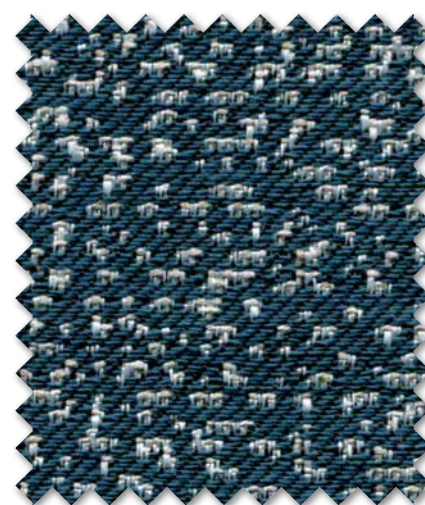
PINEDA 9



QUEEN VELVET 40



QUEEN VELVET 41



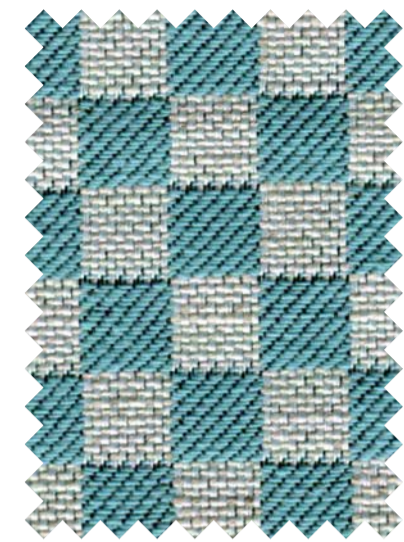
BARI 9



TRIESTE 1



GLORMEB GROUP



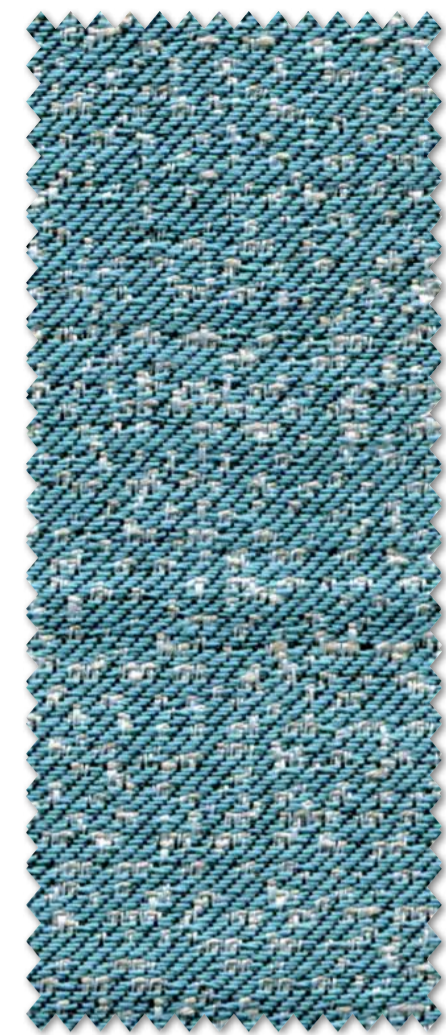
PIANORD 10



QUEEN VELVET 34



COMO 10



BARI 10



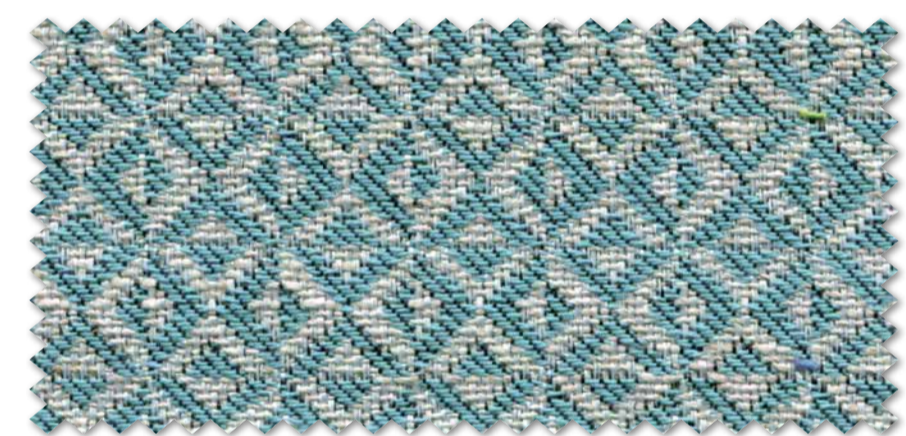
SAVONA 10



QUEEN VELVET 36



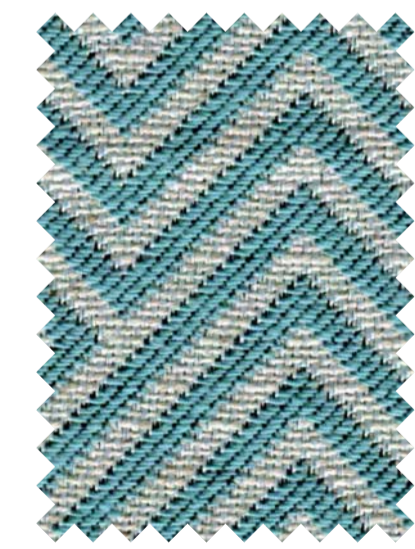
TRIESTE 1



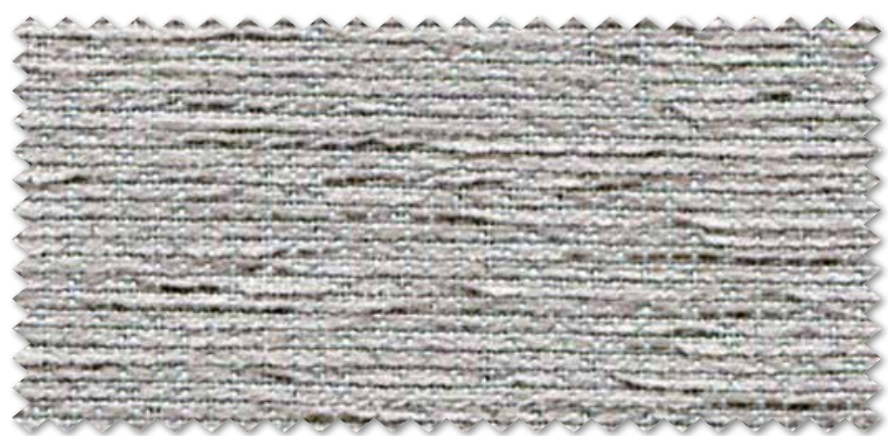
MONTINI 10



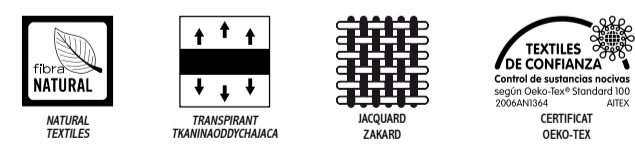
QUEEN VELVET 6



QUEEN VELVET 10



PINEDA 11

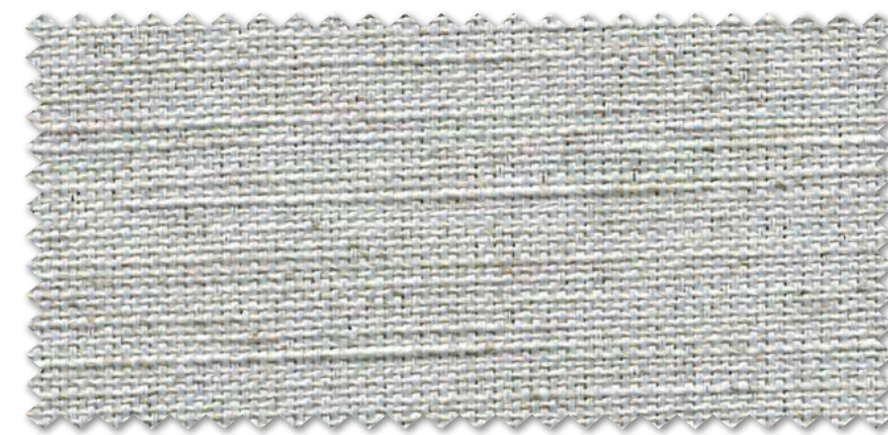


GLORMEB GROUP





NOVARA 12



TRIESTE 1



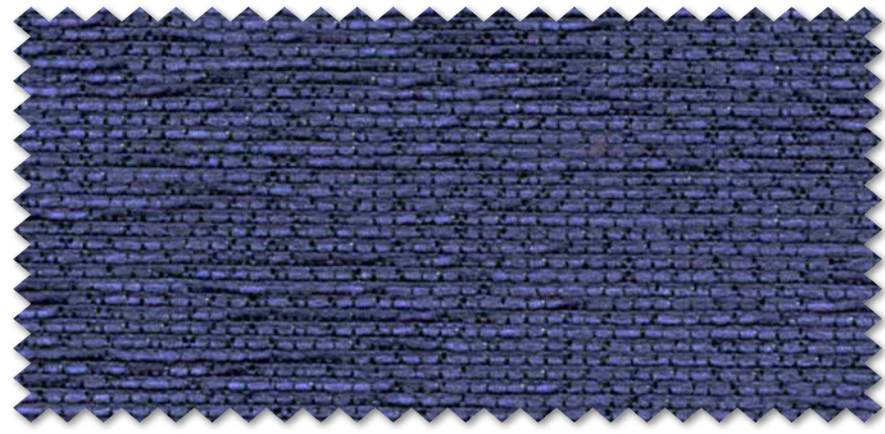
BARI 12



SAVONA 12



QUEEN VELVET 5



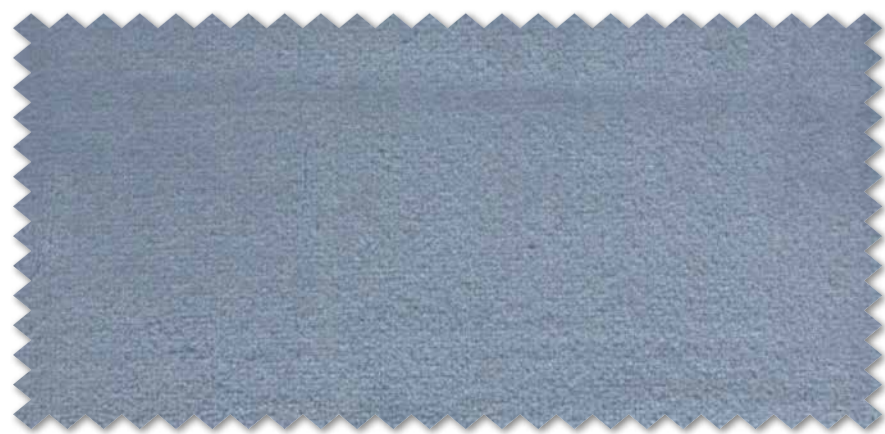
PINEDA 10



COMO 12



TRIESTE 1



QUEEN VELVET 34



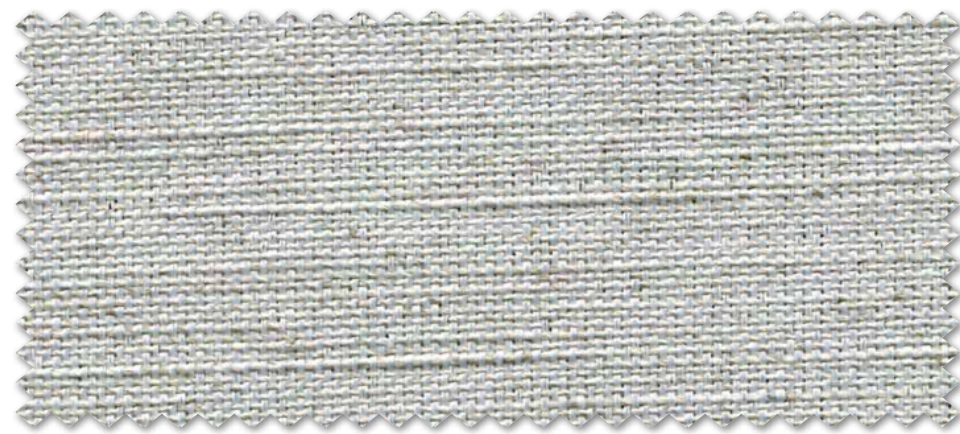
MONTINI 12



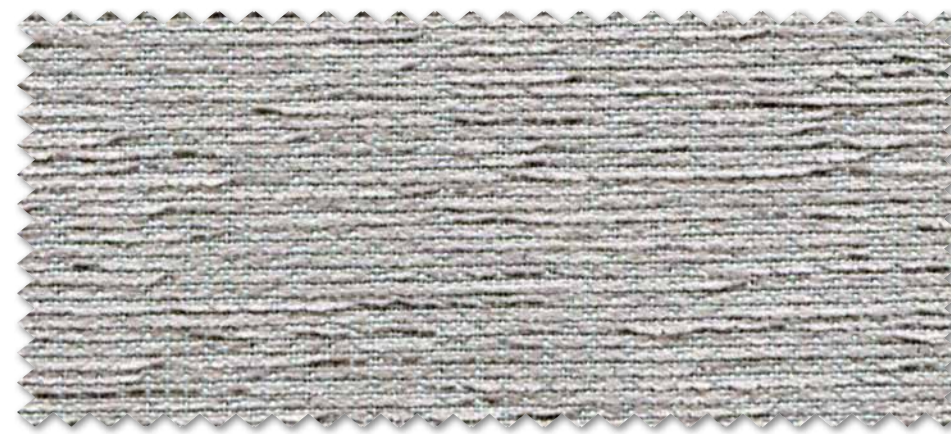
NOVARA 12



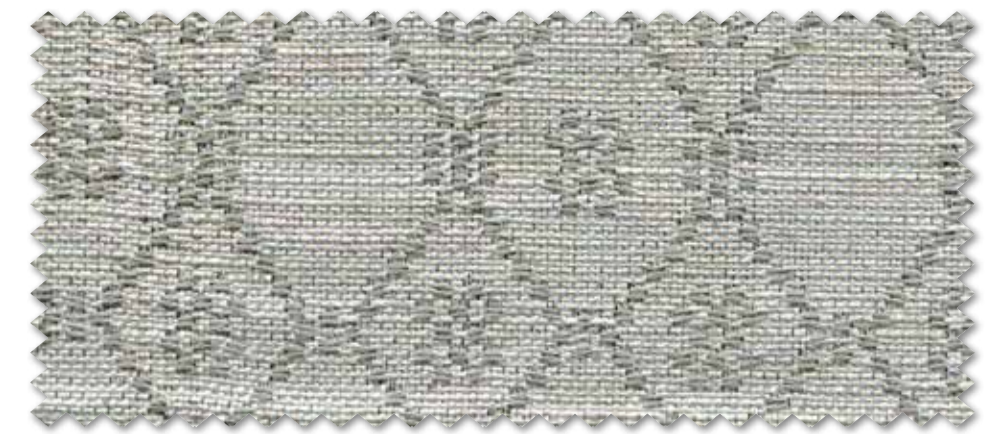
QUEEN 34



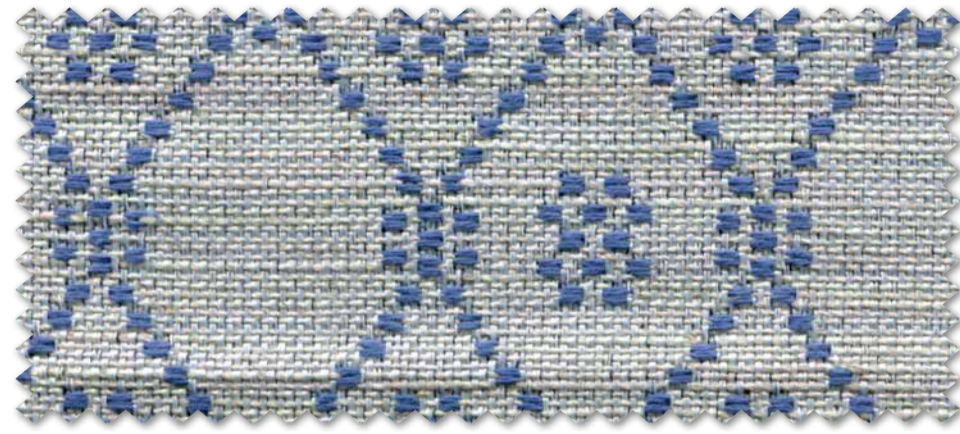
TRIESTE 1



PINEDA 11



SAVONA 13



SAVONA 11



NOVARA 13



QUEEN VELVET 3



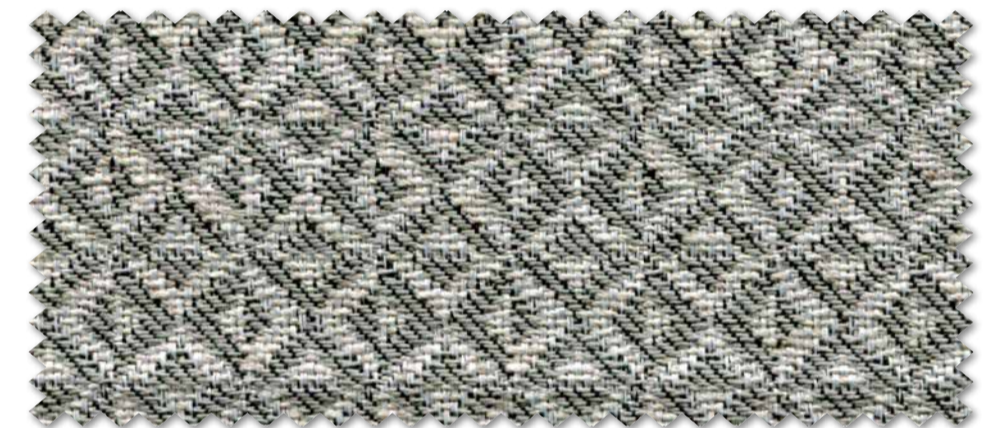
QUEEN VELVET 5



NOVARA 11



PINEDA 10



MONTINI 13



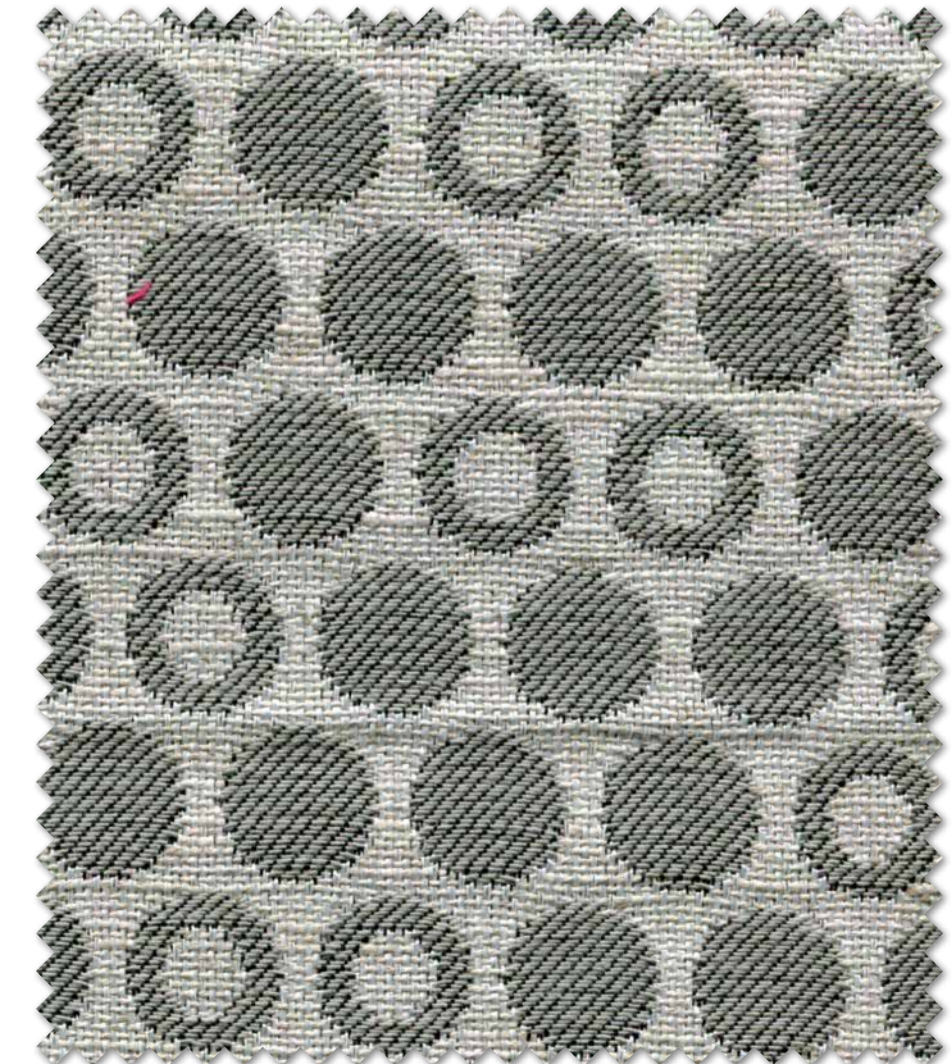
QUEEN VELVET 32



QUEEN VELVET 35



COMO 11



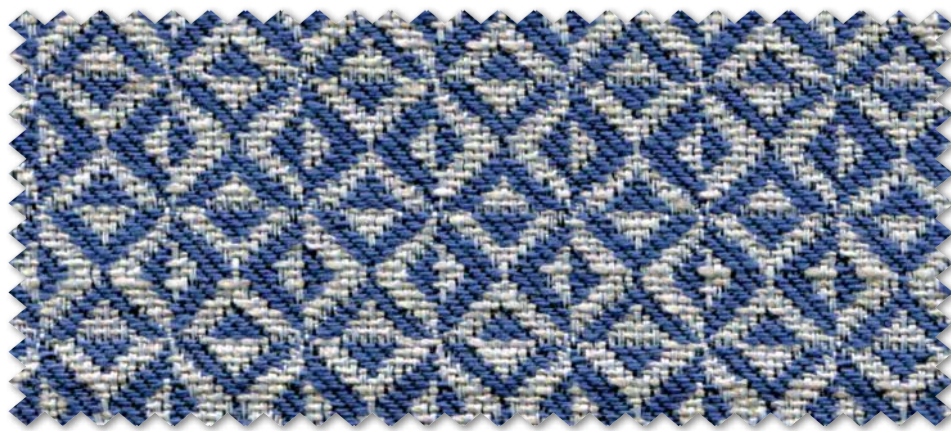
COMO 13



PIANORD 13



BARI 13



MONTINI 11



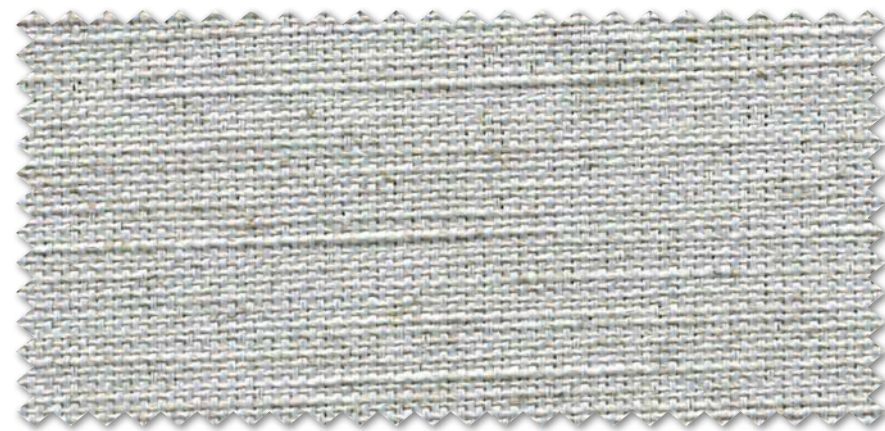
PIANORD 11



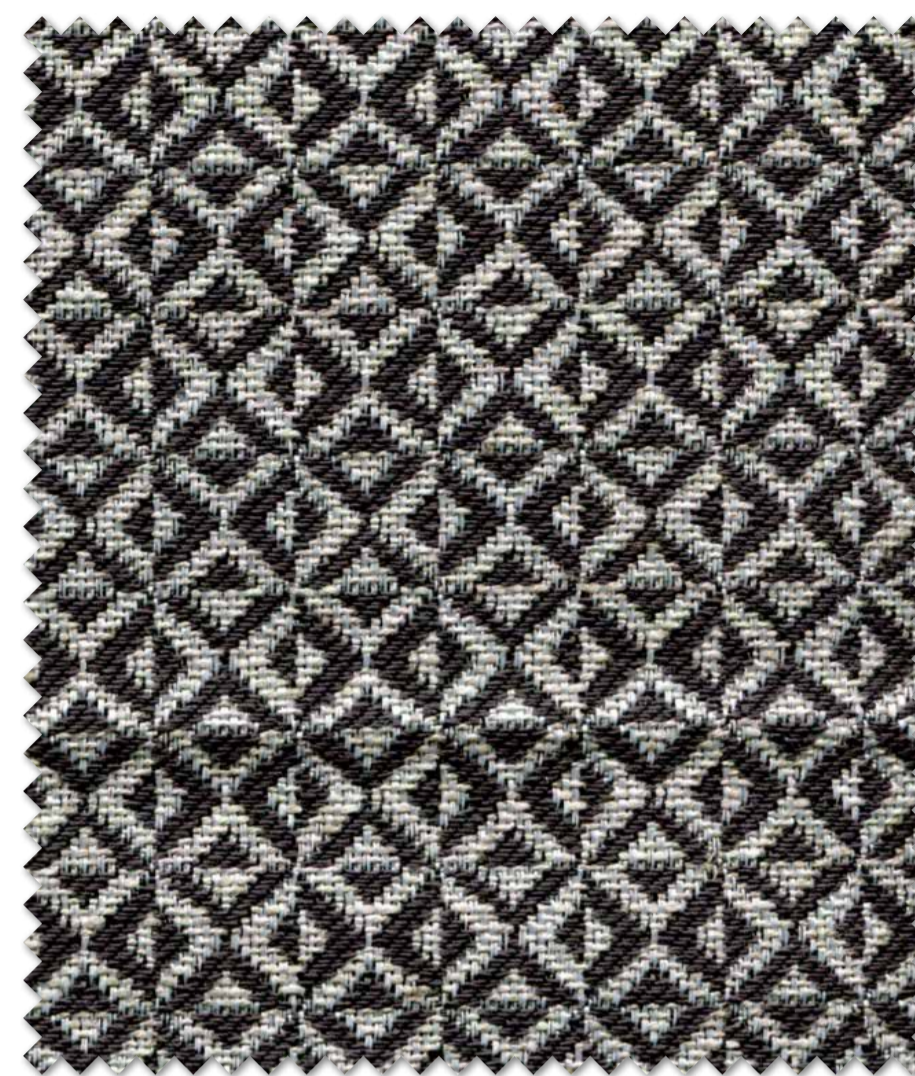
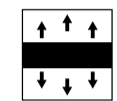
BARI 11



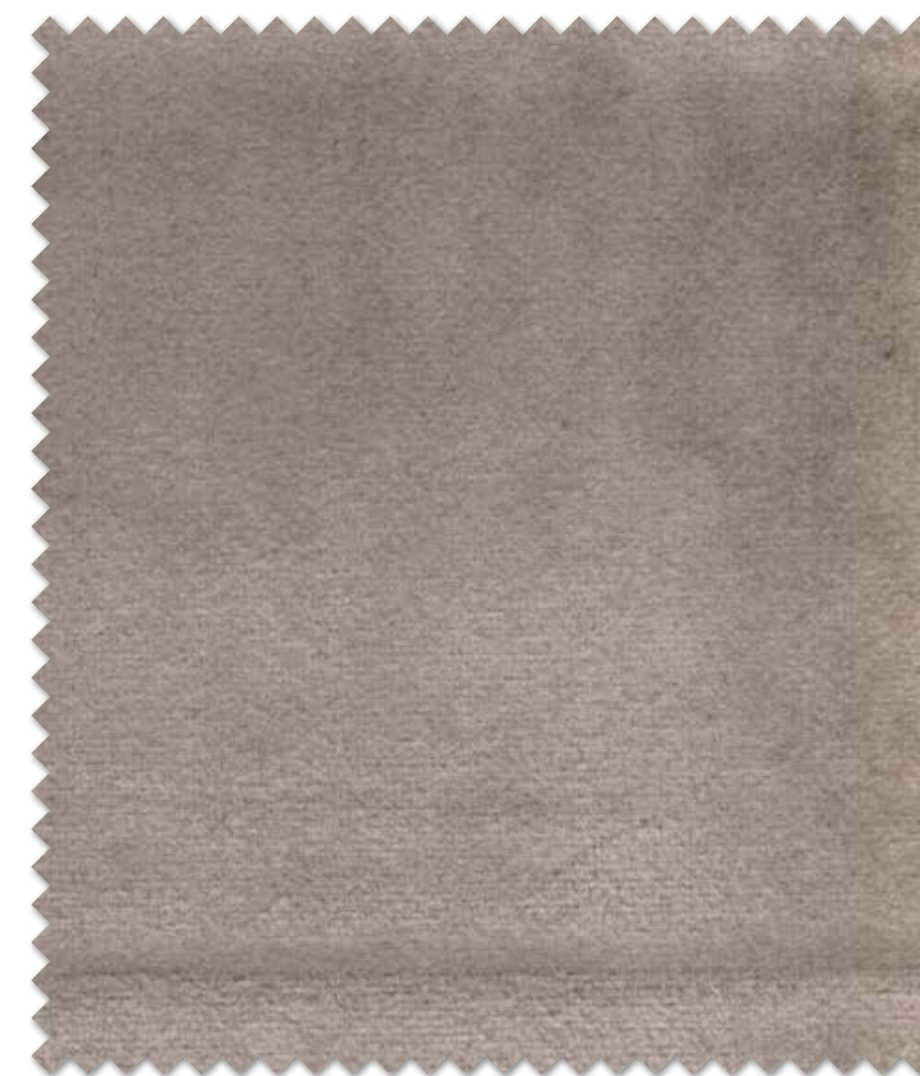
COMO 14



TRIESTE 1



MONTINI 14



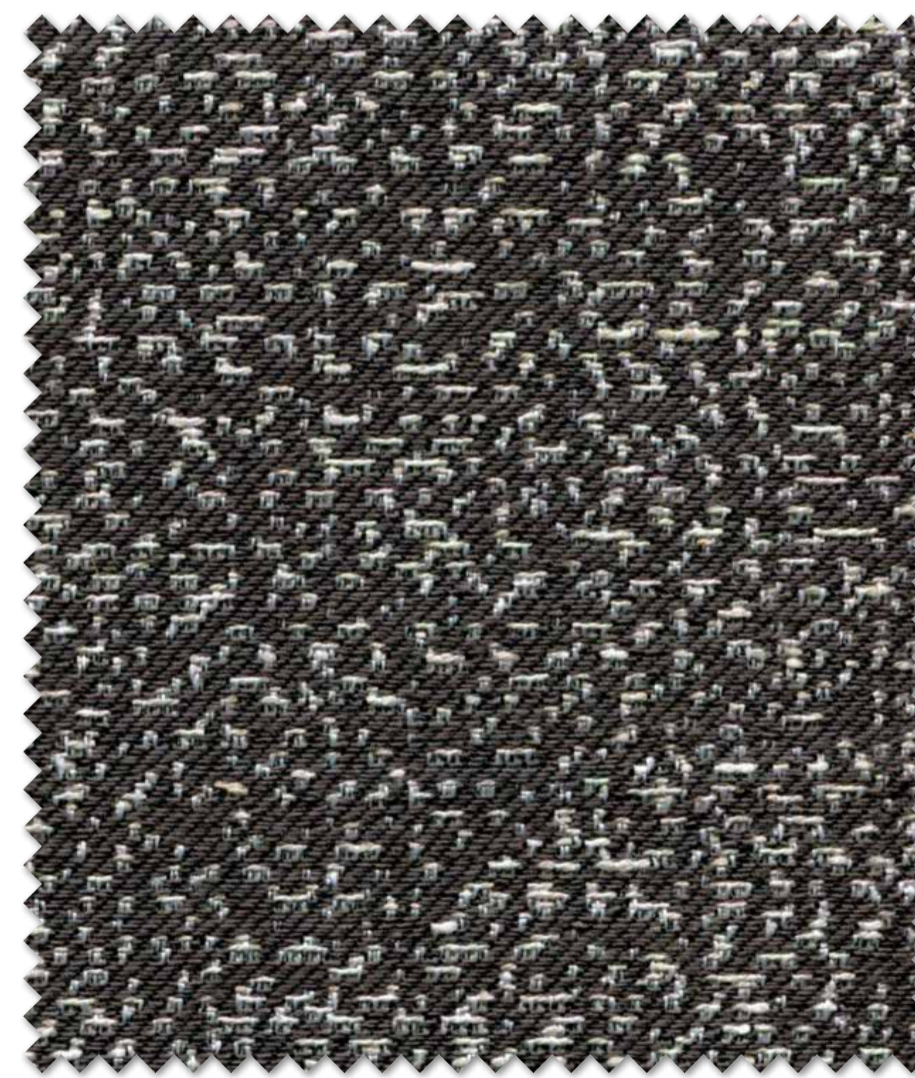
QUEEN VELVET 3



QUEEN VELVET 41



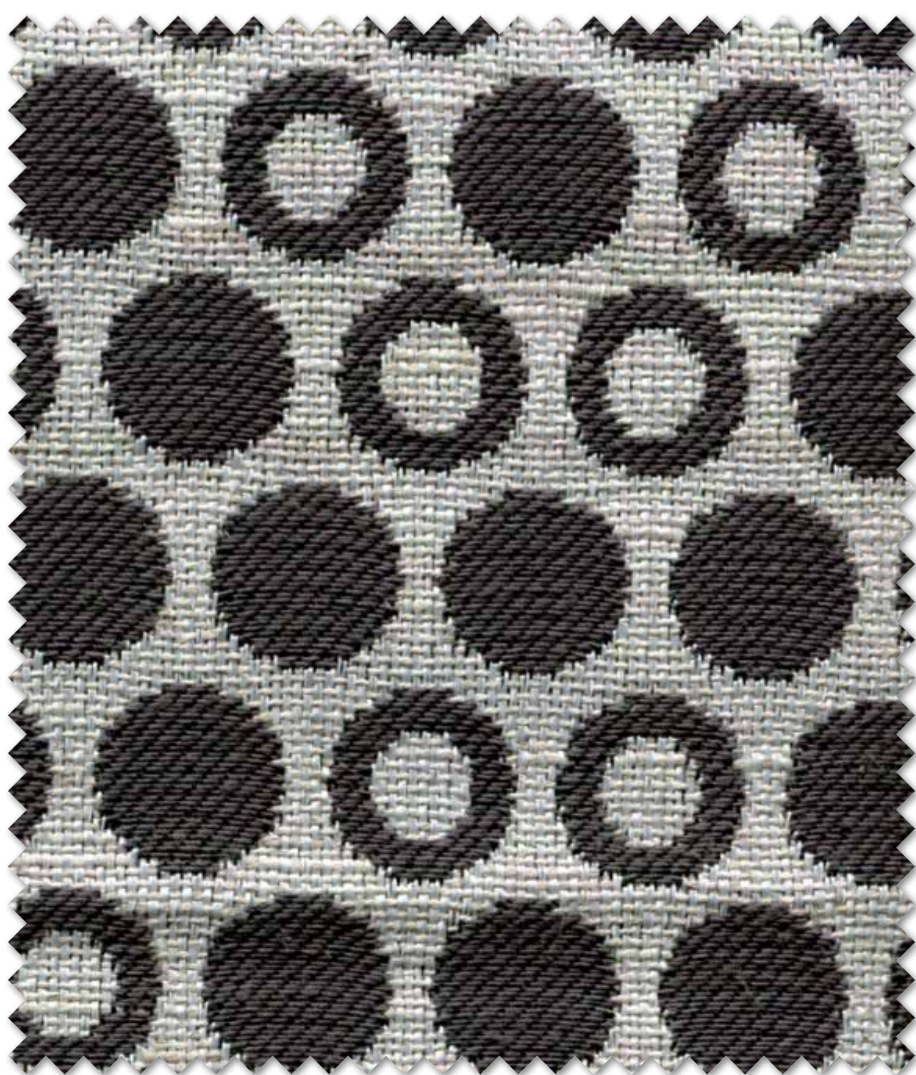
PINEDA 14



BARI 14



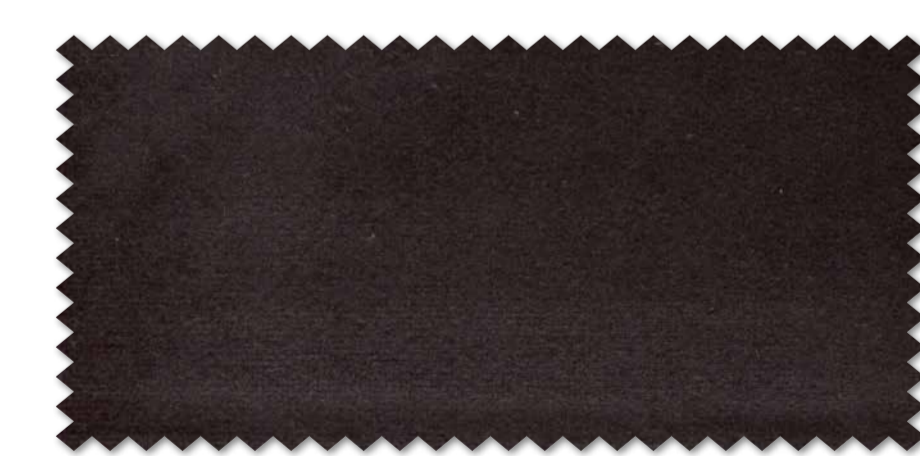
NOVARA 14



COMO 14



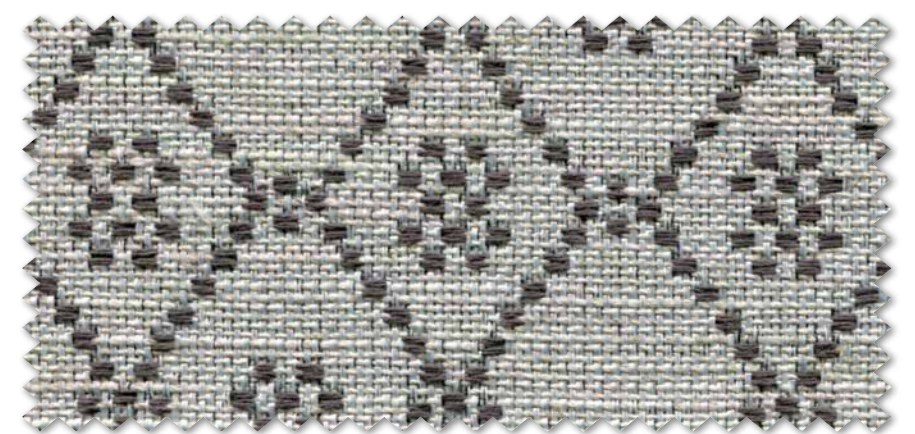
PIANORD 14



QUEEN VELVET 1



QUEEN VELVET 2

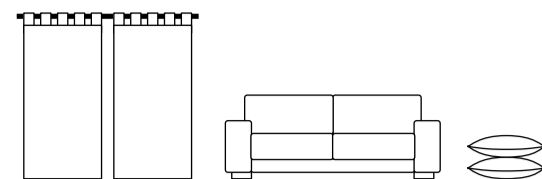


SAVONA 14



# DANE TECHNICZNE.

technical specifications.



## savona. montini. bari. trieste. novara. pianord. como

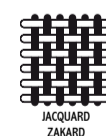
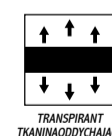
SKŁAD SUROWCOWY Composition	30% COT. 30% PES. 25% VIS. 15%LI.	
SZEROKOŚĆ Width	140 cm / 54 in.	
WAGA Weight	470 gr/m <sup>2</sup> - 660 gr/ml	
WYTRZYMAŁOŚĆ TKANINY Tear strenght	Osnowa Warp. Chłone 3.2 mm Watek Weft. Trame 2.8 mm	BS 3320:1988 BS 2543:1995
WYTRZYMAŁOŚĆ TKANINY Seam strenght	> 35.000 Ciclos Cycles Cycles	BS 5690 BS 2543:1995
ODPORNOŚĆ KOLORU NA ŚWIATŁO Colour fastness to light	5	UNE 40187 BS 1006-B02
ODPORNOŚĆ NA PRANIE CHEMICZNE Rubbing solvents	4-5	ISO 105-D01 UNE 40099
ODPORNOŚĆ NA CZYSZCZENIE Rubbing fastness in humid state	4-5	ISO 105-C06 UNE 40029
ODPORNOŚĆ NA MECHACENIE Pilling resistance	4	ISO/DIS 12945-2
IPRZEPIS PRANIA Washing instructions		

## queen velvet.

SKŁAD SUROWCOWY Composition	100% PES.	
SZEROKOŚĆ Width	140 cm / 54 in.	
WAGA Weight	290 gr/m <sup>2</sup> - 406 gr/ml	
WYTRZYMAŁOŚĆ TKANINY Seam strenght	> 50.000 Ciclos Cycles Cycles	BS 5690 BS 2543:1995
WYTRZYMAŁOŚĆ TKANINY Tear strenght	Osnowa Warp. Chłone 110N Watek Weft. Trame 130N	EN ISO 13937-3:2001 EN ISO 13937-3:2001
ODPORNOŚĆ KOLORU NA ŚWIATŁO Colour fastness to light	5	EN ISO 105 B02:1994
ODPORNOŚĆ NA PRANIE CHEMICZNE Rubbing solvents	4-5	EN ISO 105X12:2001
ODPORNOŚĆ NA CZYSZCZENIE Rubbing fastness in humid state	4-5	ISO105X12:2001
ODPORNOŚĆ NA MECHACENIE Pilling resistance	4-5	ISO12945-2
IPRZEPIS PRANIA Washing instructions		

## pineda.

SKŁAD SUROWCOWY Composition	55% Algodón Cotton Cotton 45% Poliéster Polyester Polyester	
SZEROKOŚĆ Width	140 cm / 54 in.	
WAGA Weight	450 gr/m <sup>2</sup> - 630 gr/ml	
WYTRZYMAŁOŚĆ TKANINY Seam strenght	Osnowa Warp. Chłone 3 mm Watek Weft. Trame 2.8 mm	BS 3320:1988 BS 2543:1995
WYTRZYMAŁOŚĆ TKANINY Tear strenght	> 40.000 Ciclos Cycles Cycles	BS 5690 BS 2543:1995
ODPORNOŚĆ KOLORU NA ŚWIATŁO Colour fastness to light	5	UNE 40187 BS 1006-B02
ODPORNOŚĆ NA PRANIE CHEMICZNE Rubbing solvents	4-5	ISO 105-D01 UNE 40099
ODPORNOŚĆ NA CZYSZCZENIE Rubbing fastness in humid state	4-5	ISO 105-C06 UNE 40029
ODPORNOŚĆ NA MECHACENIE Pilling resistance	5	ISO/DIS 12945-2
IPRZEPIS PRANIA Washing instructions		



## PRZEPIS PRANIA.

washing instructions



PRANIE RĘCZNE W MAX. 30° C  
UŻYWAJ TYLKO NEUTRALNYCH  
DETERGENTÓW

Hand wash, maximum 30° C with  
neutral detergents.



NIE UŻYWAĆ  
WYBIELACZY

Do not use bleach.



PRASOWAĆ NA  
ODWROTNEJ STRONIE  
W MAX.110° C

Iron only on the rear side,  
at a maximum of 110°.



MOŻNA RÓWNIEŻ  
PRĄC CHEMICZNIE

Dry cleaning can also  
be used.



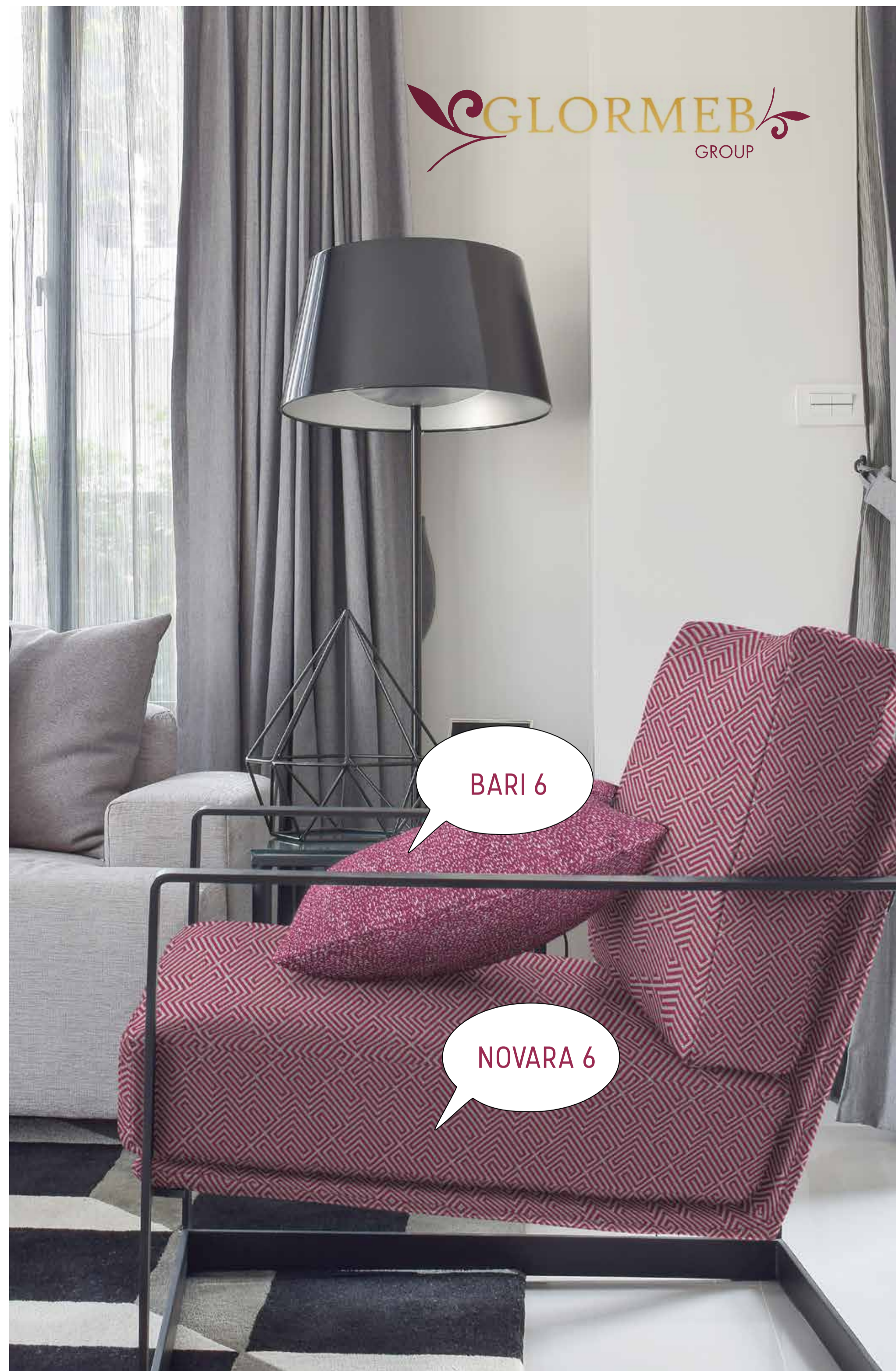
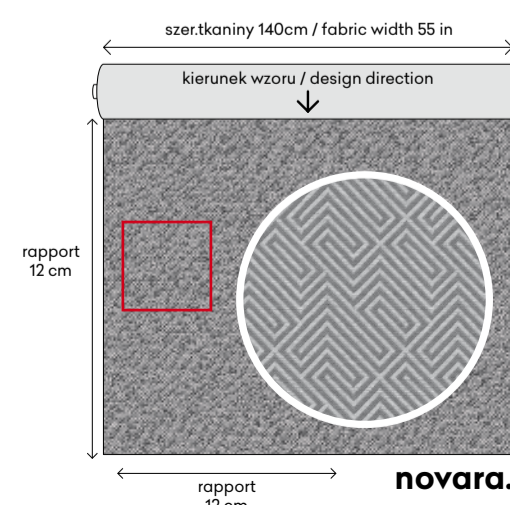
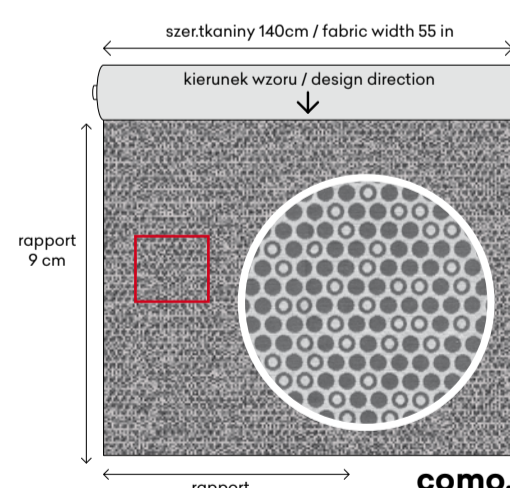
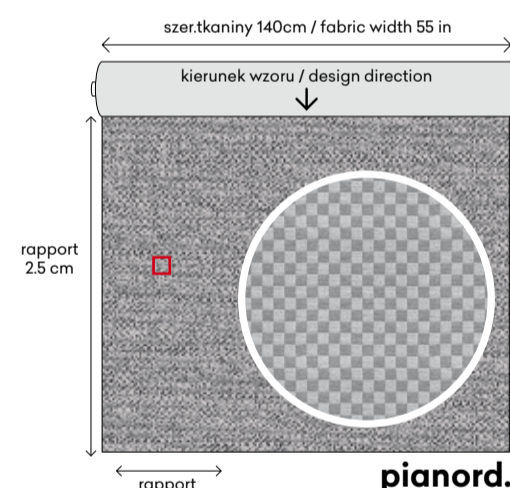
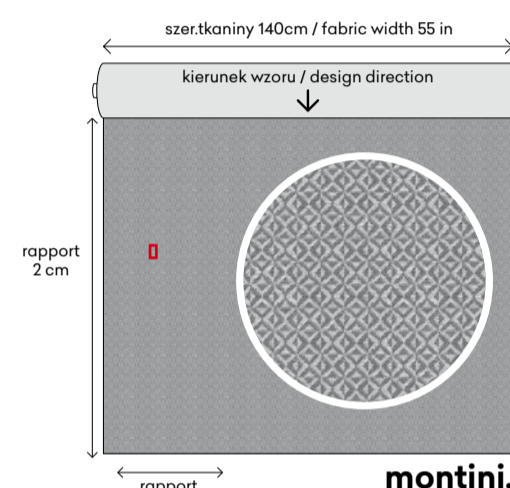
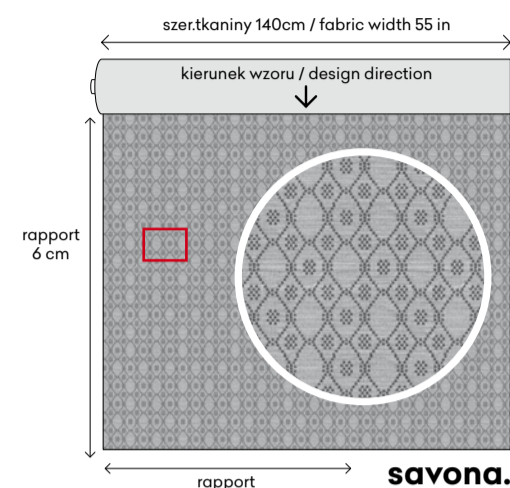
NIE  
ODWIROWYWAĆ

Do not tumble dry.



UNIKAĆ SUSZENIA  
NA SŁOŃCU

Avoid drying in  
the sun.





PERFECT  
FABRICS.



GLORMEB GROUP · UL. OGRODNICZA 63 · NOWE BABICE 05-082  
TEL.: +48 22 8538421 · FAX: +48 22 8479738 · [biuro@glormebgroup.pl](mailto:biuro@glormebgroup.pl)

[www.glormebgroup.pl](http://www.glormebgroup.pl)