

PRODUCTO FABRICADO EN ESPAÑA PRODUCT MADE IN SPAIN PRODUIT FABRIQUÉ EN ESPAGNE

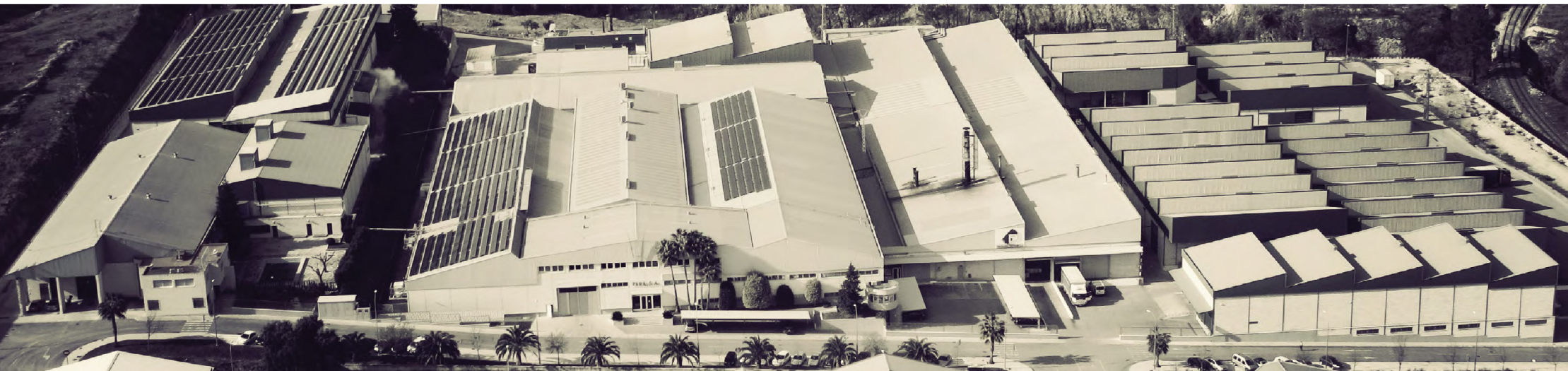


PIEL, S.A. - Avda. Del Centre de Mirca, 6 - 46890 AGUILLENT - SPAIN  
+34 962 907 400  
info@pielsa.es

Dubai collection

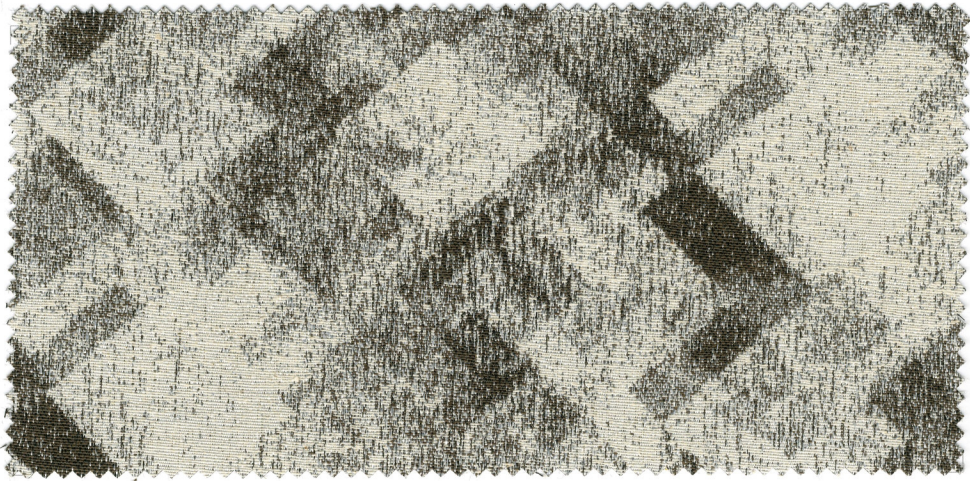


Dubai collection



Piel SA, fundada en 1976, es una empresa textil con una área de producción de más de 70.000m<sup>2</sup>, certificada por SGS para la Norma de Calidad y Satisfacción del Cliente ISO 9001: 2008. Todos nuestros tejidos se someten a rigurosos ensayos de calidad antes de su envío para asegurar un excelente rendimiento, llegando a su superar los estándares de las normas establecidas por organismos internacionales.

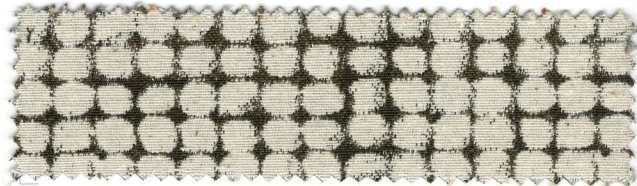
Piel SA, founded in 1976, is a textile company with 70.000m<sup>2</sup> production area, certified by SGS for the Quality and Customer Satisfaction Standard ISO 9001:2008. All of our fabrics are put through a rigorous test criteria before dispatch to ensure excellent performance and exceeding the regulatory standards



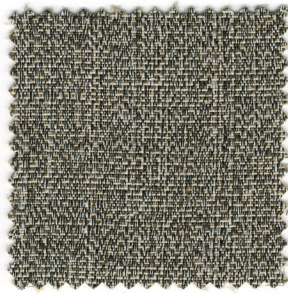
ROMBOTEX C/10



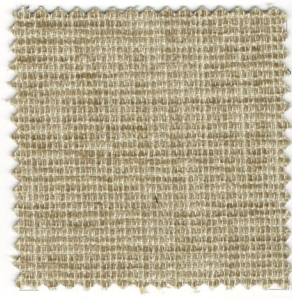
LEGNO C/10



PALITOS C/10



MODRONE C/10



DICLE C/21



DICLE C/10



SHAFT C/10



DERMA C/10

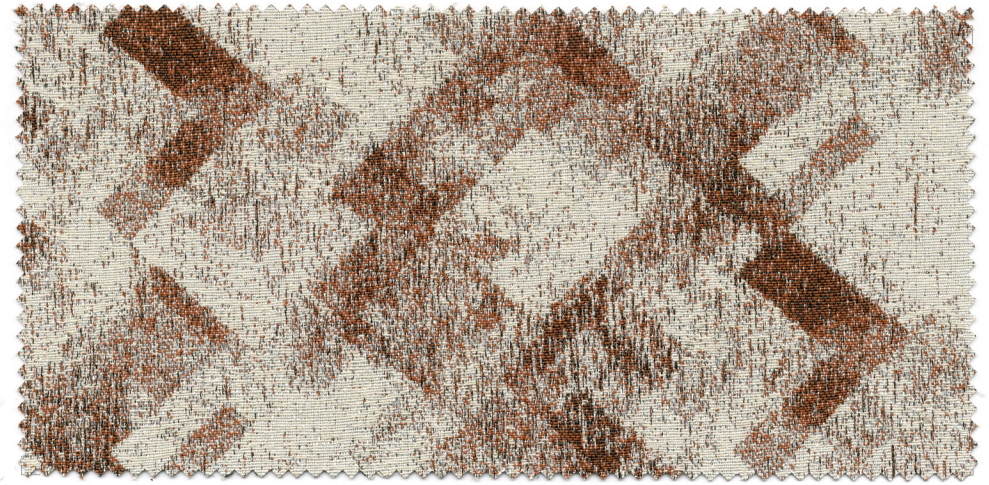


DERMA C/20

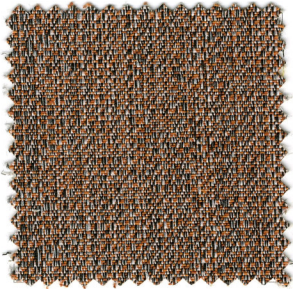


CONCA C/10





ROMBOTEX C/80



MODRONE C/80



DERMA C/20



CONCA C/80



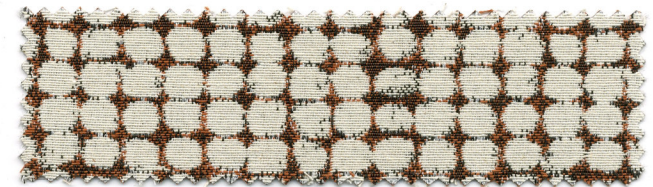
DERMA C/80



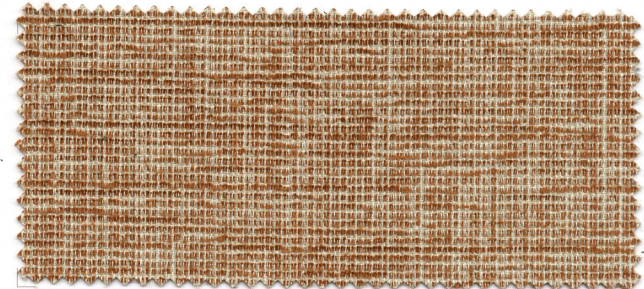
SHAFT C/80



LEGNO C/80



PALITOS C/80



DICILE C/80



ROMBOTEX C/26



LEGNO C/26



PALITOS C/26



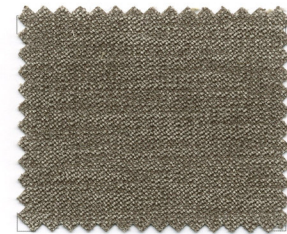
MODRONE C/26



DICLE C/26



DICLE C/26



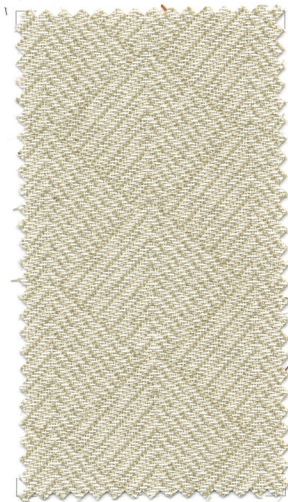
DERMA C/10



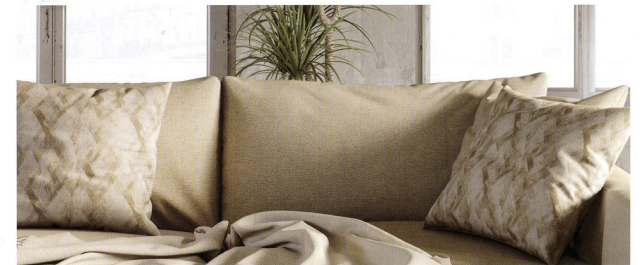
DERMA C/20

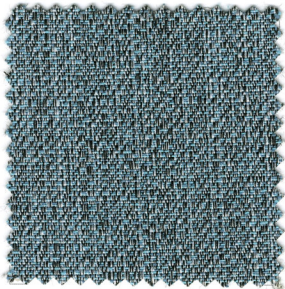


CONCA C/26



SHAFT C/26

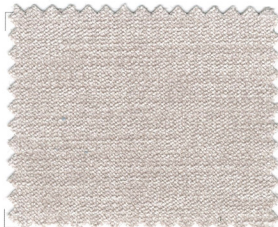




MODRONE C/60



SHAFT C/60



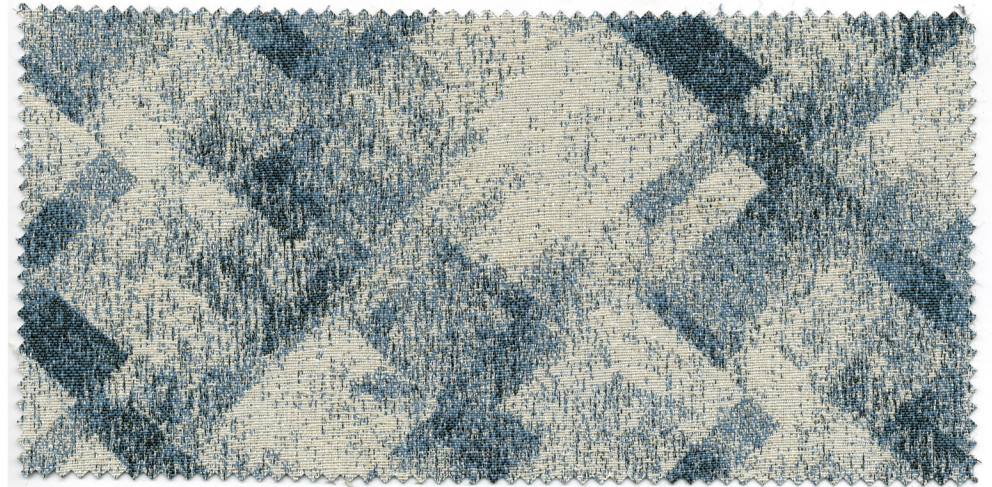
DERMA C/20



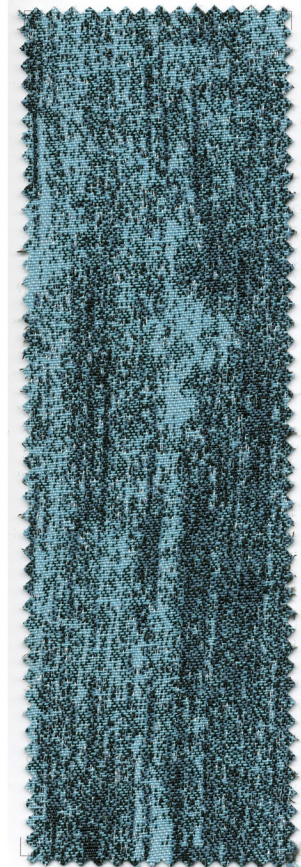
DERMA C/60



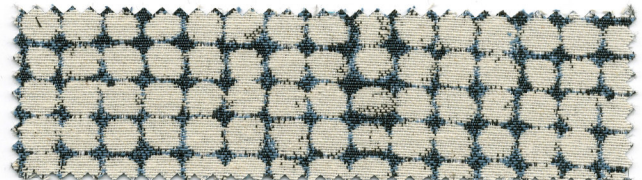
CONCA C/60



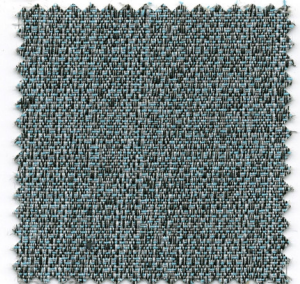
ROMBOTEX C/60



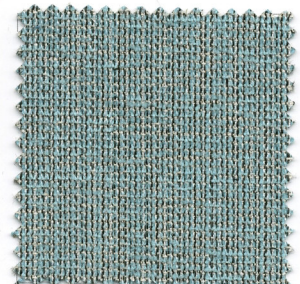
LEGNO C/60



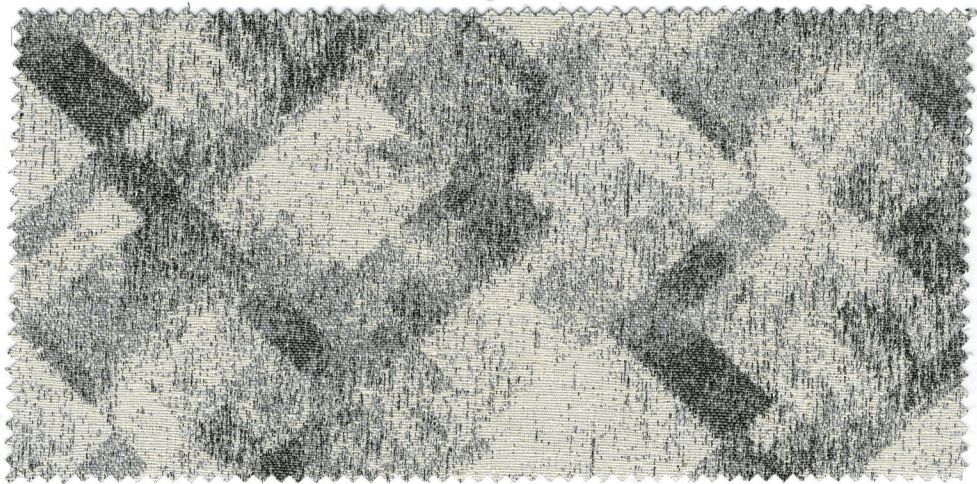
PALITOS C/60



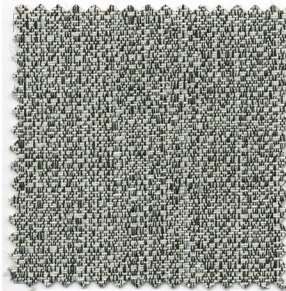
MODRONE C/61



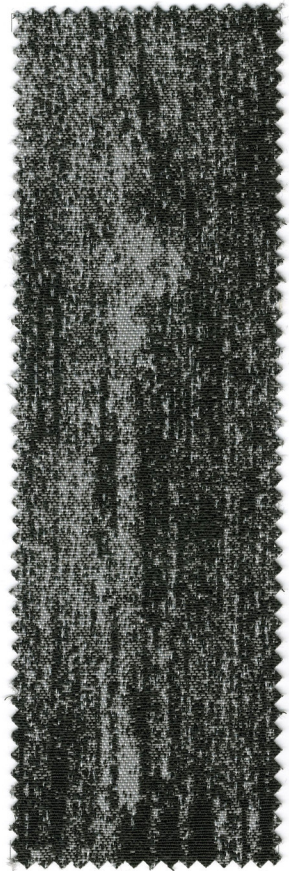
DICLE C/60



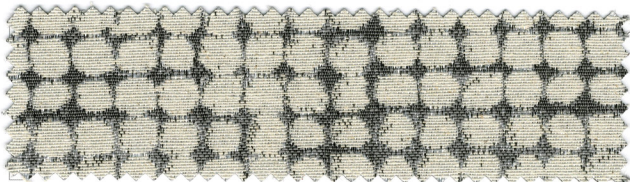
ROMBOTEX C/70



MODRONE C/28



LEGNO C/70



PALITOS C/70



SHAFT C/70



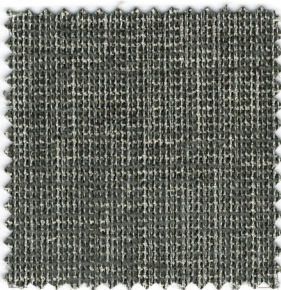
DERMA C/70



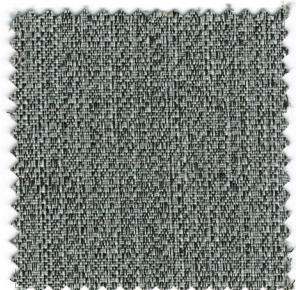
DERMA C/99



CONCA C/70



DICLE C/70

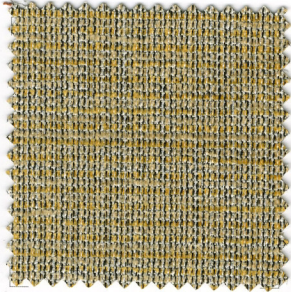


MODRONE C/70





ROMBOTEX C/82



DICLE C/82



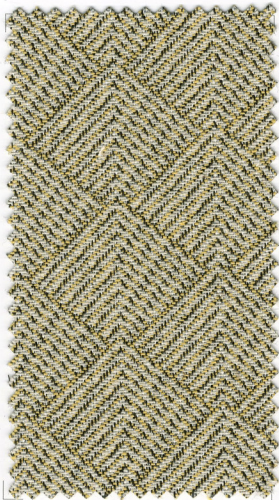
DERMA C/20



CONCA C/82



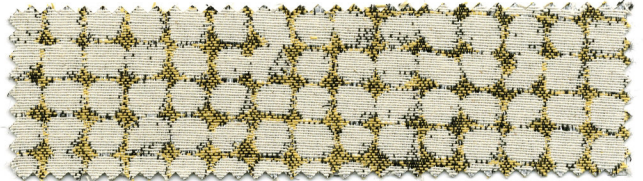
DERMA C/82



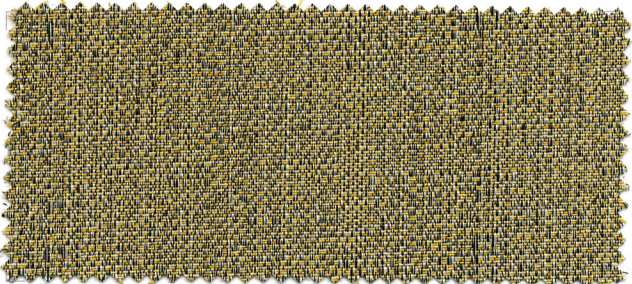
SHAFT C/82



LEGNO C/82



PALITOS C/82



MODRONE C/82





ROMBOTEX C/20



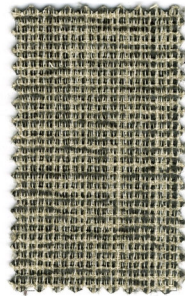
LEGNO C/20



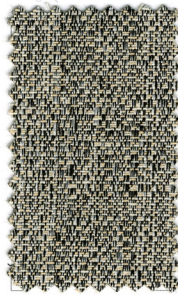
PALITOS C/20



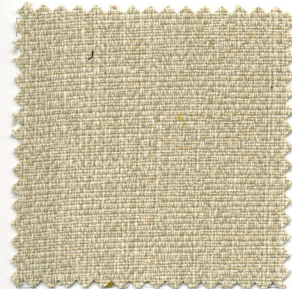
DICLE C/20



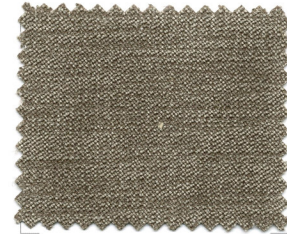
DICLE C/71



MODRONE C/27



MODRONE C/20



DERMA C/10



DERMA C/20



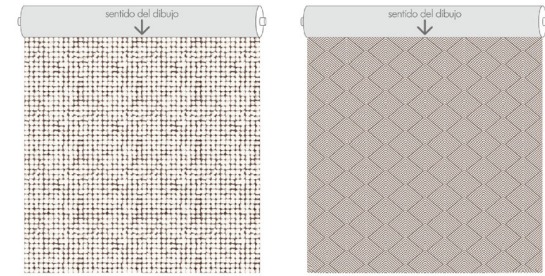
CONCA C/20



SHAFT C/20



# Dubai collection



PALITOS. Rapport 14,1x14,1 cm

SHAFT. Rapport 5,8x3,9 cm



LEGNO. Rapport 35x70 cm

ROMBOTEX. Rapport 35x15,8 cm

CONCA. Rapport 5,1x2,7 cm

## CARACTERÍSTICAS TÉCNICAS TECHNICAL CHARACTERISTICS CARACTÉRISTIQUES TECHNIQUES

NOMBRE NAME NOM	COMPOSICIÓN COMPOSITION COMPOSITION	ANCHO (cm) WIDTH (cm) LARGEUR (cm)	GRAMAJE (g/m <sup>2</sup> ) WEIGHT (g/m <sup>2</sup> ) GRAMMAGE (g/m <sup>2</sup> )	ABRASIÓN (ciclos) ABRASION TEST (cycles) TEST D'ABRASION (cycles)	PILLING PILLING PILLING	COSTURAS (u/t) SEAM STRENGTH (warp/weft) RESISTANCE DES COUTURES (c/t)
ROMBOTEX	59%CO-41%PES	140	320	20.000	4	3'8/3'5
LEGNO	59%CO-41%PES	140	360	20.000	4'5	4'3/6
CONCA	59%CO-41%PES	140	345	15.000	3-4	4'8/5
PALITOS	59%CO-41%PES	140	345	15.000	3	5/4'5
SHAFT	57%CO-43%PES	140	330	20.000	4	4'8/2'8
MODRONE	59%CO-41%PES	140	315	30.000	4-5	5/5
DICLE	28%CO-34%PAN-38%PES	140	320	30.000	5	3'1/2'7
DERMA	100%PES	140	220	20.000	5	3/3



LOS TESTS SE HAN REALIZADO BASÁNDOSE EN DIFERENTES MUESTRAS DE TEJIDO, POR TANTO SON VALORES MEDIOS E INDICATIVOS.  
TESTS HAVE BEEN DONE ON DIFFERENT SAMPLES, THEREFORE THEY SHOULD BE CONSIDERED AS MERELY GUIDELINES.  
LES TESTS ONT ÉTÉ RÉALISÉS EN SE BASANT SUR DIFFÉRENTS ÉCHANTILLONS DE TISSU, POUR CELA CE SONT DES VALEURS MOYENNES ET INDICATIVES.

SGS ABRASION TEST: UNE-EN ISO 12947-2 PILLING: UNE-EN ISO 12945-2 SEAM STRENGTH: UNE-EN ISO 13996-2

TODOS LOS TEJIDOS SON LAVABLES EN LAVADORA (excepto DERMA) ALL THESE FABRICS ARE MACHINE WASHABLE (except DERMA) TOUS LES TISSUS SONT LAVABLES EN MACHINE (sauf DERMA)



Lavado doméstico con jabones neutros a 30°C\* (excepto DERMA)  
Domestic wash, with neutral soaps and water about 30°C\* (except DERMA)  
Lavage domestique avec des savons neutres à 30°C\* (sauf DERMA)



Admite lavado en seco con percloroetileno  
Dry cleaning only with perchloroethylene  
Lavage à sec avec perchloréthylène seulement



No usar lejía  
Don't use bleach  
No pas utiliser de javel



Planchado al revés a 110°C  
Iron by the back side at 110°C  
Repassage à l'envers à 110°C



No usar secadora  
Do not tumble dry  
No pas utiliser de Sèche-Linge

\*Para la óptima conservación del tejido, aconsejamos su lavado en un establecimiento especializado.

\*For the best maintenance of the fabric, we recommend to use dry cleaning.

\*Pour une conservation optimale du tissu, nous vous conseillons un lavage dans un établissement spécialisé.

PRODUCTO FABRICADO EN ESPAÑA PRODUCT MADE IN SPAIN PRODUIT FABRIQUÉ EN ESPAGNE

**PIEL SA**

PIEL, S.A. - Avda. Del Cordell de Murcia, 6 - 46890 AGULLENT - SPAIN

+34 962 907 400  
www.piel.es