

TERRA

COLLECTION

TERRA COLLECTION



PIEL S.A. - Avda. Del Cordell de Múrcia, 6 - 46890 AGULLENT - SPAIN
+34 962 907 400
www.piel.es



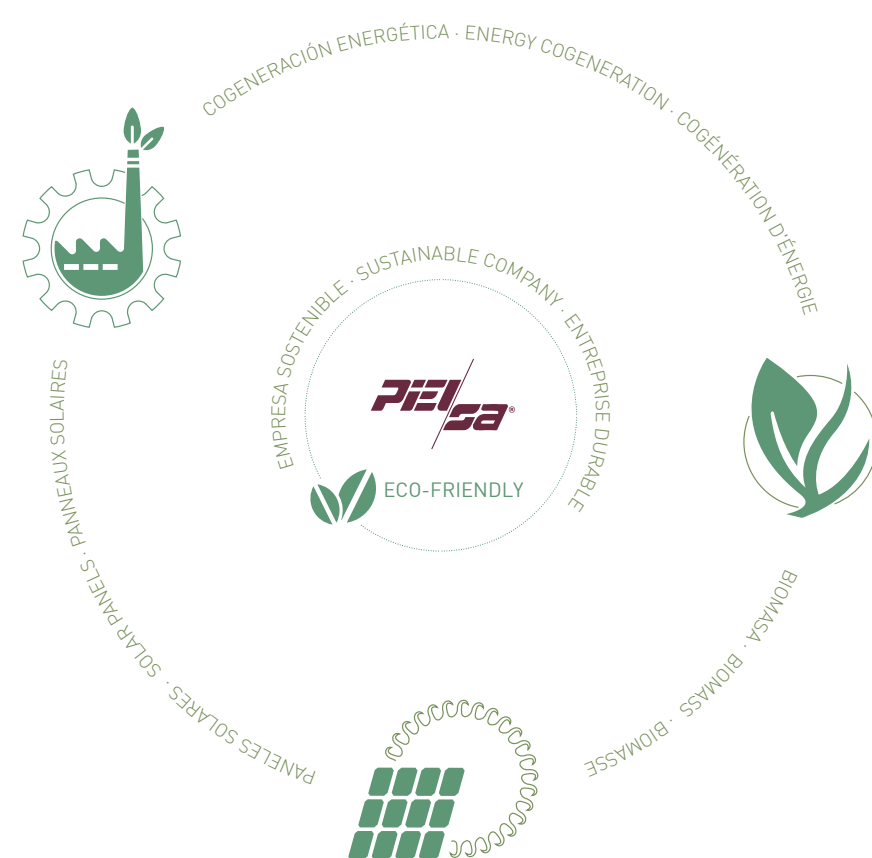
Tejiendo por un mundo mejor

Piel SA, es una empresa comprometida con las personas, la calidad, el servicio y el planeta.



Weaving for a better world

Piel SA, is a company committed to people, quality, service and the planet.



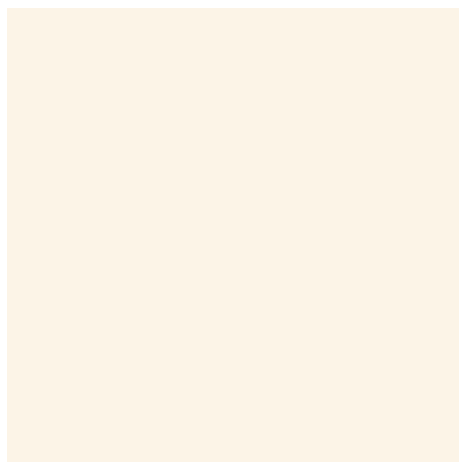
Piel SA, fundada en 1976, es una empresa textil con una área de producción de más de 70.000m², certificada por SGS para la Norma de Calidad y Satisfacción del Cliente **ISO 9001: 2015**.

Piel SA, founded in 1976, is a textile company with 70.000m² production area, certified by SGS for the Quality and Customer Satisfaction Standard **ISO 9001:2015**.

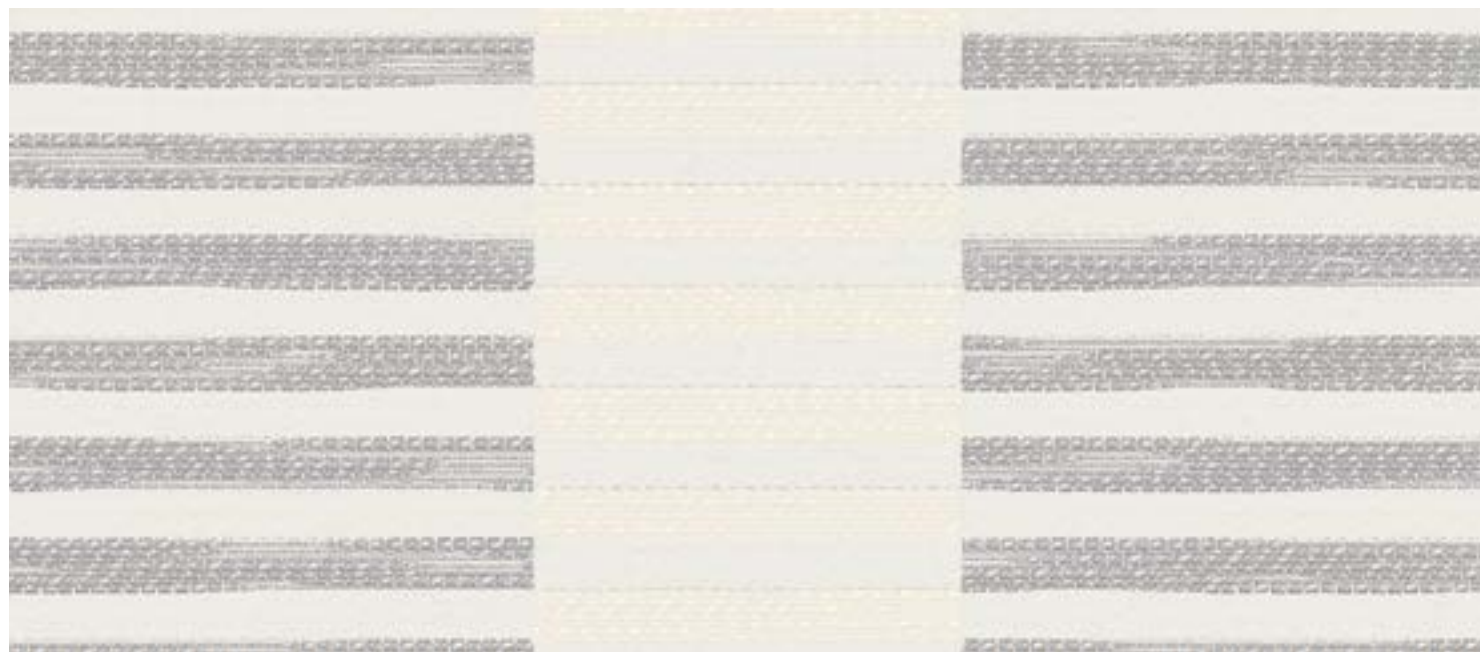
TERRA

COLLECTION

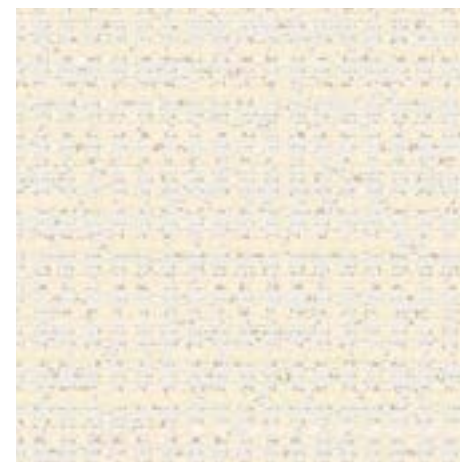




OXI C/26



VENTUS C/27



IGNIS C/26



IGNIS C/65



IGNIS C/71



IGNIS C/70



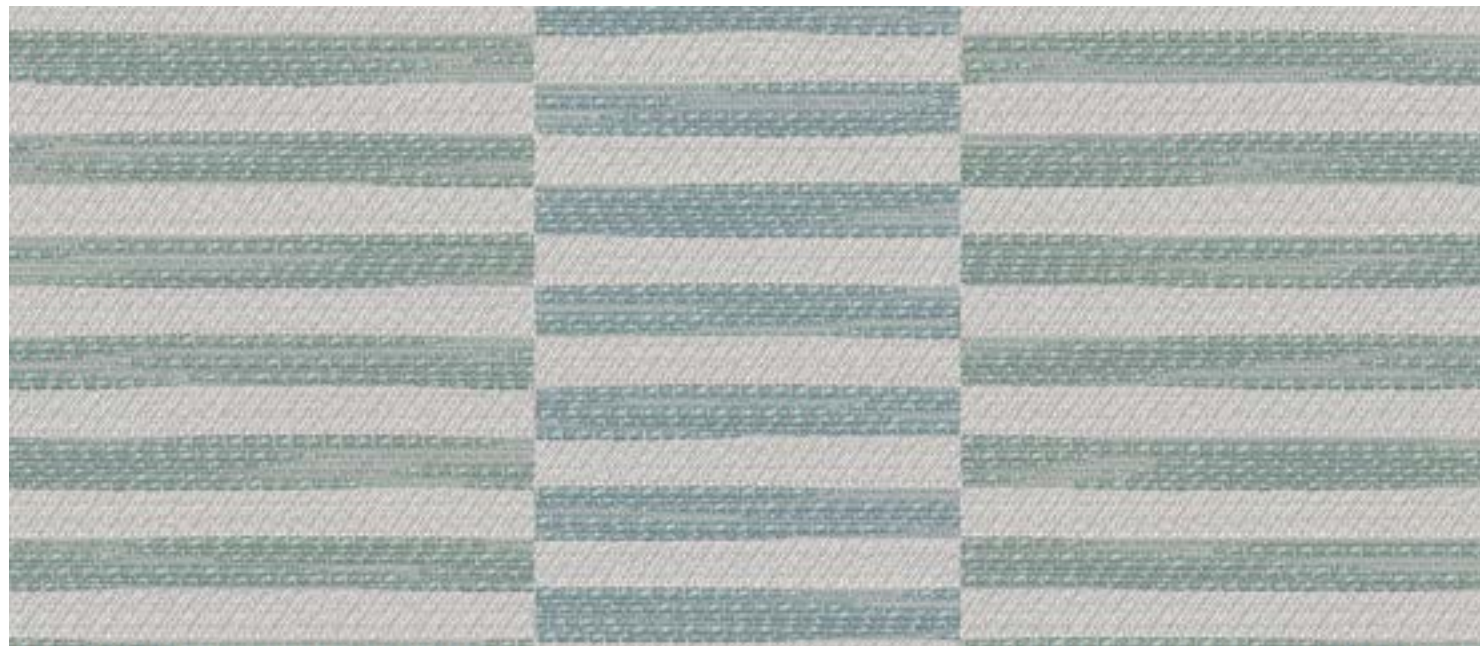
OXI C/70



RADIX C/27



OXI C/77



VENTUS C/76



OXI C/65



RADIX C/76



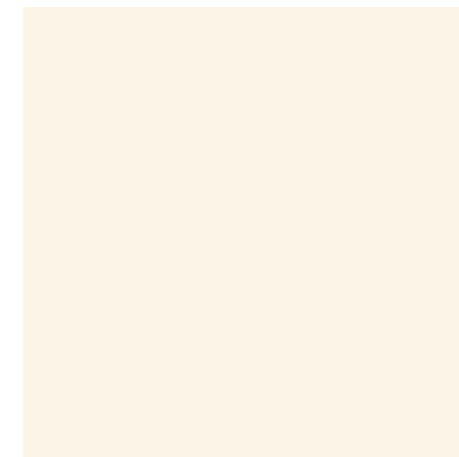
OXI C/71



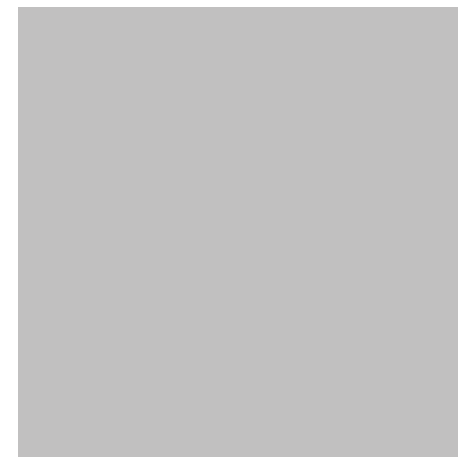
AQUA C/65



AQUA C/71



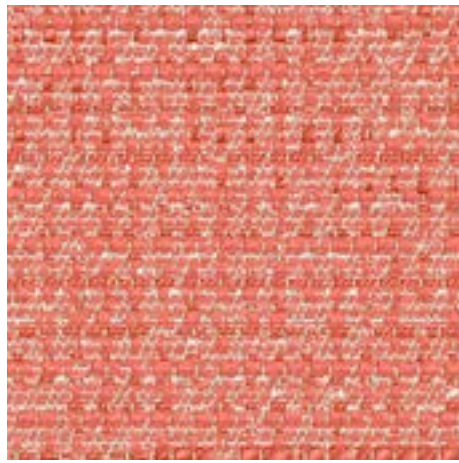
AQUA C/26



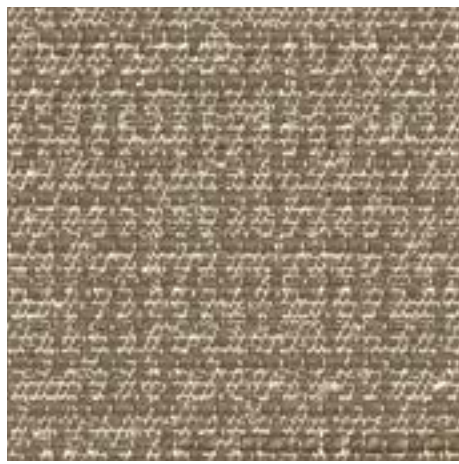
AQUA C/70



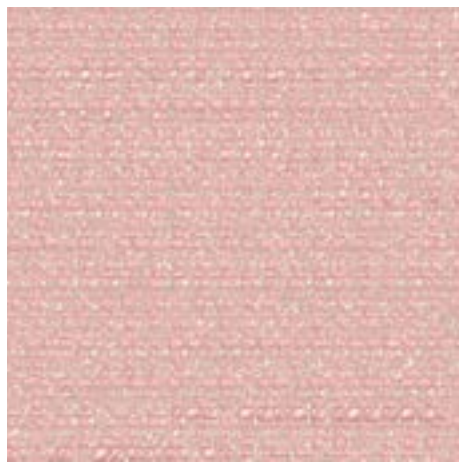
IGNIS C/20



IGNIS C/40



IGNIS C/25



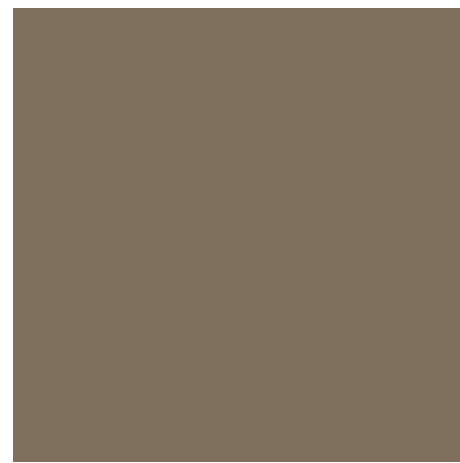
IGNIS C/30



RADIX C/42



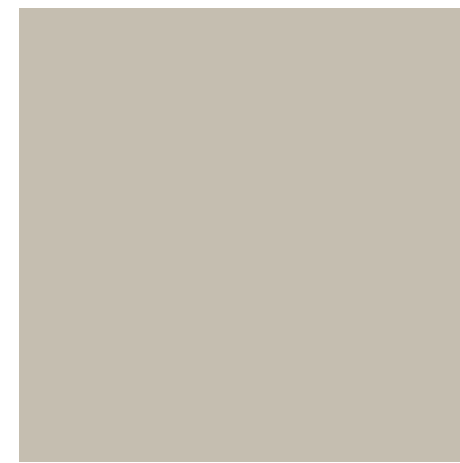
VENTUS C/42



AQUA C/25



AQUA C/40



AQUA C/20



OXI C/21



OXI C/30



OXI C/25



OXI C/40



RADIX C/30



VENTUS C/30

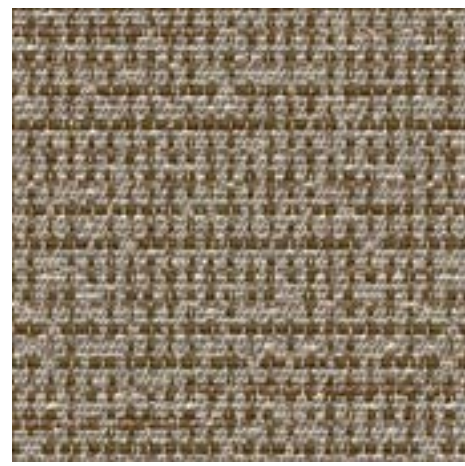




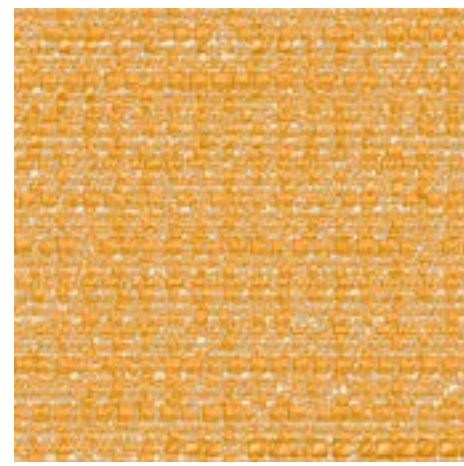
IGNIS C/22



IGNIS C/50



IGNIS C/12



IGNIS C/80



VENTUS C/81



OXI C/14



OXI C/15



RADIX C/81



OXI C/80



VENTUS C/52



OXI C/50



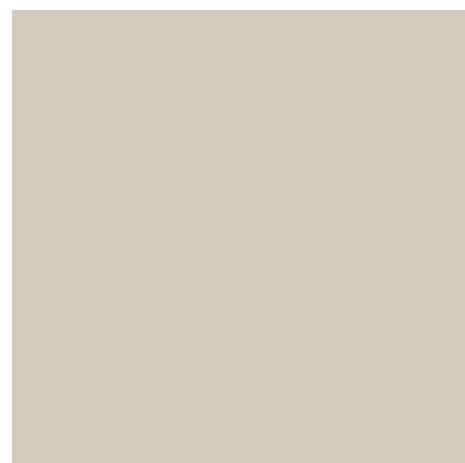
RADIX C/52



OXI C/22



AQUA C/50



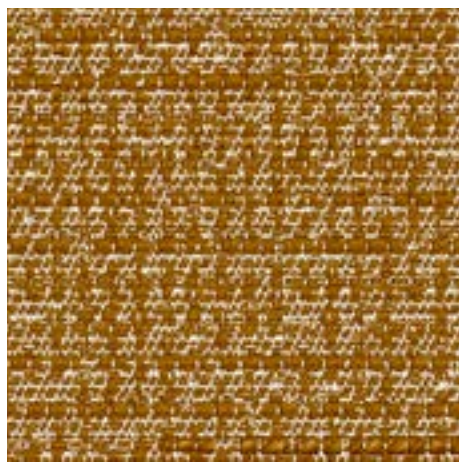
AQUA C/22



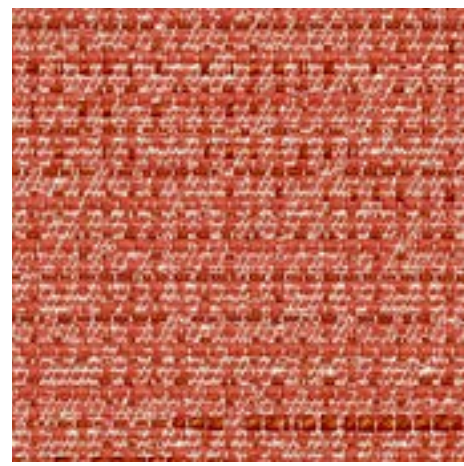
AQUA C/12



AQUA C/80



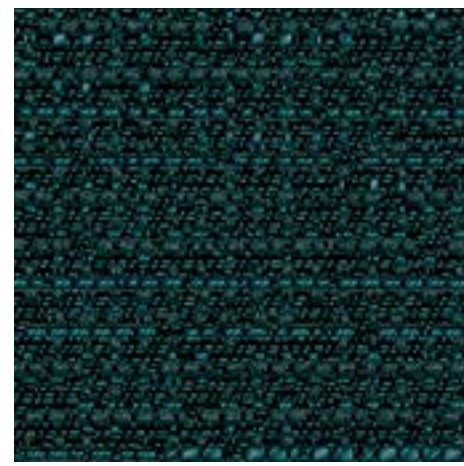
IGNIS C/82



IGNIS C/44



IGNIS C/72



IGNIS C/56



RADIX C/48



OXI C/72



VENTUS C/48



OXI C/56



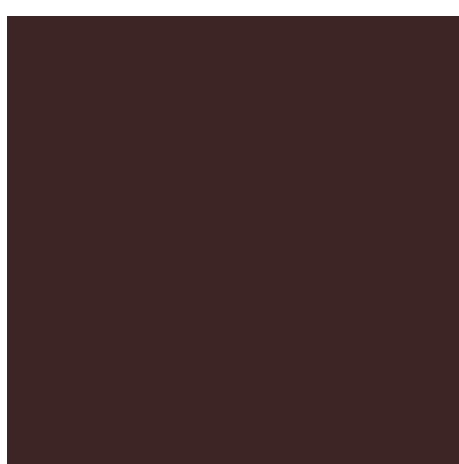
OXI C/77



RADIX C/75



OXI C/44



AQUA C/72



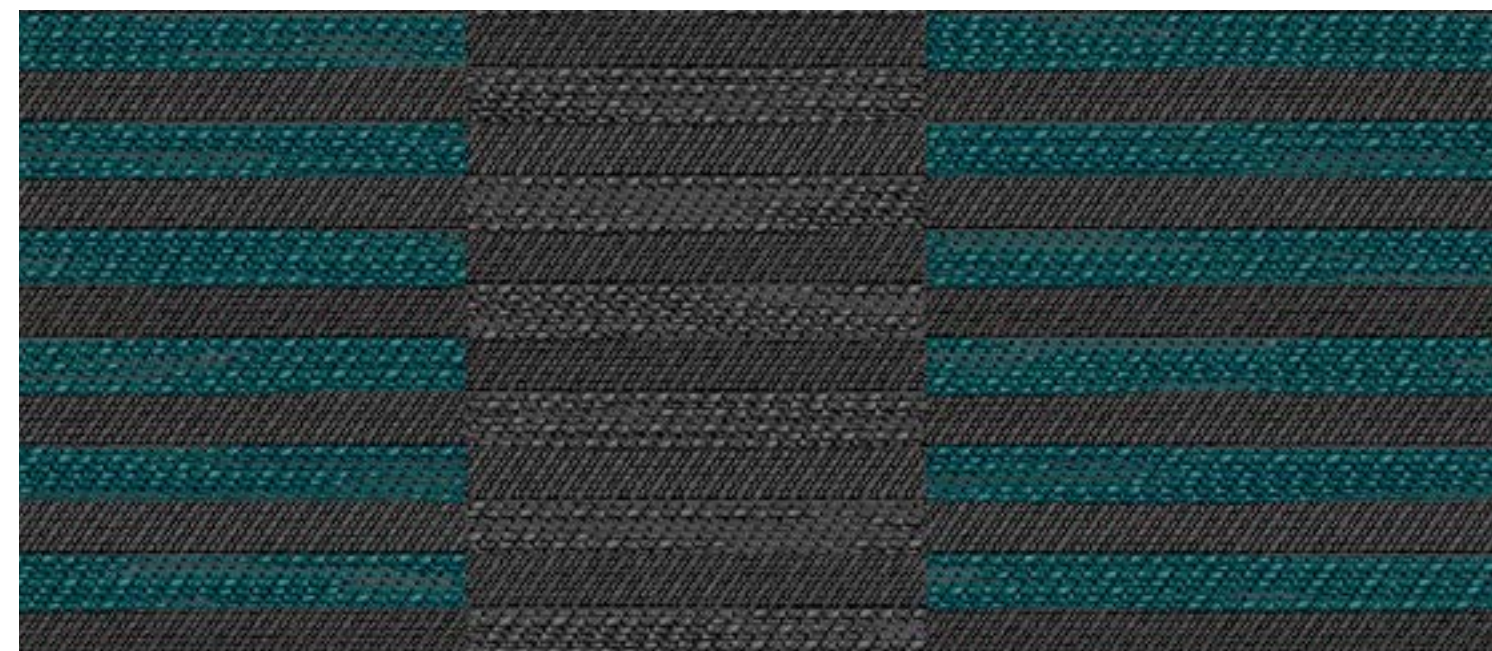
AQUA C/44



AQUA C/82



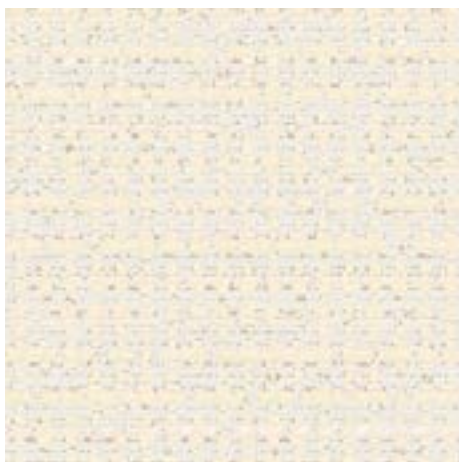
AQUA C/56



VENTUS C/75



OXI C/82



IGNIS C / 26



IGNIS C / 60



IGNIS C / 61



IGNIS C / 64



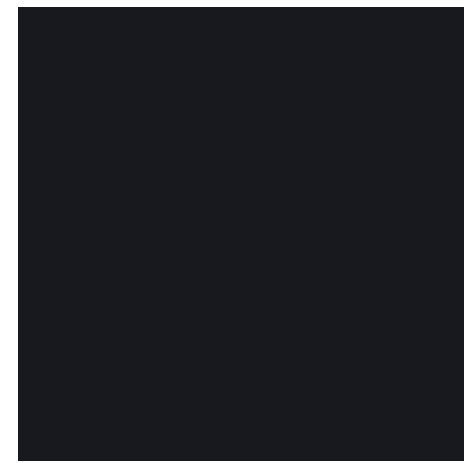
RADIX C / 60



VENTUS C / 60



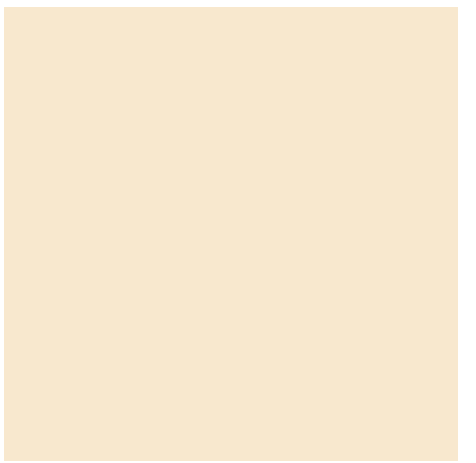
OXI C / 61



OXI C / 64



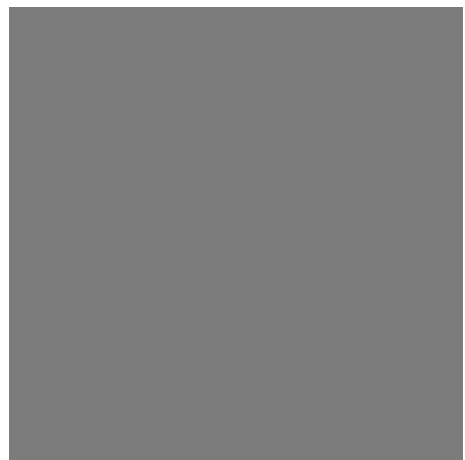
OXI C / 60



OXI C / 26



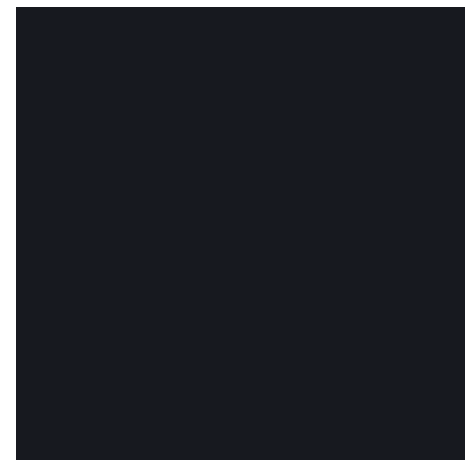
AQUA C / 61



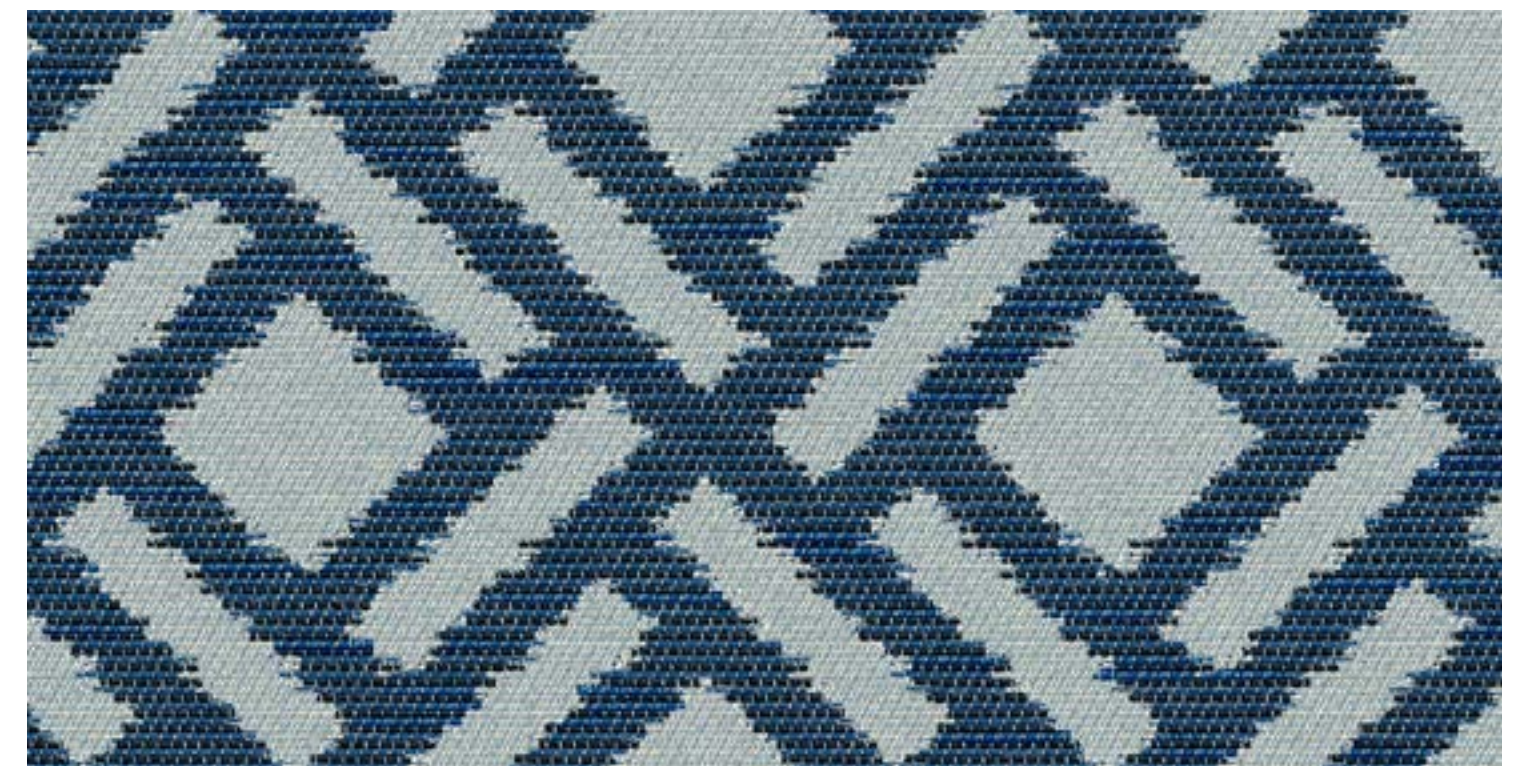
AQUA C / 60



AQUA C / 26



AQUA C / 64



RADIX C / 64



VENTUS C / 64





OXI C / 14



RADIX C / 22



OXI C / 28



VENTUS C / 22



OXI C / 21



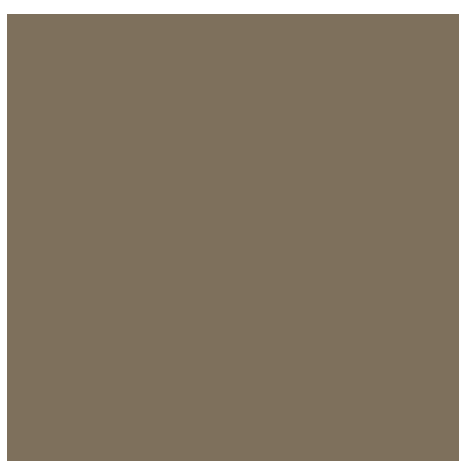
RADIX C / 25



OXI C / 22



VENTUS C / 15



OXI C / 25



IGNIS C / 12



IGNIS C / 20



IGNIS C / 22



IGNIS C / 25



AQUA C / 12



AQUA C / 20



AQUA C / 22



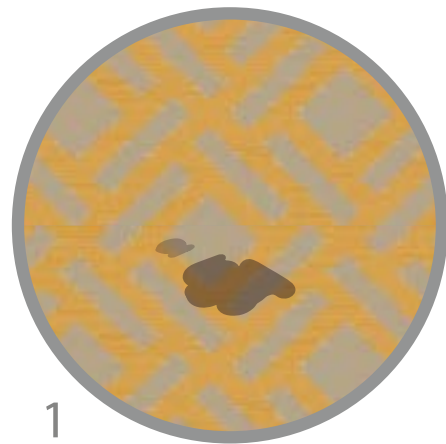
AQUA C / 25

TERRA

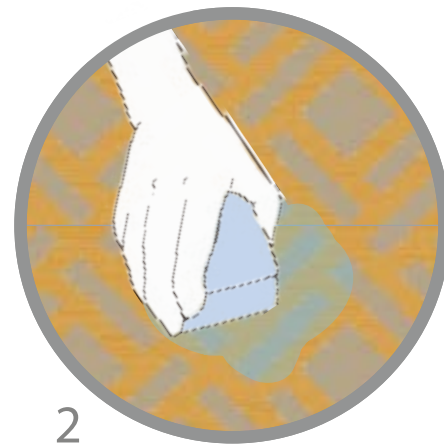
COLLECTION



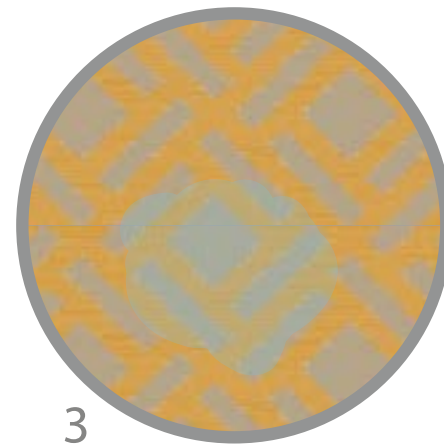
1. Retira el exceso de producto de la tapicería.
1. Remove excess product from upholstery.
1. Enlever le produit excédentaire du tissu.



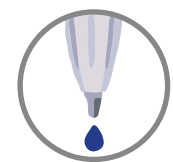
2. Limpiar la mancha con un paño húmedo.
2. Clean stain with a damp cloth.
2. Nettoyez la tache avec un chiffon humide.



3. Dejar secar la tapicería al aire.
3. Allow the upholstery to become air-dry.
3. Laisser sécher le tissu dans l'air.



OTRAS POSIBILIDADES DE ACABADO BAJO CONSULTA
OTHER FINISHINGS AVAILABLE UPON REQUEST



Stain release
Antiboli



CO2Pure
converts CO₂ - NOX - VOC'S into minerals



Encapsulated
Fragrance, cosmetics,
antistress, aloe vera



Biocides
antibacterial, anti-dust mites,
antivirus, antifungal

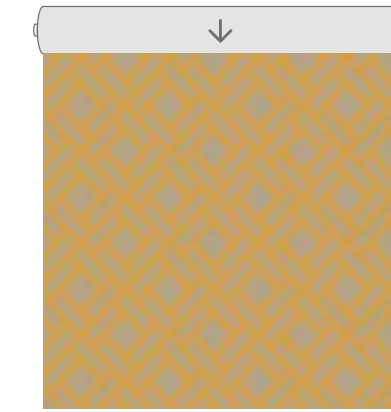
FR Not solid to wash
UNE-EN13772/13773
NF P 92-503/504/505



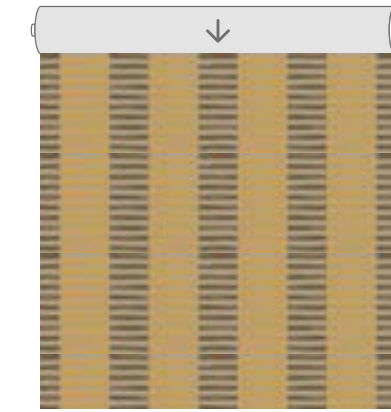
FR Solid to wash
BS5852
UNE-1021

TERRA

COLLECTION



RADIX. Rapport 17,5x16,6 cm



VENTUS. Rapport 17,5x2 cm



IGNIS. Rapport 7,8x11,6 cm

CARACTERÍSTICAS TÉCNICAS TECHNICAL CHARACTERISTICS CARACTÉRISTIQUES TECHNIQUES

NOMBRE NAME NOM	RADIX	VENTUS	IGNIS	AQUA	OXI
COMPOSICIÓN COMPOSITION COMPOSITION	34%PES 14%VIS 6%LI 24%CO-22%PAN	31%PES 30%VIS 13%LI 26%CO	34%PES 14%VIS 6%LI 24%CO-22%PAN	31%PES 30%VIS 13%LI 26%CO	77%PES 23%CO
ANCHO (cm) WIDTH (cm) LARGEUR (cm)	140				
GRAMAJE (g/m ²) WEIGHT (g/m ²) GRAMMAGE (g/m ²)	409	428	423	421	446
ABRASIÓN (ciclos) ABRASION TEST (cycles) TEST D'ABRASION (cycles)	30.000	25.000	30.000	30.000	50.000
PILLING PILLING PILLING	4	3-4	5	4	5
COSTURAS (u/t) SEAM STRENGTH (warp/weft) RES. DES COUTURES (c/t)	4/2	3,8/3	3/2	4,5/2	4,7/2,6
ACABADO FINISH FINITION	PIE/SA CLEAN				
INSTRUCCIONES LAVADO CLEANING INSTRUCTIONS INSTRUCTIONS DE LAVAGE					
APLICACIONES APPLICATIONS APPLICATIONS					

ABRASION TEST: UNE-EN ISO 12947-2 PILLING: UNE-EN ISO 12945-2 SEAM STRENGTH: UNE-EN ISO 13936-2

