

Litography Collection

PRODUCTO FABRICADO EN ESPAÑA PRODUCT MADE IN SPAIN PRODUIT FABRIQUÉ EN ESPAGNE



PIEL, S.A. - Avda. Del Cordell de Múrcia, 6 - 46890 AGULLENT - SPAIN
+34 962 907 400
info@pielsa.es



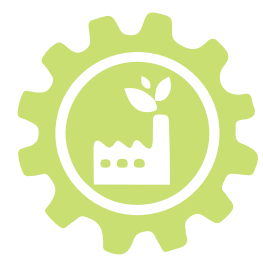
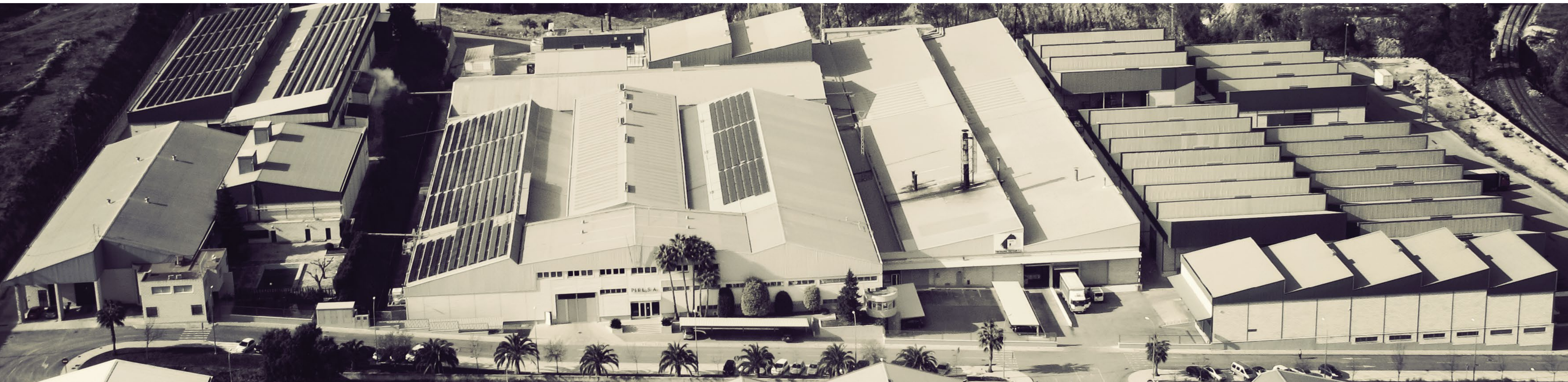
Tejiendo por un mundo mejor

Piel SA, es una empresa comprometida con las personas, la calidad, el servicio y el planeta.

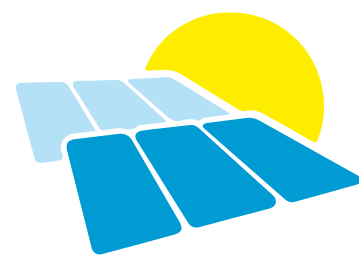


Weaving for a better world

Piel SA, is a company committed to people, quality, service and the planet.



COGENERACIÓN
COGENERATION PLANT



PLACAS SOLARES
SOLAR PANELS



BIOMASA
BIOMASS

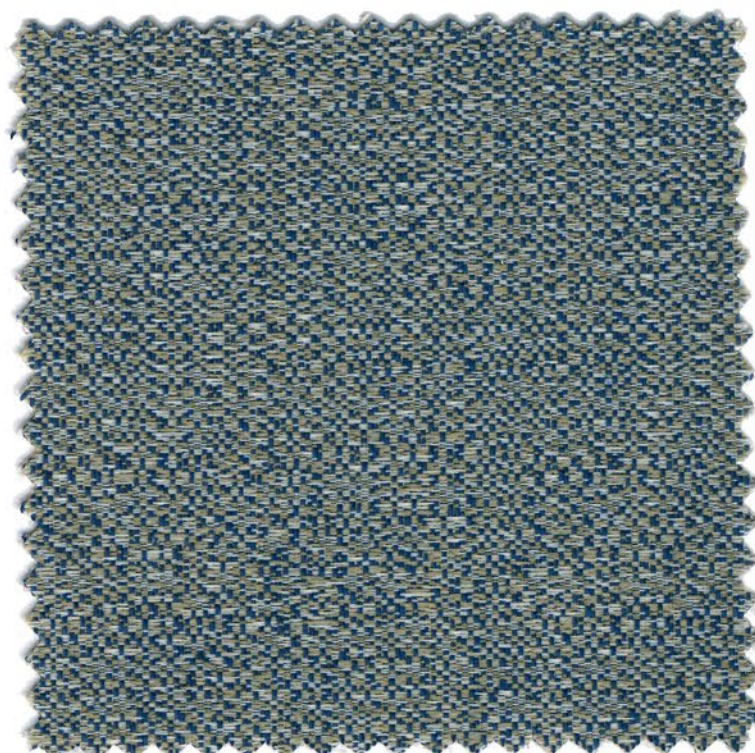


Piel SA, fundada en 1976, es una empresa textil con una área de producción de más de 70.000m², certificada por SGS para la Norma de Calidad y Satisfacción del Cliente **ISO 9001: 2015**.

Piel SA, founded in 1976, is a textile company with 70.000m² production area, certified by SGS for the Quality and Customer Satisfaction Standard **ISO 9001:2015**.



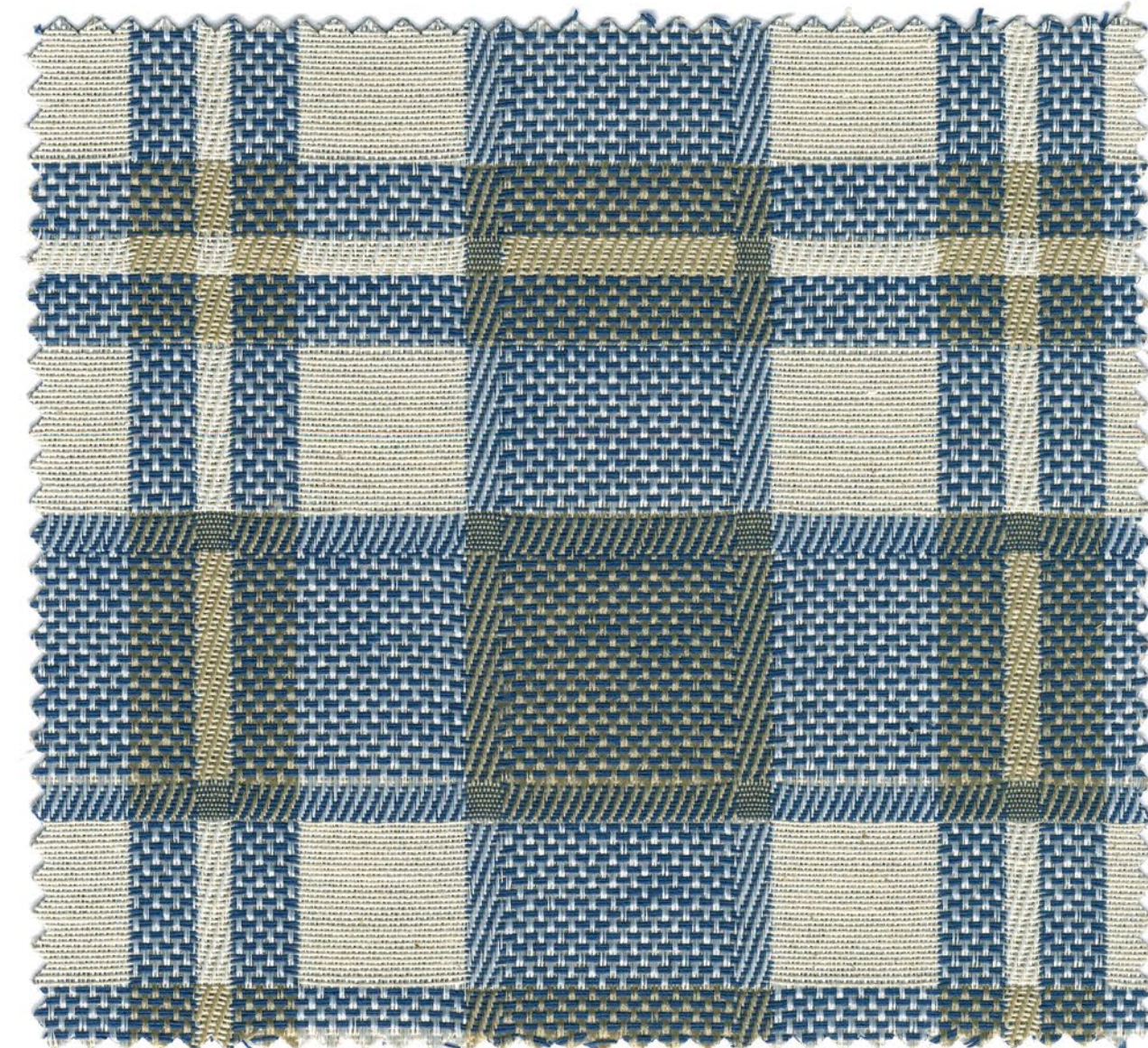
PORTLAND C/26



PORTLAND C/64



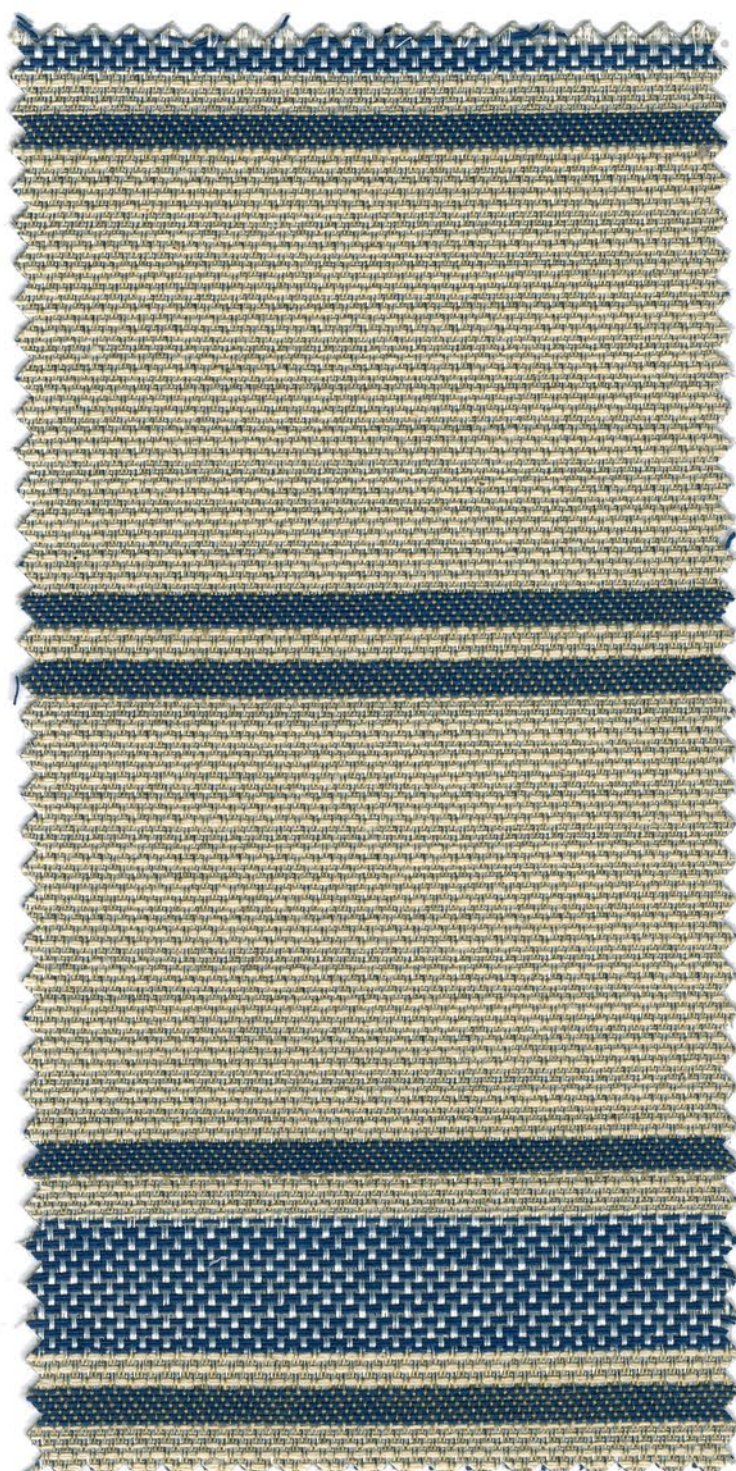
BODIL C/64



IVAR C/64



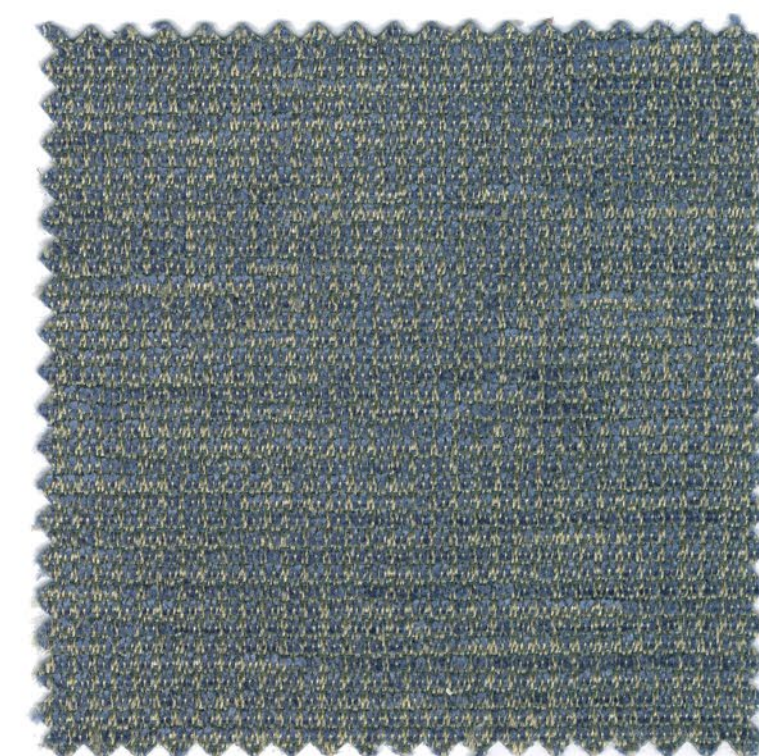
AILA C/64



TIWAR C/64



PECLE C/26



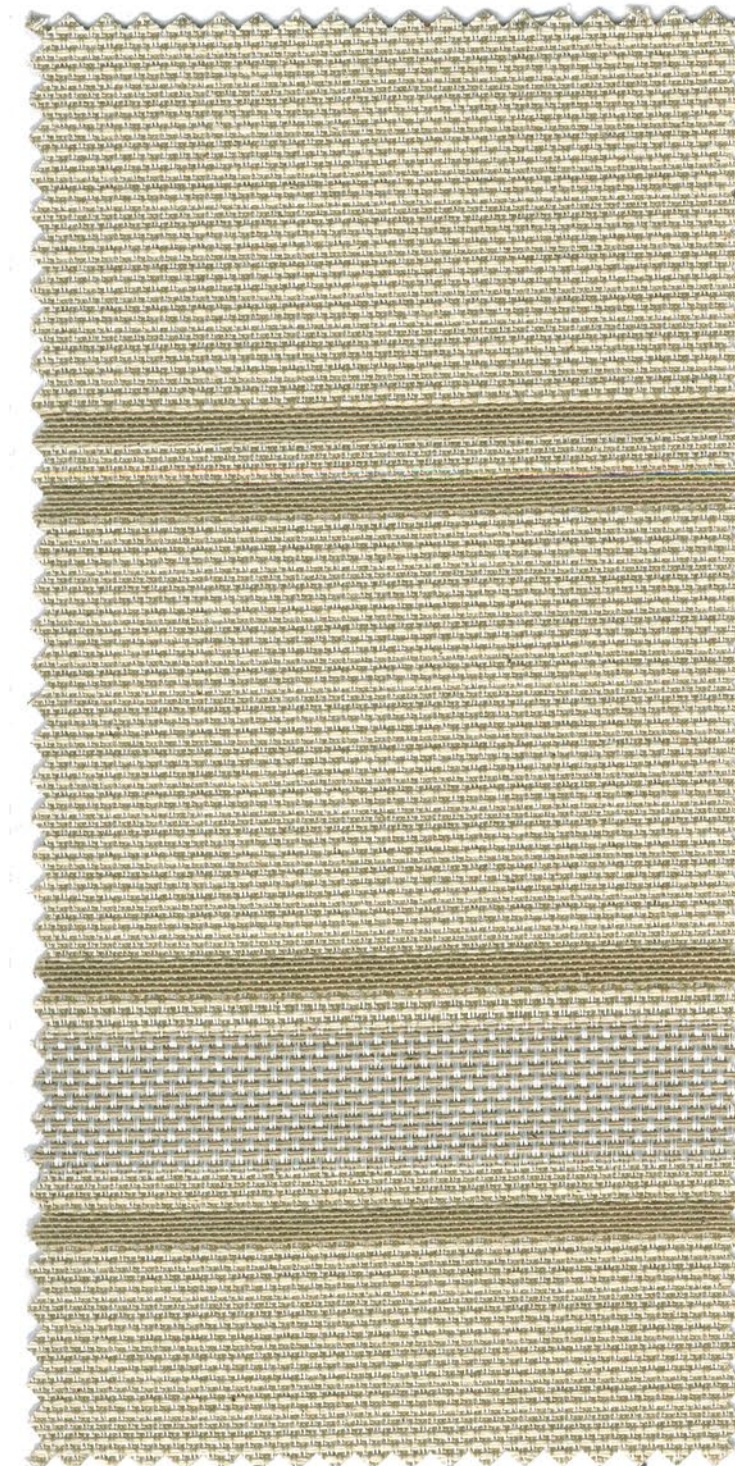
PECLE C/64



PECLÉ C/20



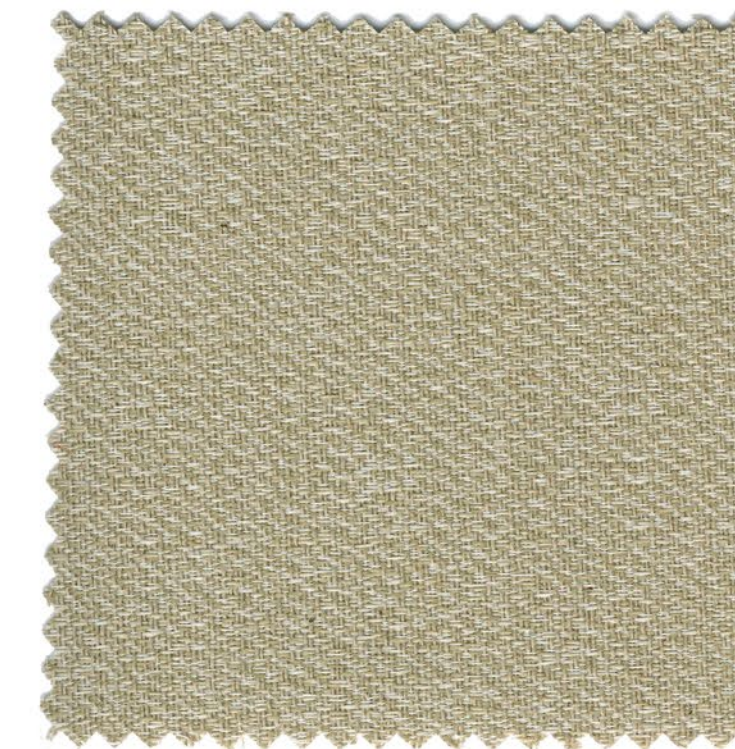
PECLÉ C/22



TIWAR C/20



AILA C/20



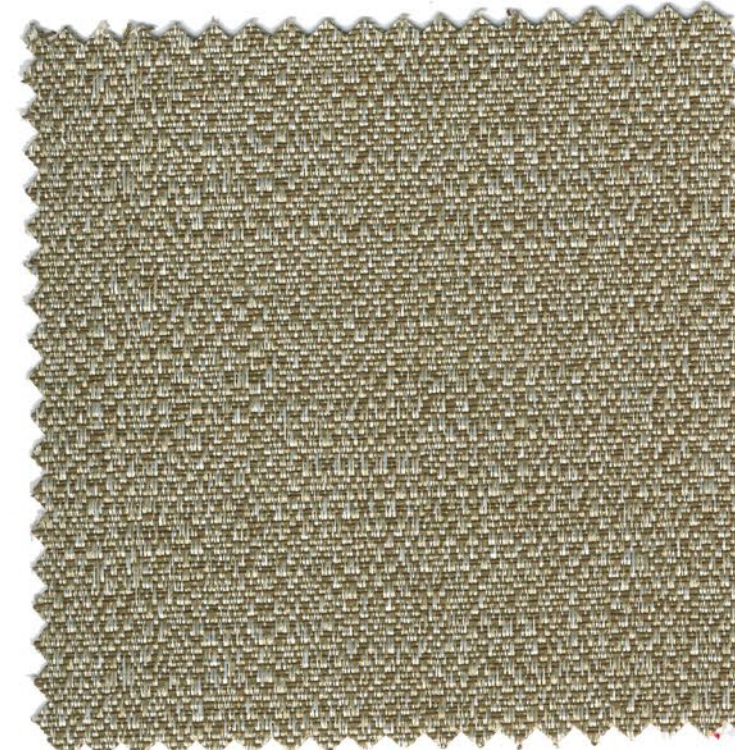
PORTLAND C/20



IVAR C/20



BODIL C/20

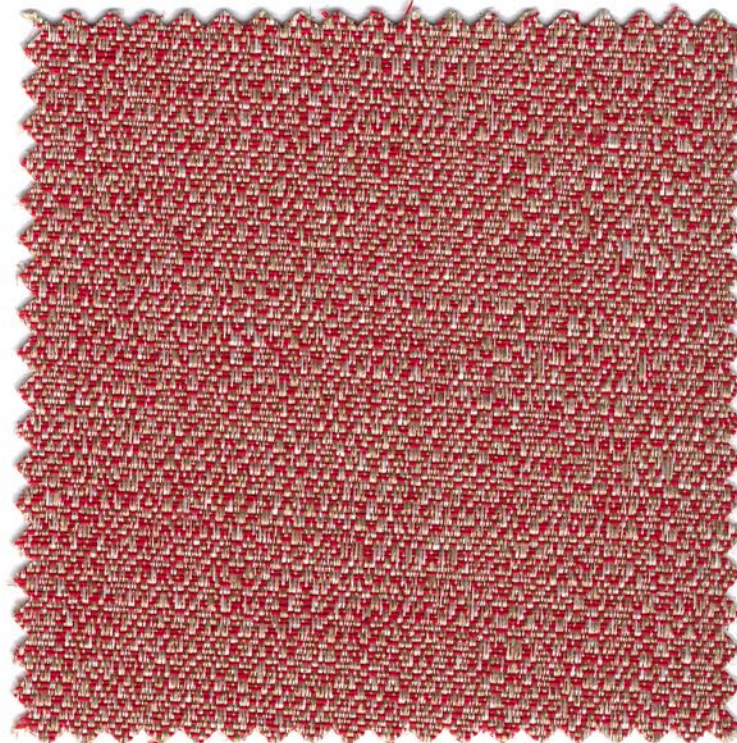


PORTLAND C/10





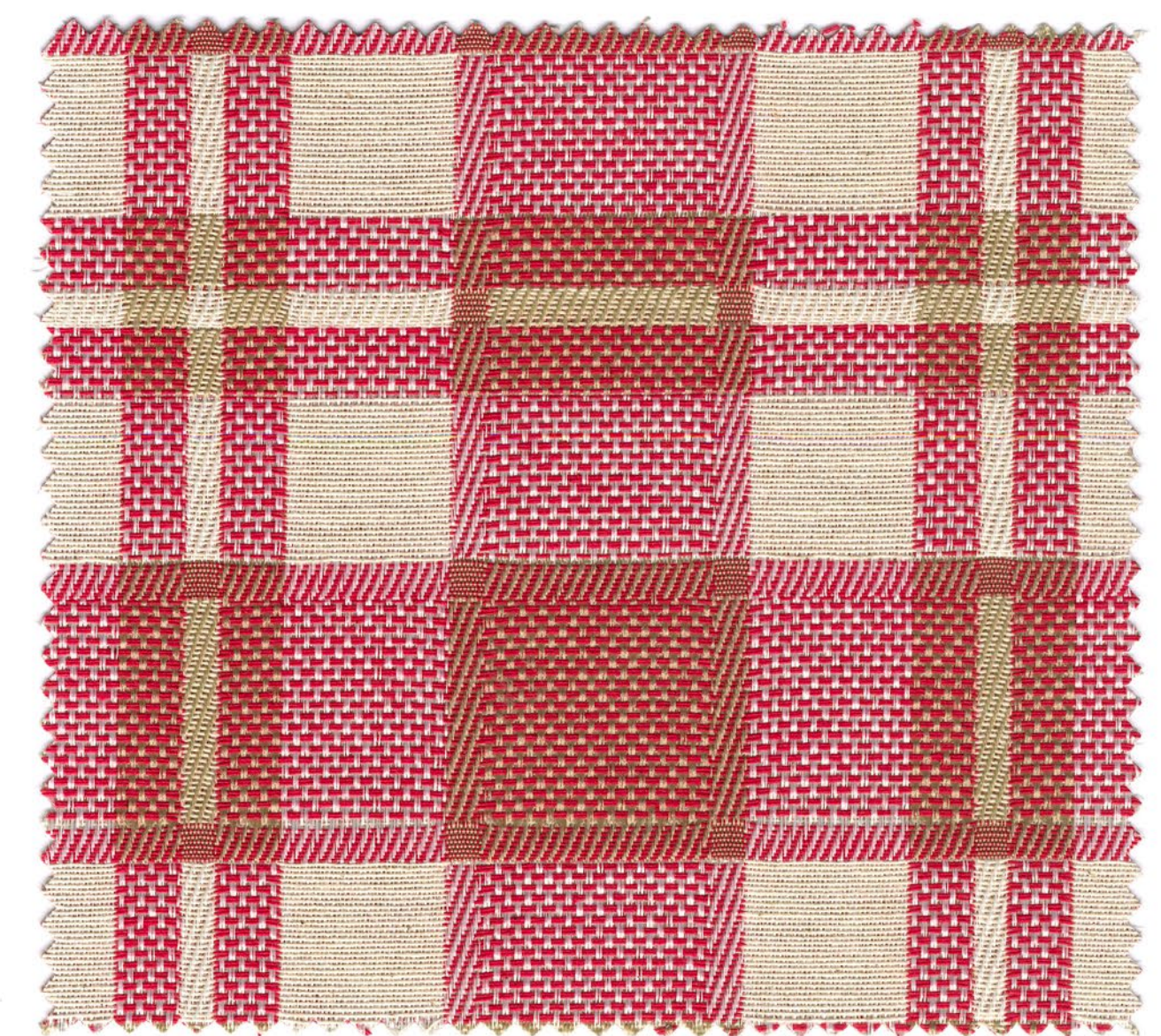
PORTLAND C/20



PORTLAND C/40



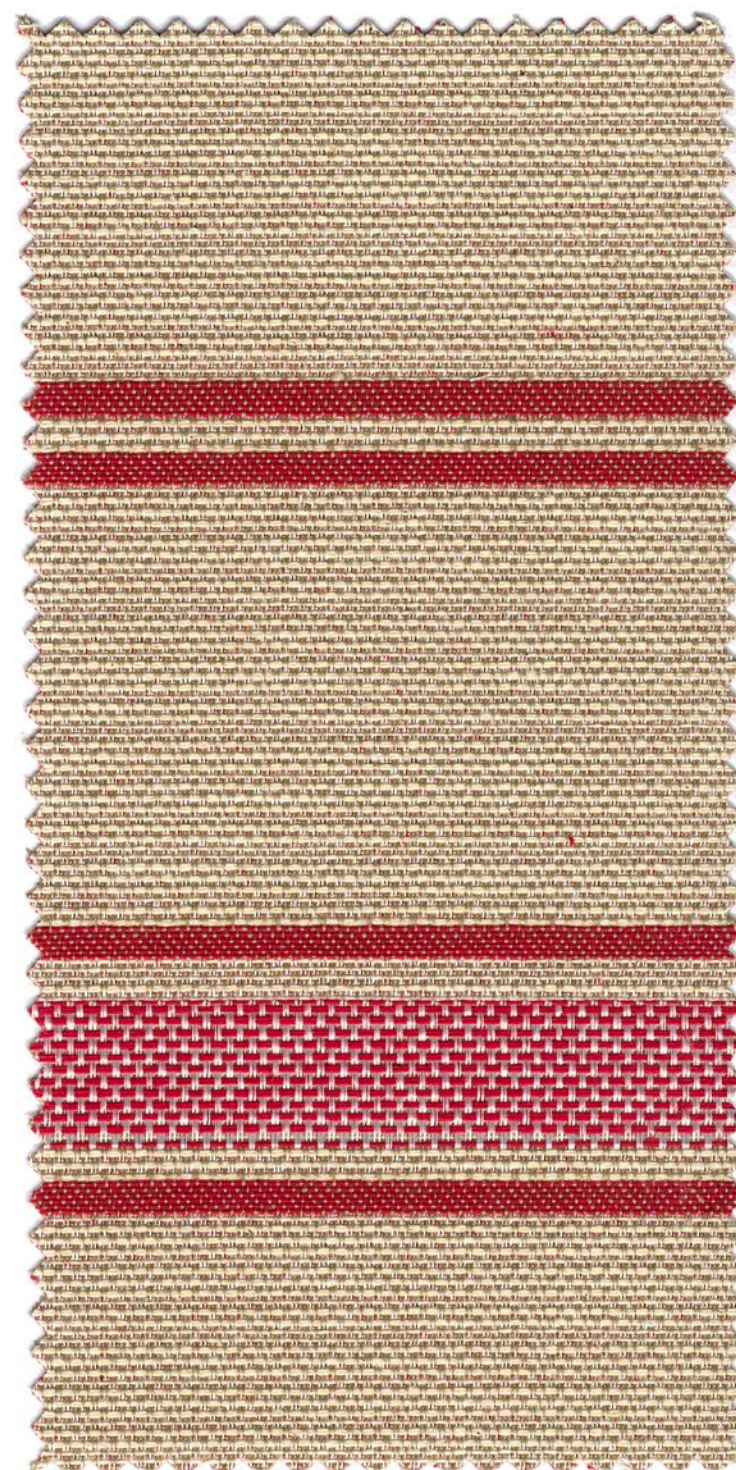
BODIL C/40



IVAR C/40



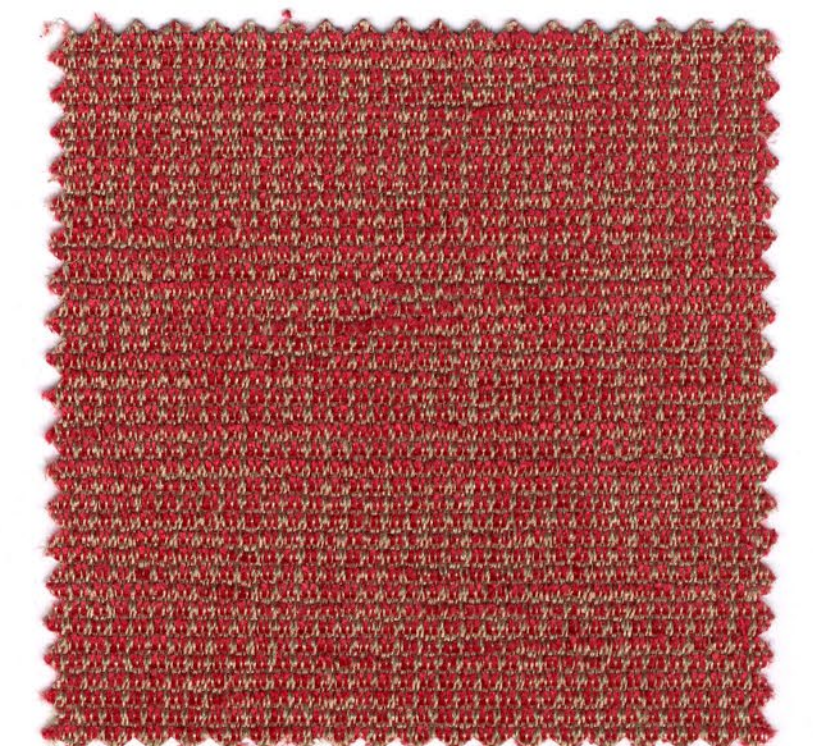
AILA C/40



TIWAR C/40



PECLE C/22



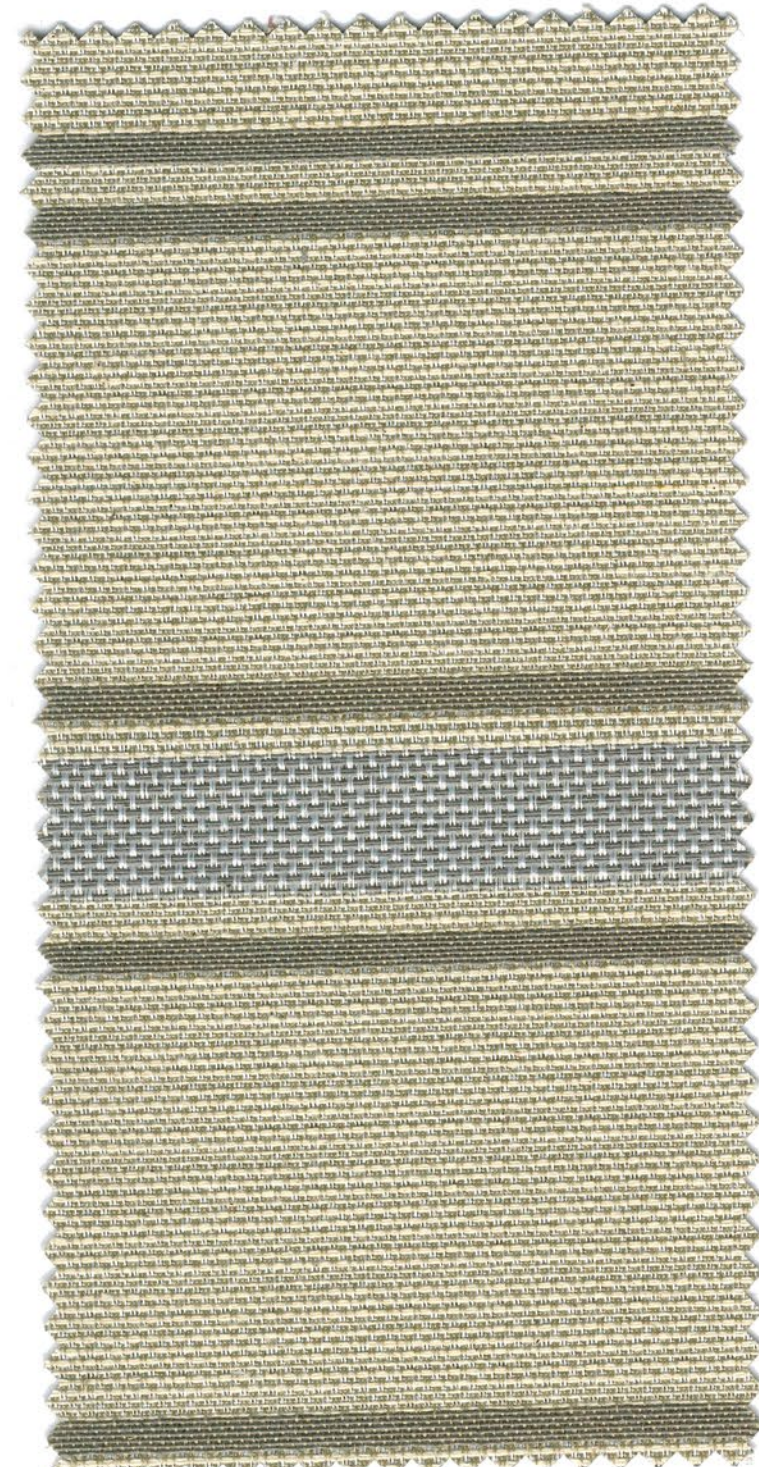
PECLE C/40



PECLE C/70



PECLE C/22



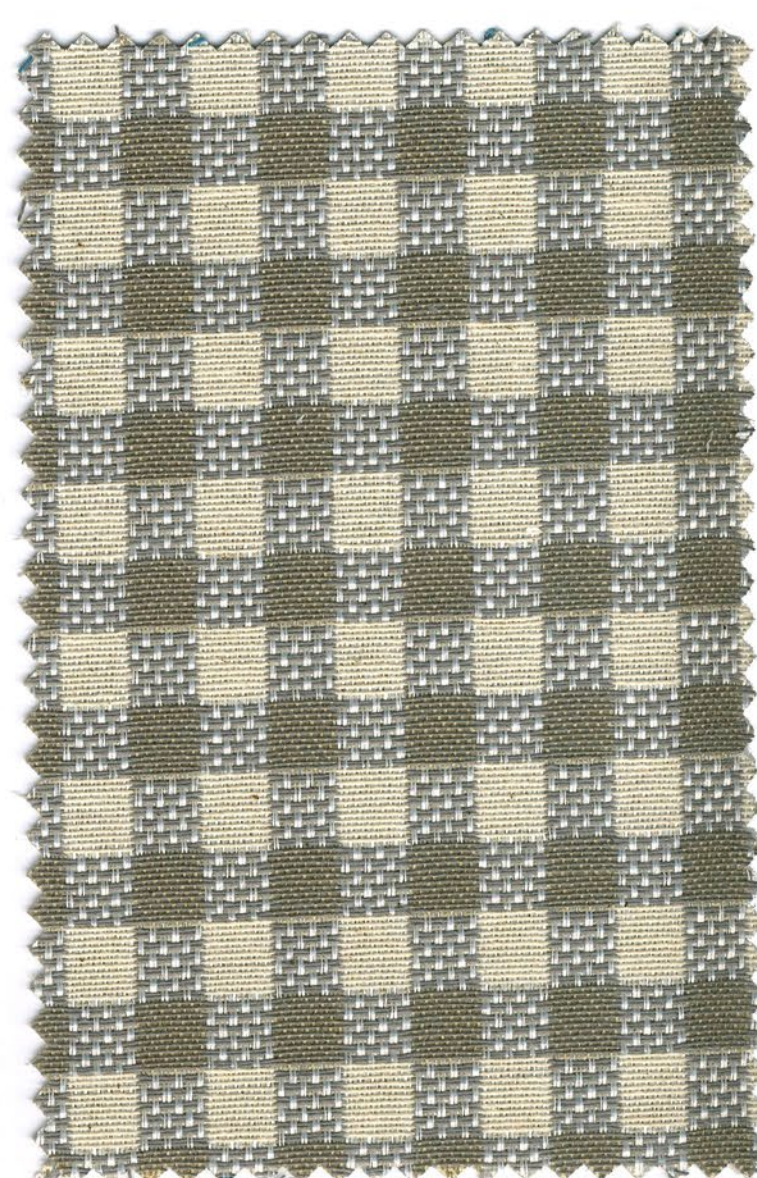
TIWAR C/70



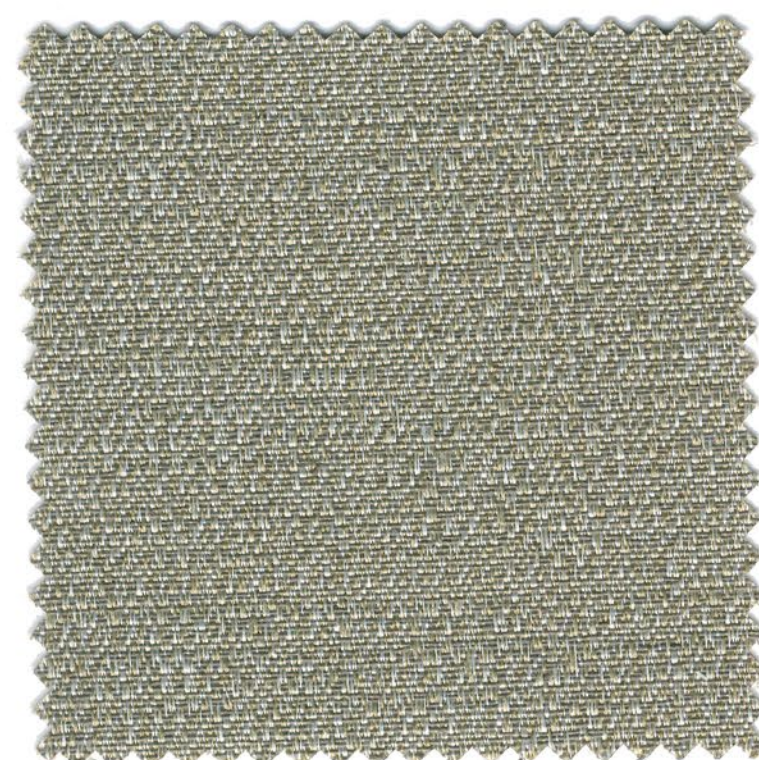
AILA C/70



IVAR C/70



BODIL C/70

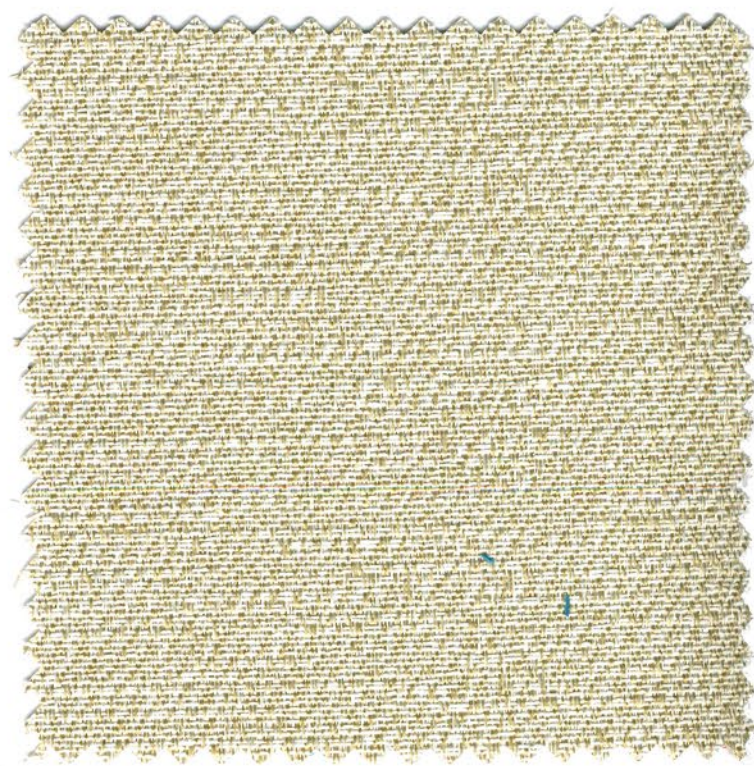


PORTLAND C/70

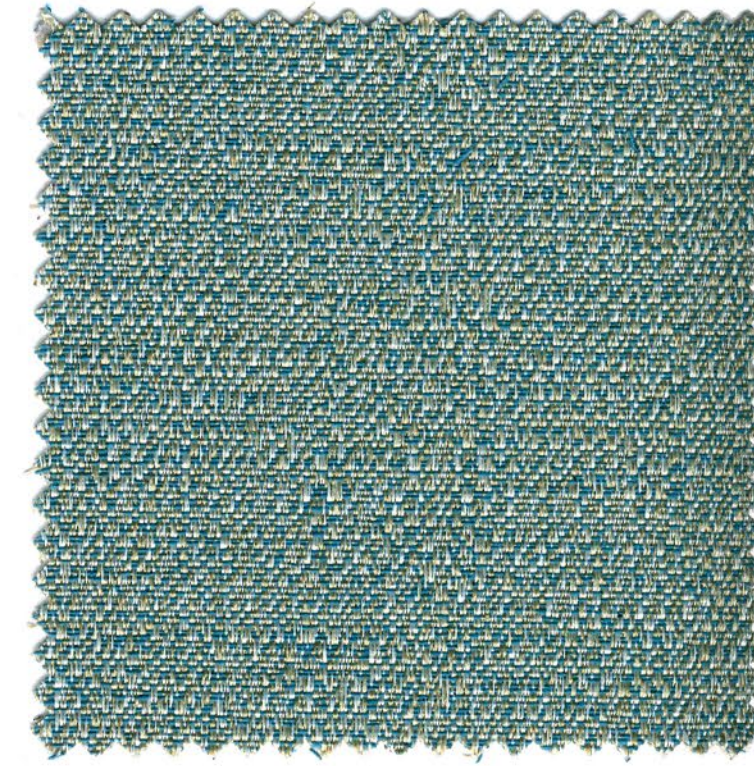


PORTLAND C/26





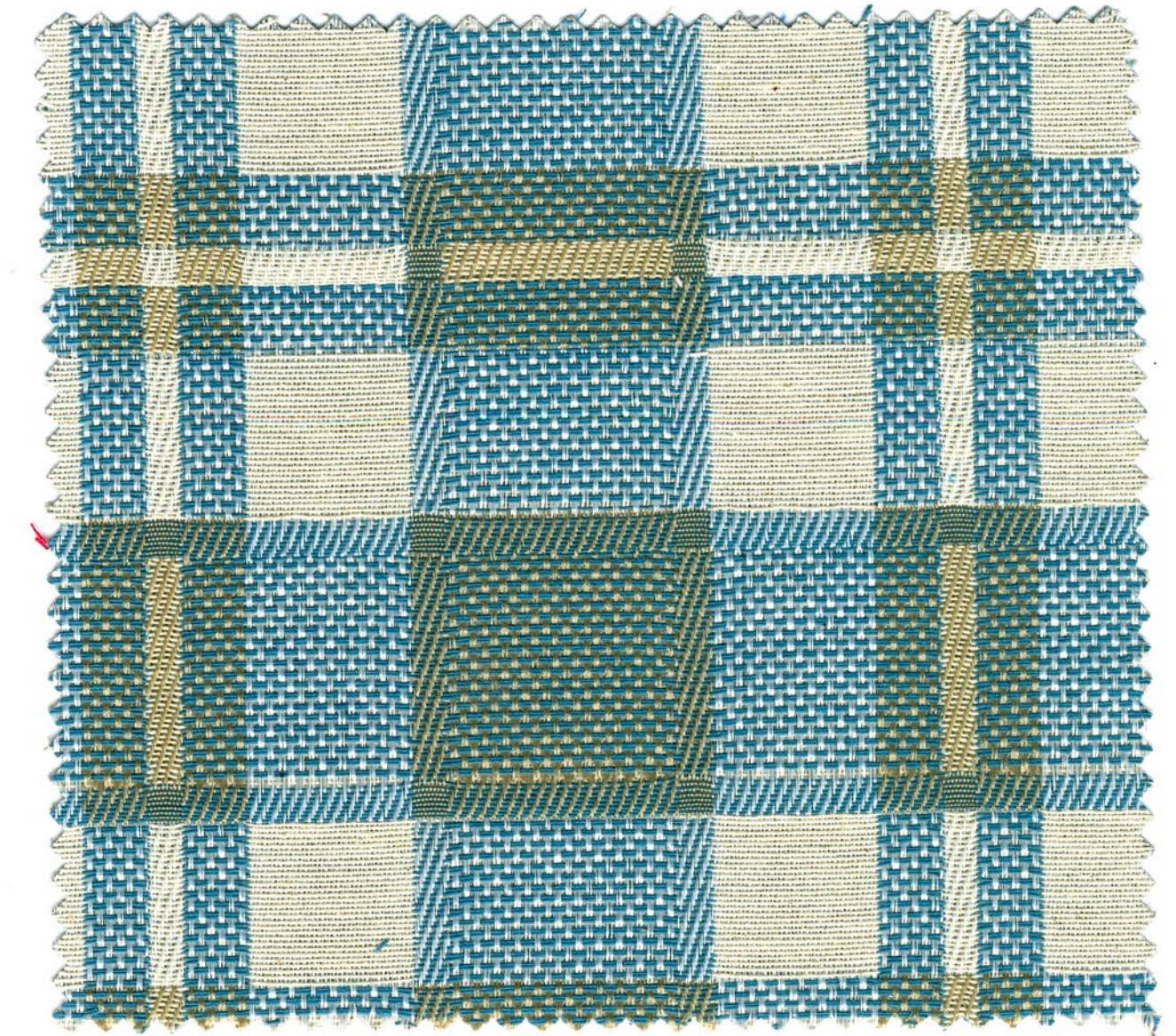
PORTLAND C/26



PORTLAND C/60



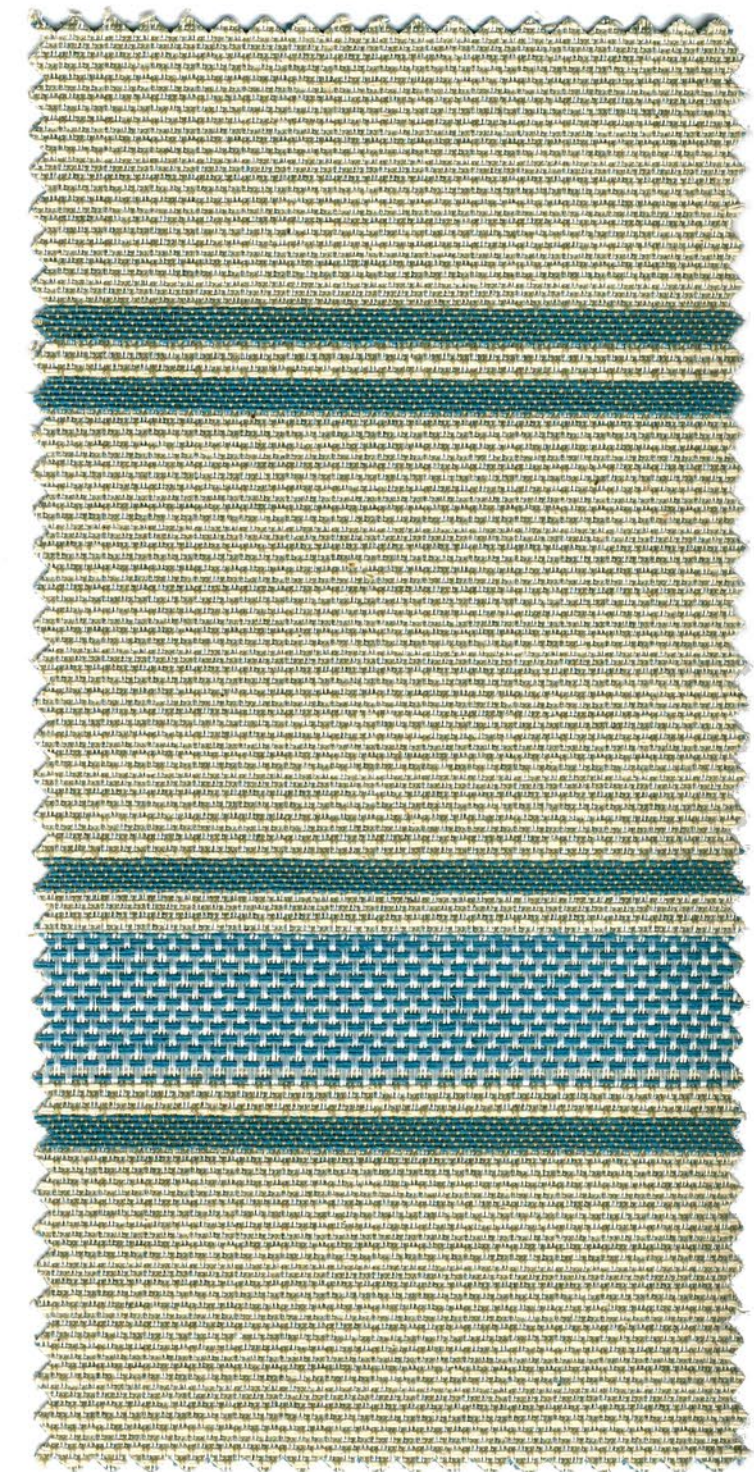
BODIL C/60



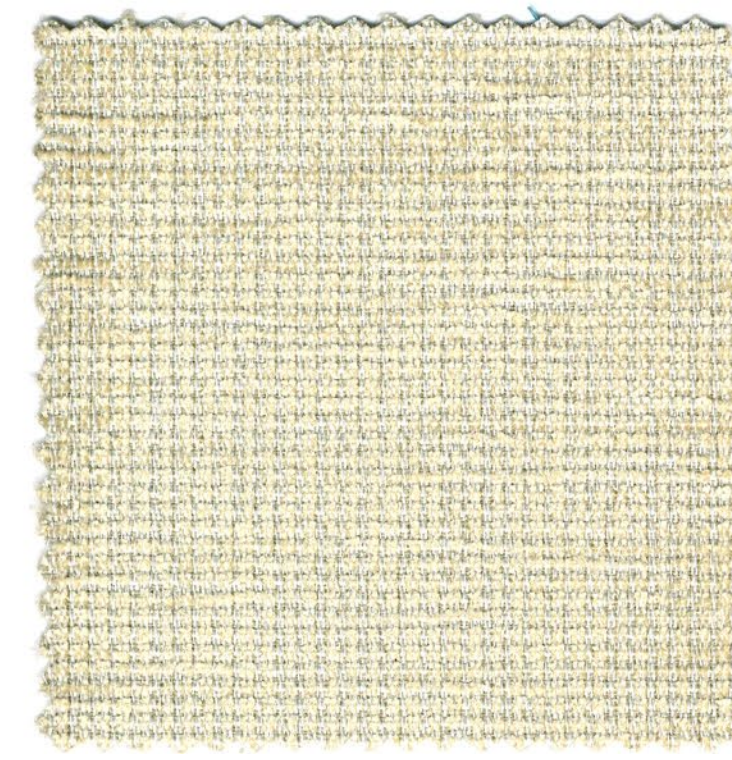
IVAR C/60



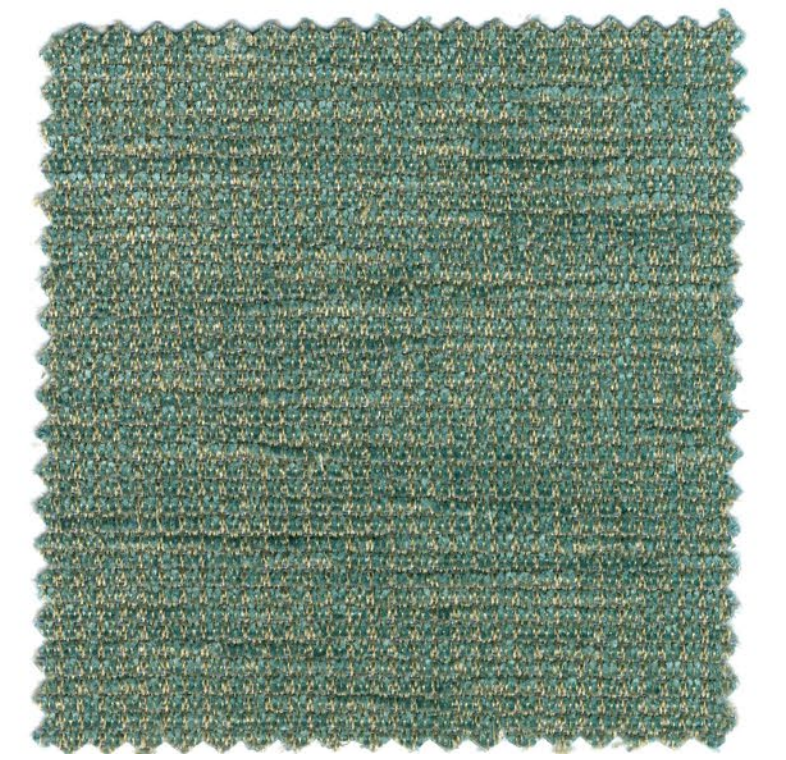
AILA C/60



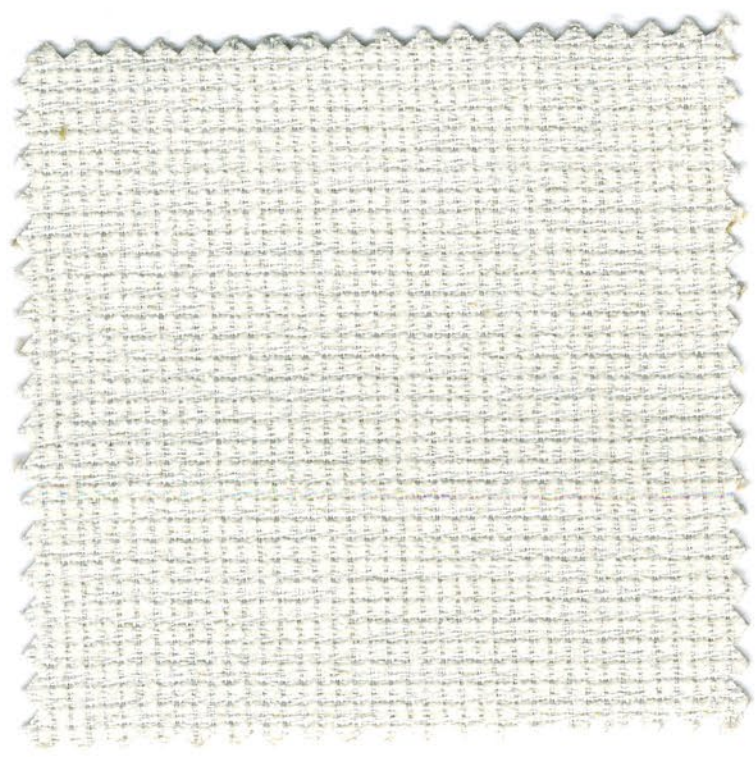
TIWAR C/60



PECLE C/22



PECLE C/60



PECLE C/26



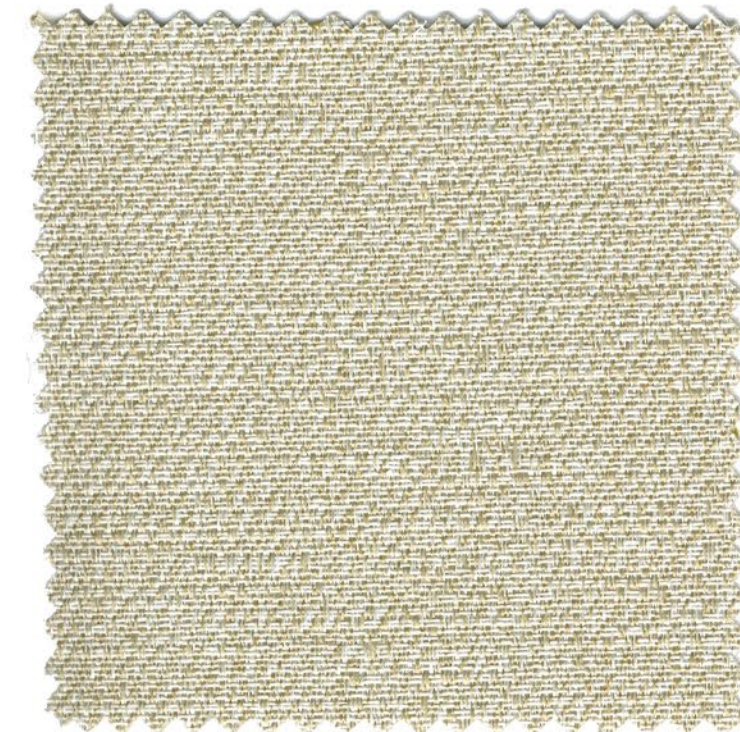
PECLE C/22



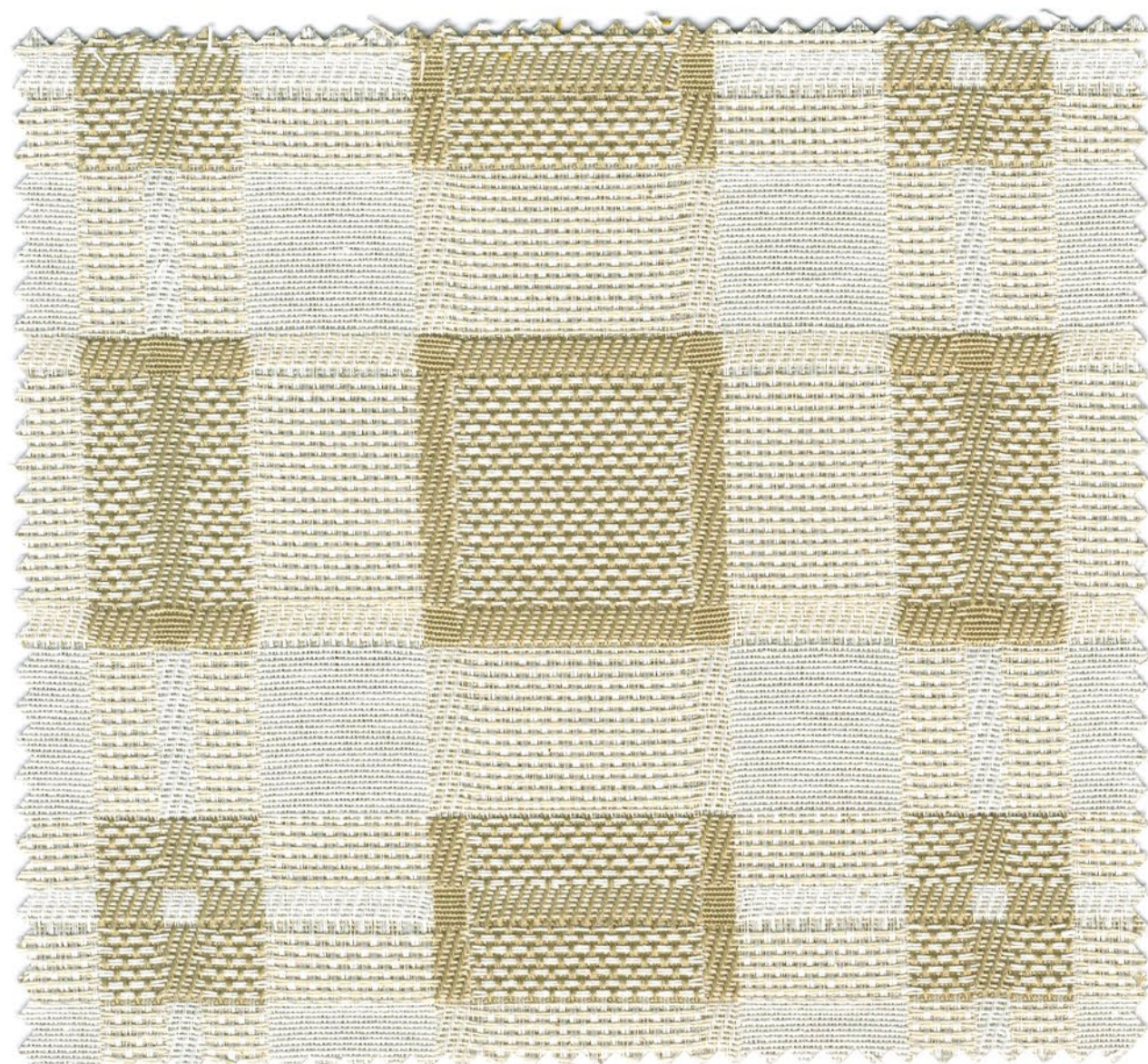
TIWAR C/26



AILA C/26



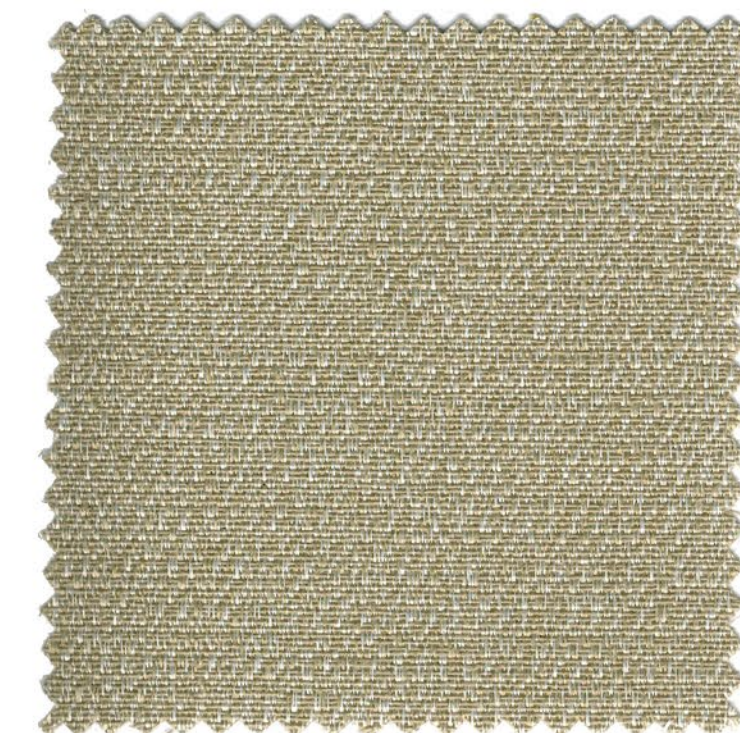
PORTLAND C/26



IVAR C/26

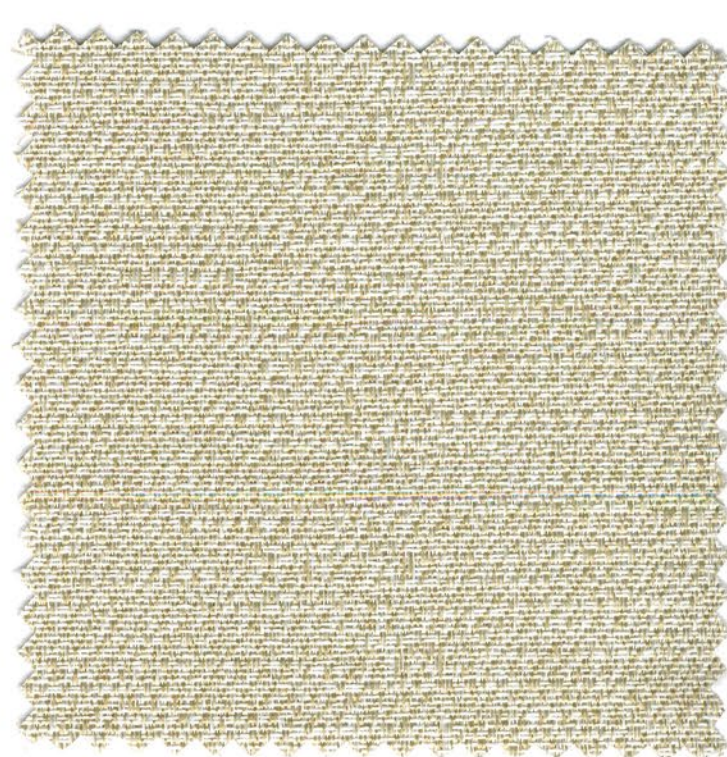


BODIL C/26

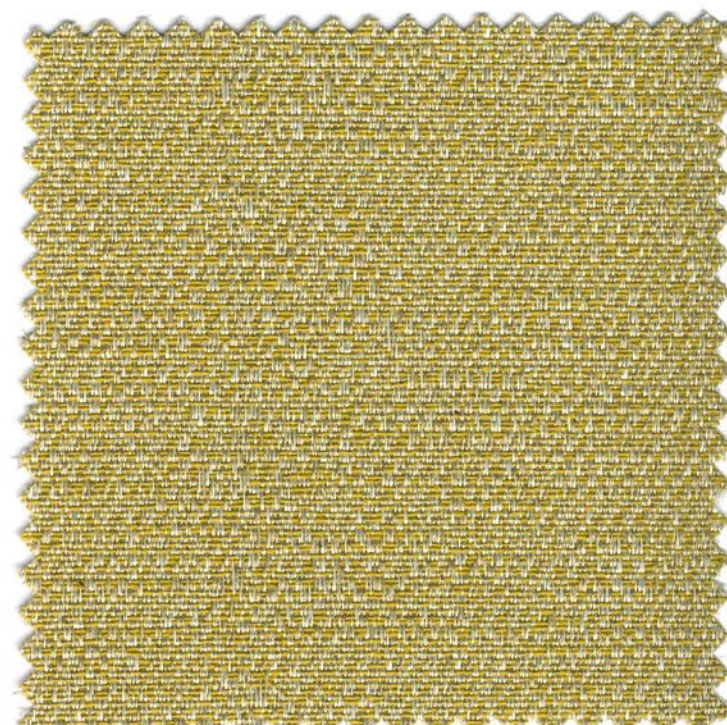


PORTLAND C/20





PORTLAND C/26



PORTLAND C/50



TIWAR C/50



BODIL C/50



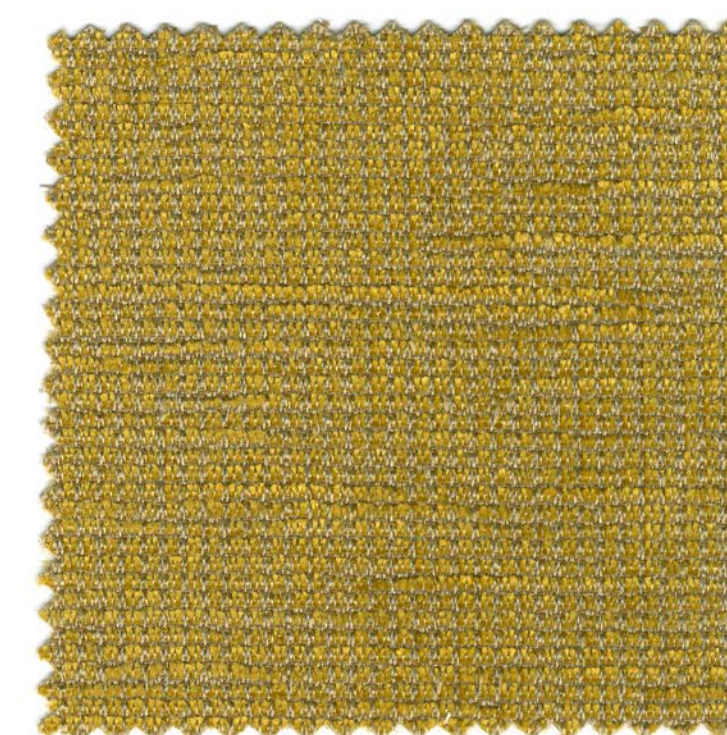
IVAR C/50



AILA C/50



PECLE C/22



PECLE C/50



PECLE C/10



PECLE C/20



TIWAR C/10



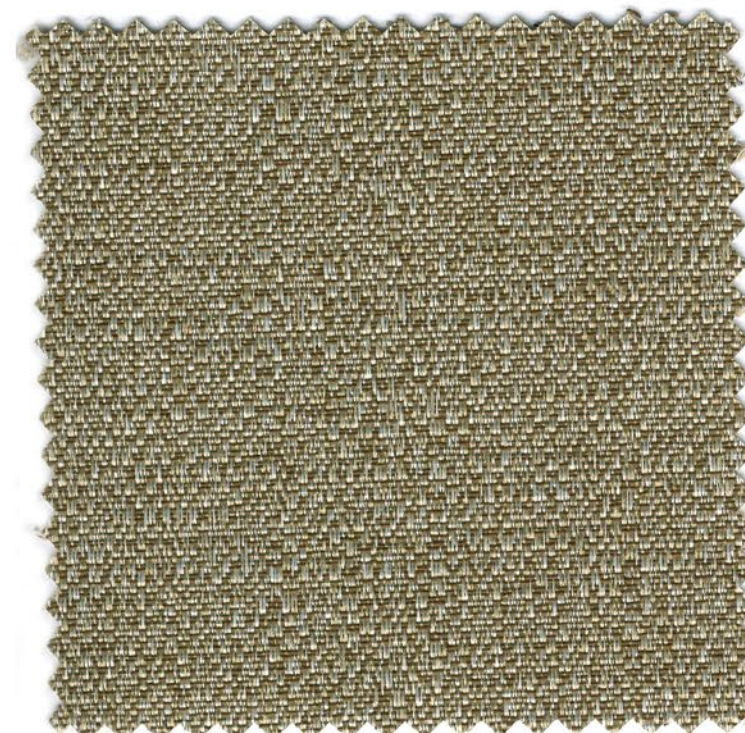
AILA C/10



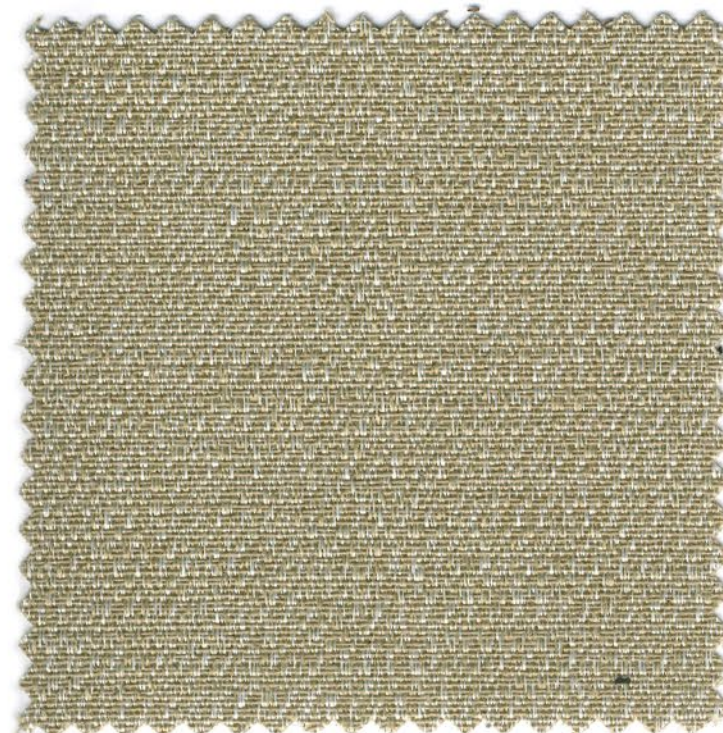
IVAR C/10



BODIL C/10



PORTLAND C/10

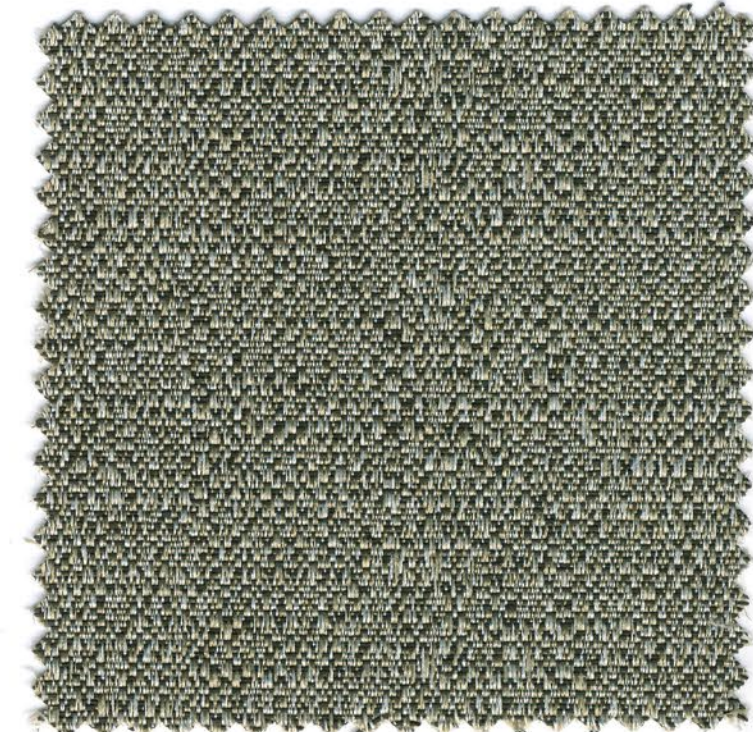


PORTLAND C/20





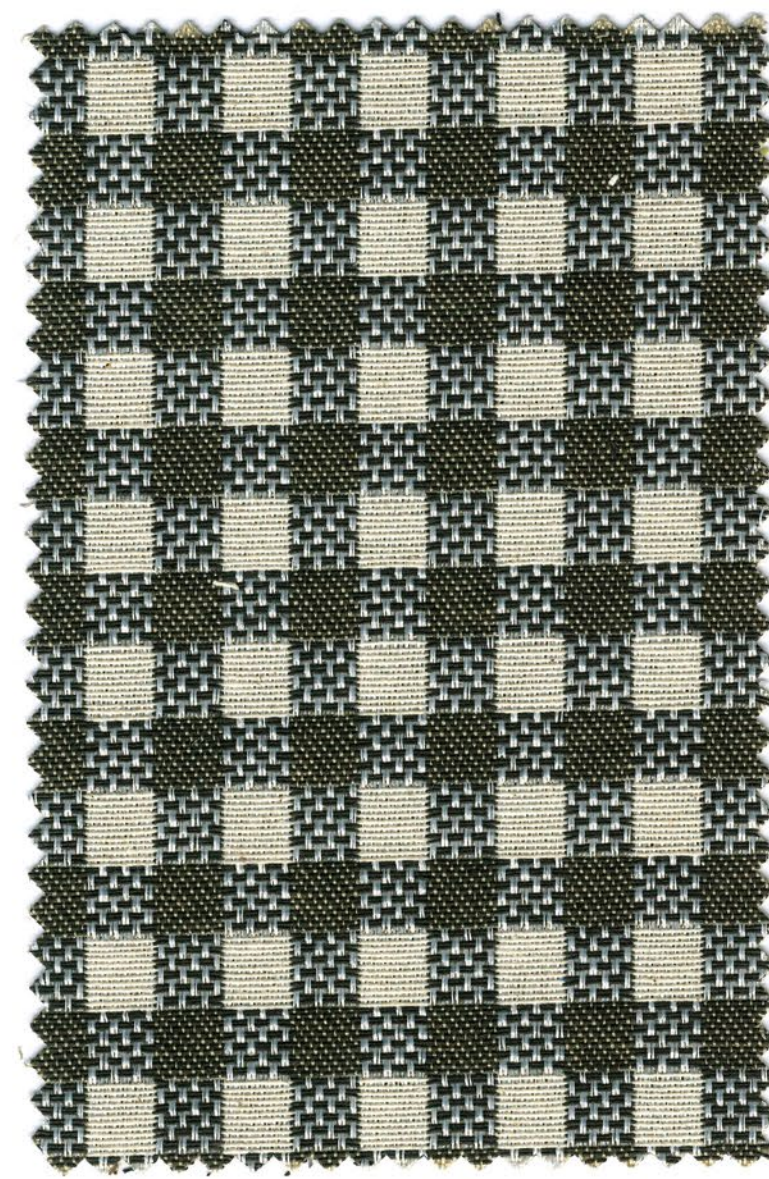
PORTLAND C/70



PORTLAND C/72



TIWAR C/72



BODIL C/72



IVAR C/72



AILA C/72

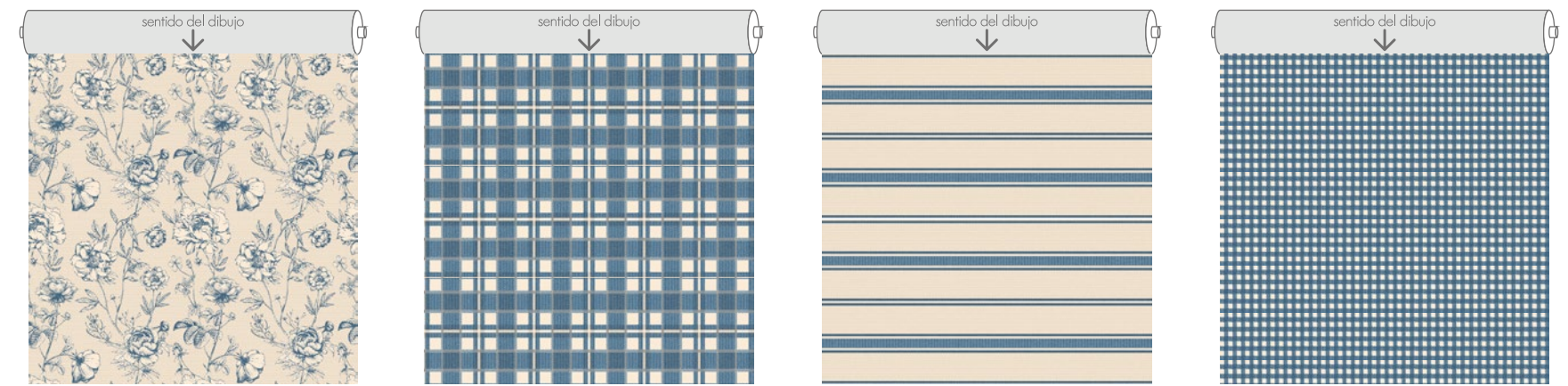


PECLE C/70



PECLE C/72

Litography Collection



AILA. Rapport 35x36,6 cm

IVAR. Rapport 11,7x12,5 cm

TIWAR. Rapport 17 cm

BODIL. Rapport 2x2 cm

CARACTERÍSTICAS TÉCNICAS TECHNICAL CHARACTERISTICS CARACTÉRISTIQUES TECHNIQUES

NOMBRE NAME NOM	COMPOSICIÓN COMPOSITION COMPOSITION	ANCHO (cm) WIDTH (cm) LARGEUR (cm)	GRAMAJE (g/m ²) WEIGHT (g/m ²) GRAMMAGE (g/m ²)	ABRASIÓN (ciclos) ABRASION TEST (cycles) TEST D'ABRASION (cycles)	PILLING PILLING PILLING	COSTURAS (u/t) SEAM STRENGTH (warp/weft) RES. DES COUITURES (c/t)
AILA	41%PES-59%CO	140	330	22.000	4	4,6/4,6
IVAR	41%PES-59%CO	140	330	22.000	4	4,6/4,6
TIWAR	41%PES-59%CO	140	330	22.000	4	4,6/4,6
BODIL	41%PES-59%CO	140	330	22.000	4	4,6/4,6
PORTLAND	41%PES-59%CO	140	330	28.000	4-5	5,5/5,8
PECLE	39%PAN-61%PES	140	300	30.000	5	4,5/4

LOS TESTS SE HAN REALIZADO BASÁNDOSE EN DIFERENTES MUESTRAS DE TEJIDO, POR TANTO SON VALORES MEDIOS E INDICATIVOS.
TESTS HAVE BEEN DONE ON DIFFERENT SAMPLES, THEREFORE THEY SHOULD BE CONSIDERED AS MERELY GUIDELINES.
LES TESTS ONT ÉTÉ RÉALISÉS EN SE BASANT SUR DIFFÉRENTS ÉCHANTILLONS DE TISSU, POUR CELA CE SONT DES VALEURS MOYENNES ET INDICATIVES.

ABRASION TEST: UNE-EN ISO 12947-2 PILLING: UNE-EN ISO 12945-2 SEAM STRENGTH: UNE-EN ISO 13936-2

TODOS LOS TEJIDOS SON LAVABLES EN LAVADORA ALL THESE FABRICS ARE MACHINE WASHABLE TOUS LES TISSUS SONT LAVABLES EN MACHINE



Lavado doméstico con jabones neutros a 30°C*
Domestic wash, with neutral soaps and water about 30°C*
Lavage domestique avec des savons neutres à 30°C*



Admite lavado en seco con percloroetileno
Dry cleaning only with perchloroethylene
Lavage à sec avec perchloréthylène seulement



No usar lejía
Don't use bleach
Ne pas utiliser de javel



Planchado al revés a 110°C
Iron by the back side at 110°C
Repassage à l'envers à 110°C



No usar secadora
Do not tumble dry
Ne pas utiliser de Sèche-Linge

*Para la óptima conservación del tejido, aconsejamos su lavado en un establecimiento especializado.

*For the best maintenance of the fabric, we recommend to use dry cleaning.

*Pour une conservation optimale du tissu, nous vous conseillons un lavage dans un établissement spécialisé.



Piel SA, founded in 1976, is a textile company with 70.000m² production area, certified by SGS for the Quality and Customer Satisfaction Standard ISO 9001:2015.

PRODUCTO FABRICADO EN ESPAÑA PRODUCT MADE IN SPAIN PRODUIT FABRIQUÉ EN ESPAGNE



PIEL, S.A. - Avda. Del Cordell de Murcia, 6 - 46890 AGULLENT - SPAIN

+34 962 907 400
www.pielsa.es

Litography Collection